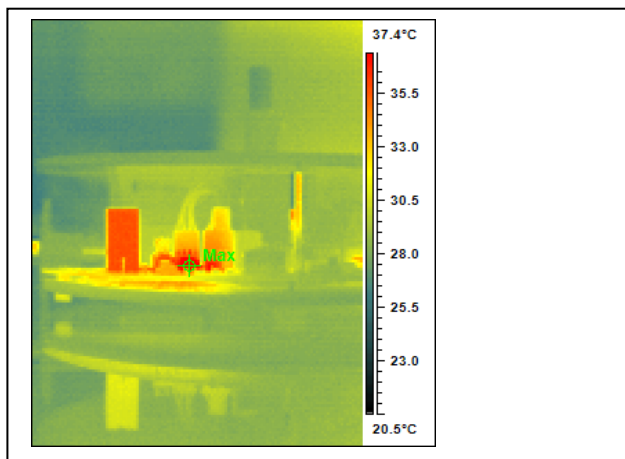
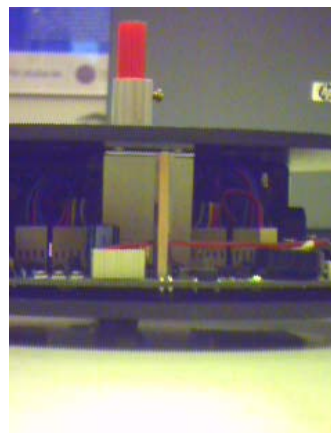


### (Stuba Report Elosys 2007)



Infrared Image



Visual Image

#### Information:

FileName	IMAGE010.IRI
CreateTime	Monday, October 15, 2007 5:33:42 AM
Emissivity	0.98
Background Temp	24.3°C
Distance	1.8m
Max Temp	42.1°C
Min Temp	25.6°C
Voice Comment	

#### Analyses Table:

Object Parameter	Value
Max	42.1°C

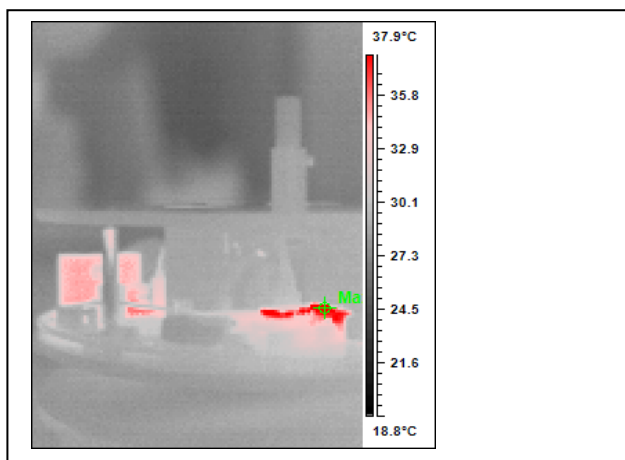
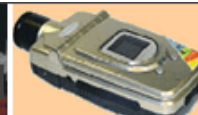
#### Notations:

<<NLT>>	<<NTV>>
---------	---------

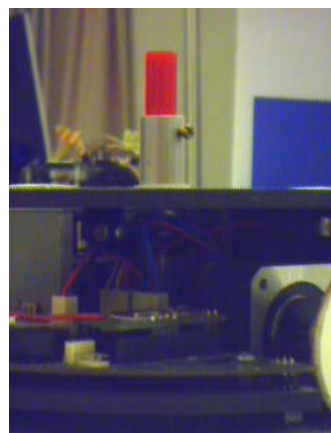
#### Fault Rating:

LOW	MODERATE	HIGH	EXTREME
-----	----------	------	---------

#### Comments:



Infrared Image



Visual Image

**Information:**

FileName	IMAGE011.IRI
CreateTime	Monday, October 15, 2007 5:34:40 AM
Emissivity	0.98
Background Temp	24.3°C
Distance	1.8m
Max Temp	50.3°C
Min Temp	23.6°C
Voice Comment	

**Analyses Table:**

Object Parameter	Value
Max	50.3°C

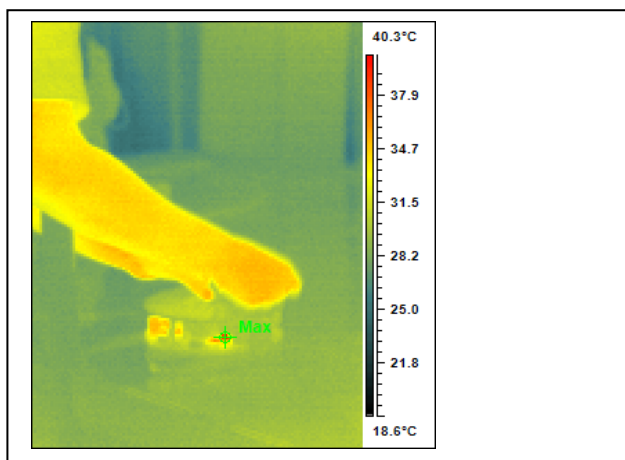
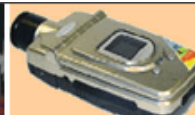
**Notations:**

<<NTL>>	<<NTV>>
---------	---------

**Fault Rating:**

LOW	MODERATE	HIGH	EXTREME
-----	----------	------	---------

**Comments:**



Infrared Image



Visual Image

### Information:

FileName	IMAGE012.IRI
CreateTime	Monday, October 15, 2007 5:35:08 AM
Emissivity	0.98
Background Temp	24.3°C
Distance	1.8m
Max Temp	40.4°C
Min Temp	23.7°C
Voice Comment	

### Analyses Table:

Object Parameter	Value
Max	40.4°C

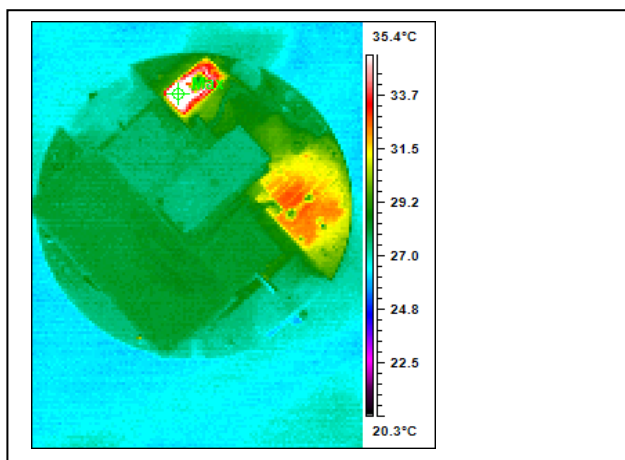
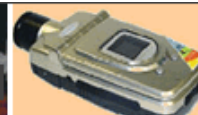
### Notations:

<<NTL>>	<<NTV>>
---------	---------

### Fault Rating:

LOW	MODERATE	HIGH	EXTREME
-----	----------	------	---------

### Comments:



Infrared Image



Visual Image

**Information:**

FileName	IMAGE013.IRI
CreateTime	Monday, October 15, 2007 5:35:42 AM
Emissivity	0.98
Background Temp	24.3°C
Distance	1.8m
Max Temp	55.7°C
Min Temp	25.6°C
Voice Comment	

**Analyses Table:**

Object Parameter	Value
Max	55.7°C

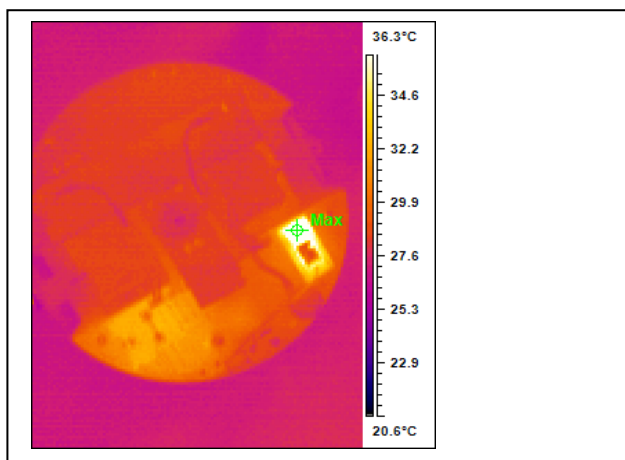
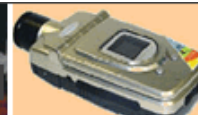
**Notations:**

<<NTL>>	<<NTV>>
---------	---------

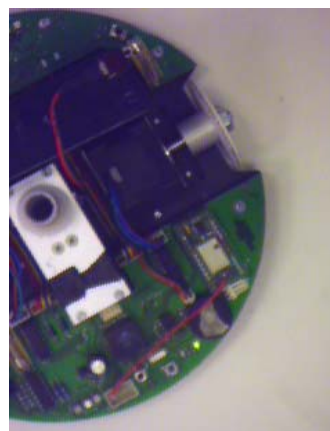
**Fault Rating:**

LOW	MODERATE	HIGH	EXTREME
-----	----------	------	---------

**Comments:**



Infrared Image



Visual Image

**Information:**

FileName	IMAGE014.IRI
CreateTime	Monday, October 15, 2007 5:36:15 AM
Emissivity	0.98
Background Temp	24.4°C
Distance	1.8m
Max Temp	55.4°C
Min Temp	24.5°C
Voice Comment	

**Analyses Table:**

Object Parameter	Value
Max	55.4°C

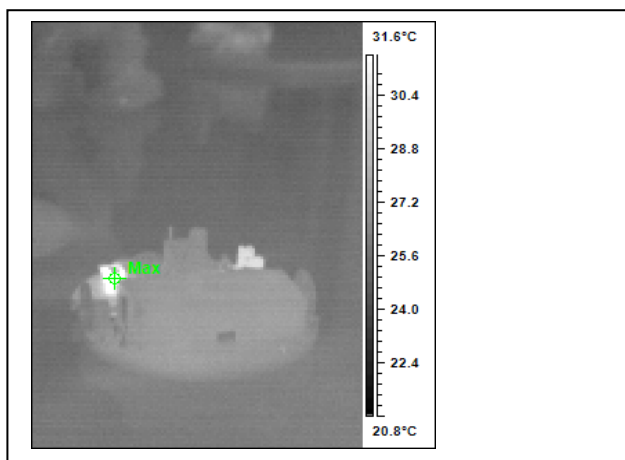
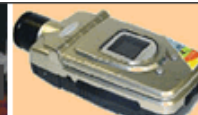
**Notations:**

<<NTL>>	<<NTV>>
---------	---------

**Fault Rating:**

LOW	MODERATE	HIGH	EXTREME
-----	----------	------	---------

**Comments:**



Infrared Image



Visual Image

### Information:

FileName	IMAGE015.IRI
CreateTime	Monday, October 15, 2007 5:37:16 AM
Emissivity	0.98
Background Temp	24.5°C
Distance	1.8m
Max Temp	50.7°C
Min Temp	24.1°C
Voice Comment	

### Analyses Table:

Object Parameter	Value
Max	50.7°C

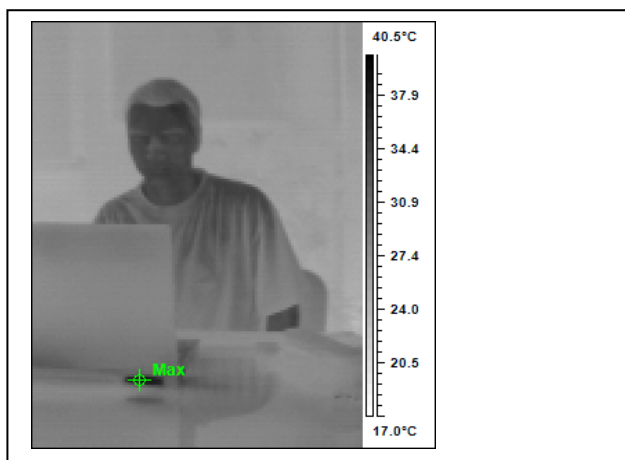
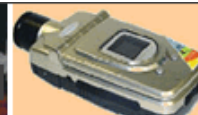
### Notations:

<<NTL>>	<<NTV>>
---------	---------

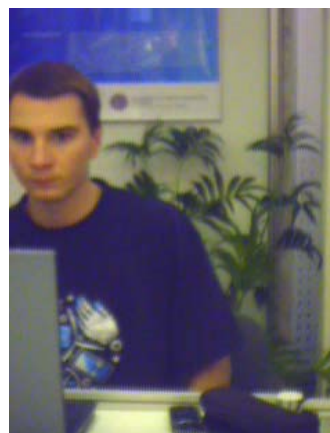
### Fault Rating:

LOW	MODERATE	HIGH	EXTREME
-----	----------	------	---------

### Comments:



Infrared Image



Visual Image

### Information:

FileName	IMAGE016.IRI
CreateTime	Monday, October 15, 2007 5:37:47 AM
Emissivity	0.98
Background Temp	24.5°C
Distance	1.8m
Max Temp	41.2°C
Min Temp	22.2°C
Voice Comment	

### Analyses Table:

Object Parameter	Value
Max	41.2°C

### Notations:

<<NTL>>	<<NTV>>
---------	---------

### Fault Rating:

LOW	MODERATE	HIGH	EXTREME
-----	----------	------	---------

### Comments: