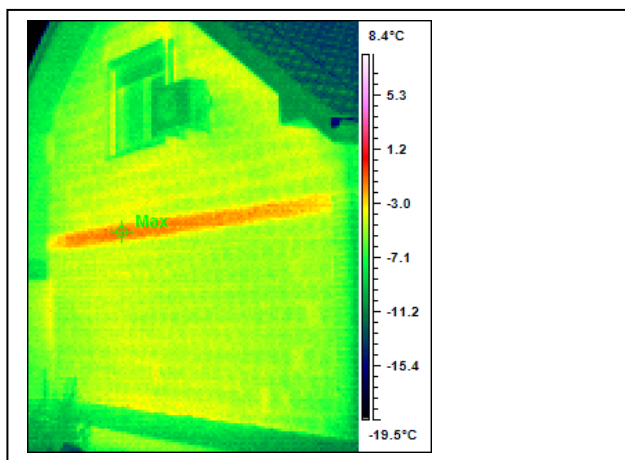
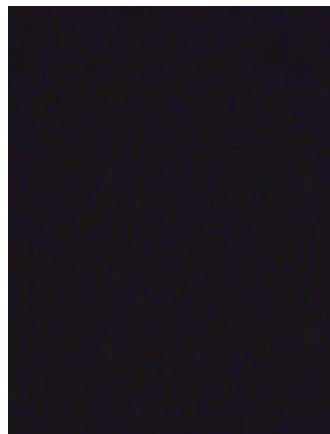


### (GK HOUSE)



Infrared Image



Visual Image

#### Information:

FileName	IMAGE021.IRI
CreateTime	Monday, October 15, 2007 8:02:18 AM
Emissivity	0.98
Background Temp	9.3°C
Distance	1.8m
Max Temp	2.3°C
Min Temp	-26.7°C
Voice Comment	

#### Analyses Table:

Object Parameter	Value
Max	2.3°C

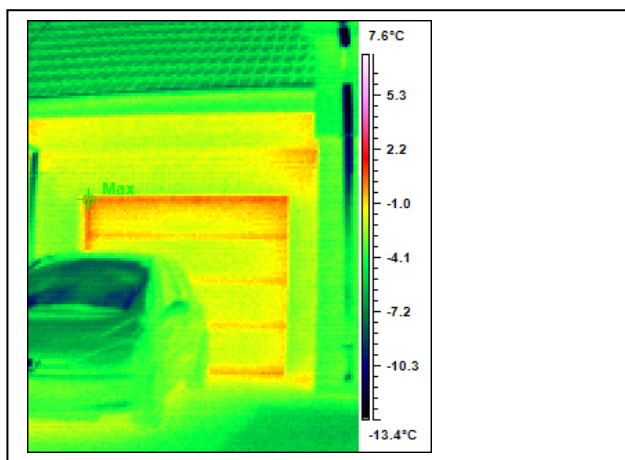
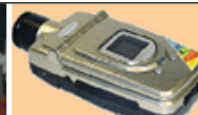
#### Notations:

<<NTL>>	<<NTV>>
---------	---------

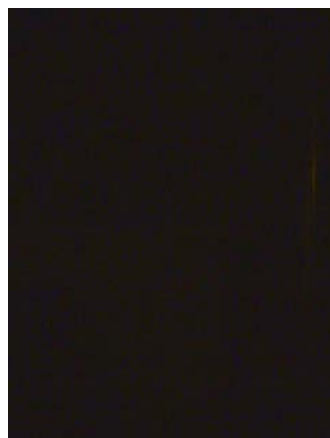
#### Fault Rating:

LOW	MODERATE	HIGH	EXTREME
-----	----------	------	---------

#### Comments:



Infrared Image



Visual Image

**Information:**

FileName	IMAGE017.IRI
CreateTime	Monday, October 15, 2007 7:56:44 AM
Emissivity	0.98
Background Temp	15.1°C
Distance	1.8m
Max Temp	3.3°C
Min Temp	-20.4°C
Voice Comment	

**Analyses Table:**

Object Parameter	Value
Max	3.3°C

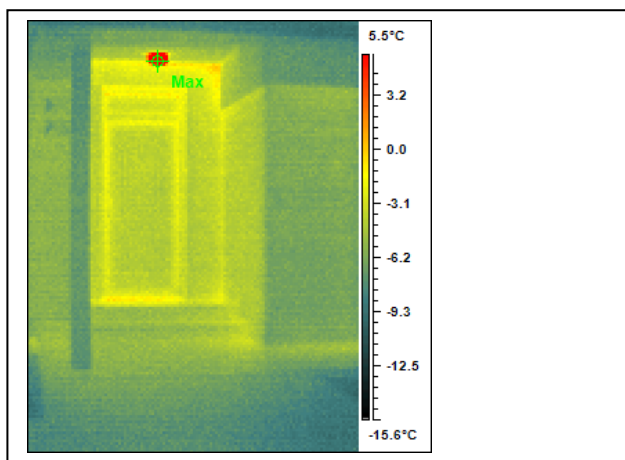
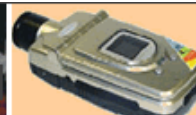
**Notations:**

<<NLT>>	<<NTV>>
---------	---------

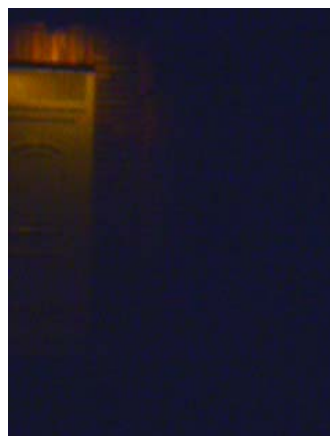
**Fault Rating:**

LOW	MODERATE	HIGH	EXTREME
-----	----------	------	---------

**Comments:**



Infrared Image



Visual Image

### Information:

FileName	IMAGE018.IRI
CreateTime	Monday, October 15, 2007 7:59:03 AM
Emissivity	0.98
Background Temp	11.6°C
Distance	1.8m
Max Temp	23.6°C
Min Temp	-10.7°C
Voice Comment	

### Analyses Table:

Object Parameter	Value
Max	23.6°C

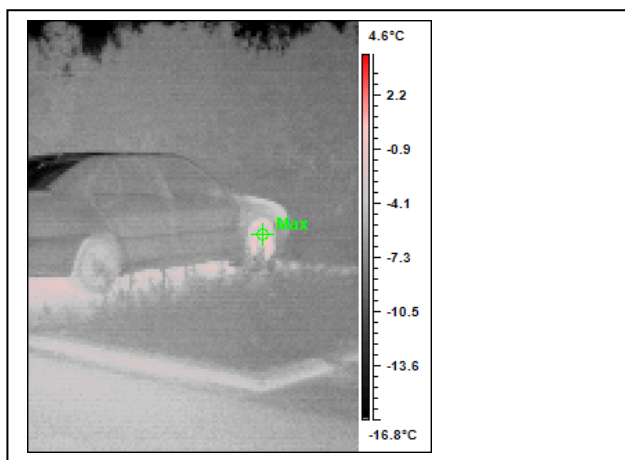
### Notations:

<<NTL>>	<<NTV>>
---------	---------

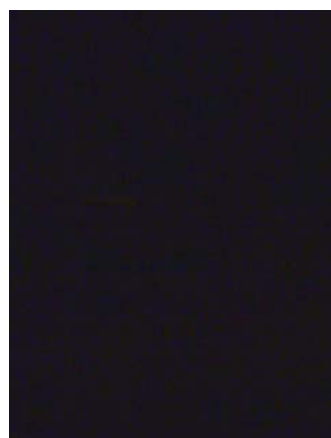
### Fault Rating:

LOW	MODERATE	HIGH	EXTREME
-----	----------	------	---------

### Comments:



Infrared Image



Visual Image

**Information:**

FileName	IMAGE019.IRI
CreateTime	Monday, October 15, 2007 8:00:58 AM
Emissivity	0.98
Background Temp	10.0°C
Distance	1.8m
Max Temp	2.8°C
Min Temp	-29.5°C
Voice Comment	

**Analyses Table:**

Object Parameter	Value
Max	2.8°C

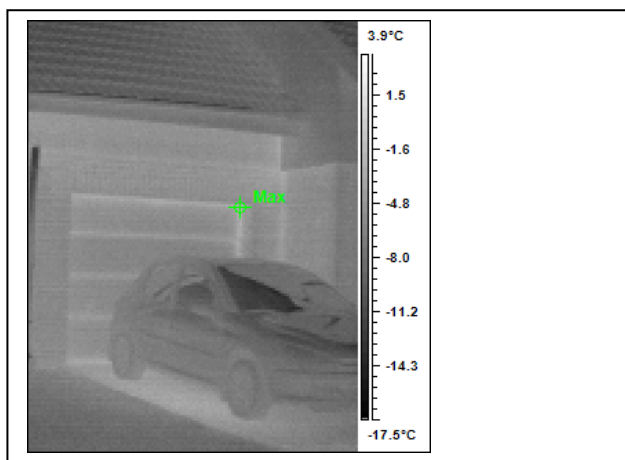
**Notations:**

<<NLT>>	<<NTV>>
---------	---------

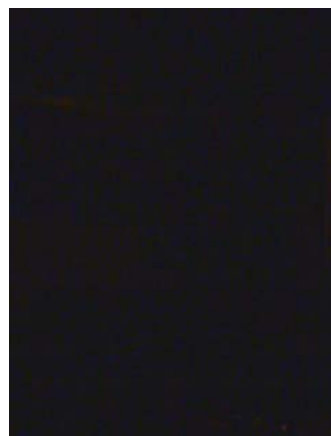
**Fault Rating:**

LOW	MODERATE	HIGH	EXTREME
-----	----------	------	---------

**Comments:**



Infrared Image



Visual Image

**Information:**

FileName	IMAGE020.IRI
CreateTime	Monday, October 15, 2007 8:01:28 AM
Emissivity	0.98
Background Temp	9.7°C
Distance	1.8m
Max Temp	-0.2°C
Min Temp	-16.6°C
Voice Comment	

**Analyses Table:**

Object Parameter	Value
Max	-0.2°C

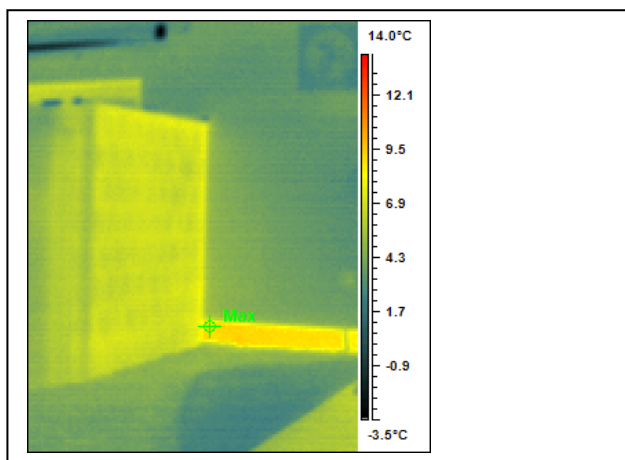
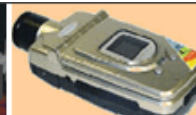
**Notations:**

<<NTL>>	<<NTV>>
---------	---------

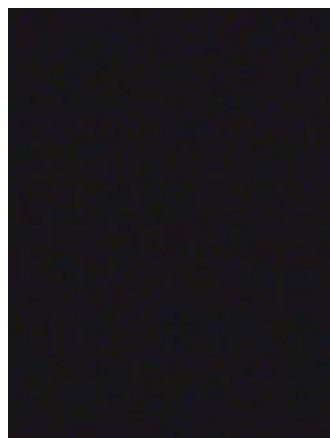
**Fault Rating:**

LOW	MODERATE	HIGH	EXTREME
-----	----------	------	---------

**Comments:**



Infrared Image



Visual Image

### Information:

FileName	IMAGE028.IRI
CreateTime	Monday, October 15, 2007 8:23:26 AM
Emissivity	0.98
Background Temp	10.8°C
Distance	1.8m
Max Temp	11.4°C
Min Temp	-6.9°C
Voice Comment	

### Analyses Table:

Object Parameter	Value
Max	11.4°C

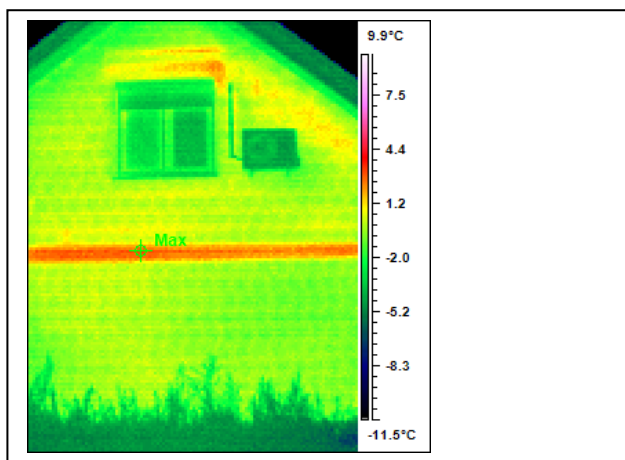
### Notations:

<<NTL>>	<<NTV>>
---------	---------

### Fault Rating:

LOW	MODERATE	HIGH	EXTREME
-----	----------	------	---------

### Comments:



Infrared Image



Visual Image

### Information:

FileName	IMAGE022.IRI
CreateTime	Monday, October 15, 2007 8:03:53 AM
Emissivity	0.98
Background Temp	8.7°C
Distance	1.8m
Max Temp	5.6°C
Min Temp	-27.9°C
Voice Comment	

### Analyses Table:

Object Parameter	Value
Max	5.6°C

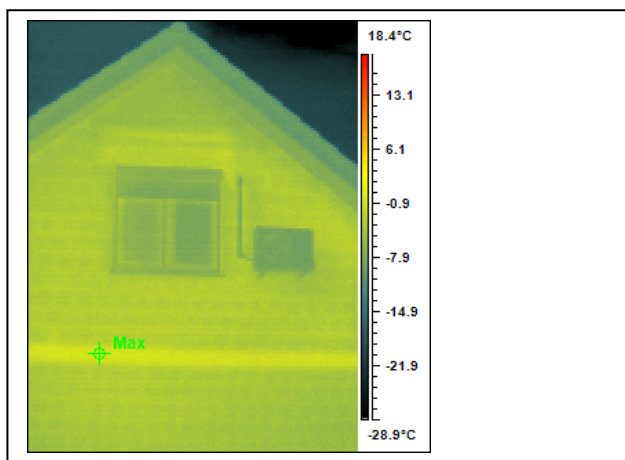
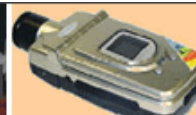
### Notations:

<<NTL>>	<<NTV>>
---------	---------

### Fault Rating:

LOW	MODERATE	HIGH	EXTREME
-----	----------	------	---------

### Comments:



Infrared Image



Visual Image

### Information:

FileName	IMAGE023.IRI
CreateTime	Monday, October 15, 2007 8:04:49 AM
Emissivity	0.98
Background Temp	8.4°C
Distance	1.8m
Max Temp	4.6°C
Min Temp	-29.1°C
Voice Comment	

### Analyses Table:

Object Parameter	Value
Max	4.6°C

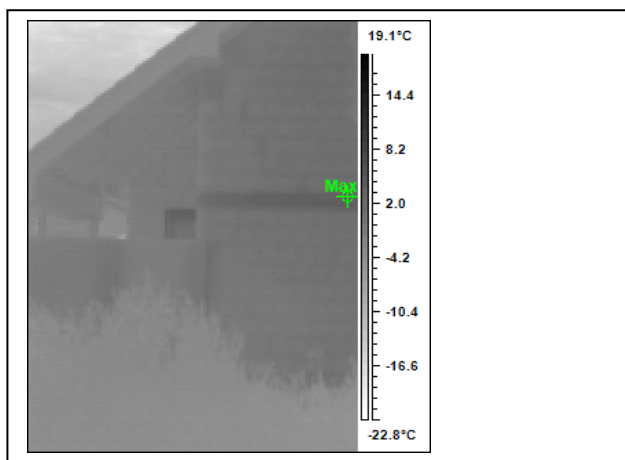
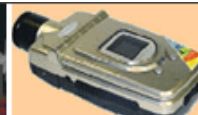
### Notations:

<<NTL>>	<<NTV>>
---------	---------

### Fault Rating:

LOW	MODERATE	HIGH	EXTREME
-----	----------	------	---------

### Comments:



Infrared Image



Visual Image

**Information:**

FileName	IMAGE024.IRI
CreateTime	Monday, October 15, 2007 8:06:17 AM
Emissivity	0.98
Background Temp	8.0°C
Distance	1.8m
Max Temp	8.2°C
Min Temp	-24.5°C
Voice Comment	

**Analyses Table:**

Object Parameter	Value
Max	8.2°C

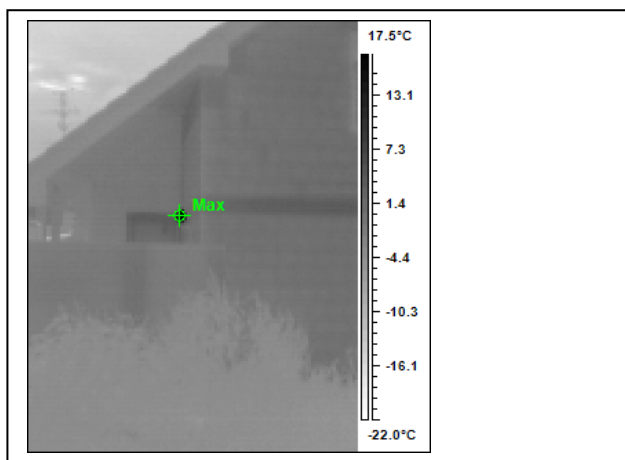
**Notations:**

<<NTL>>	<<NTV>>
---------	---------

**Fault Rating:**

LOW	MODERATE	HIGH	EXTREME
-----	----------	------	---------

**Comments:**



Infrared Image



Visual Image

**Information:**

FileName	IMAGE025.IRI
CreateTime	Monday, October 15, 2007 8:07:25 AM
Emissivity	0.98
Background Temp	7.8°C
Distance	1.8m
Max Temp	31.5°C
Min Temp	-27.7°C
Voice Comment	

**Analyses Table:**

Object Parameter	Value
Max	31.5°C

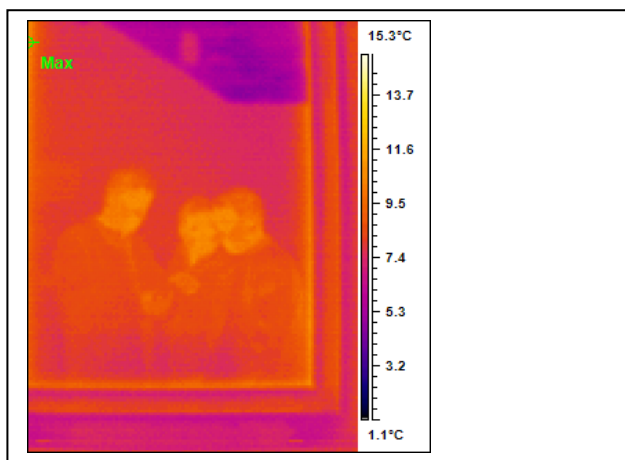
**Notations:**

<<NTL>>	<<NTV>>
---------	---------

**Fault Rating:**

LOW	MODERATE	HIGH	EXTREME
-----	----------	------	---------

**Comments:**



Infrared Image



Visual Image

### Information:

FileName	IMAGE026.IRI
CreateTime	Monday, October 15, 2007 8:21:43 AM
Emissivity	0.98
Background Temp	12.5°C
Distance	1.8m
Max Temp	12.1°C
Min Temp	3.7°C
Voice Comment	

### Analyses Table:

Object Parameter	Value
Max	12.1°C

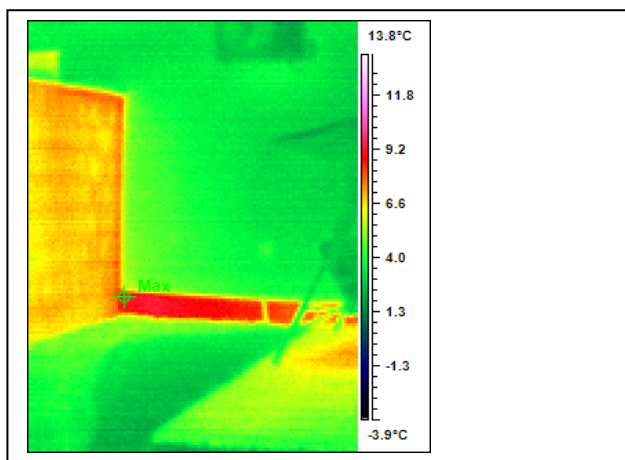
### Notations:

<<NTL>>	<<NTV>>
---------	---------

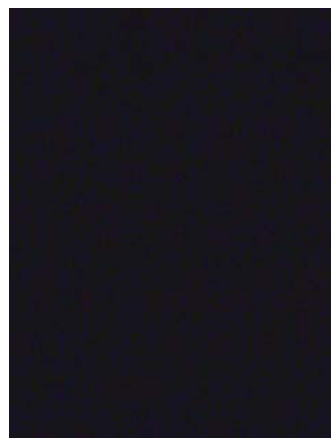
### Fault Rating:

LOW	MODERATE	HIGH	EXTREME
-----	----------	------	---------

### Comments:



Infrared Image



Visual Image

### Information:

FileName	IMAGE027.IRI
CreateTime	Monday, October 15, 2007 8:23:13 AM
Emissivity	0.98
Background Temp	11.0°C
Distance	1.8m
Max Temp	11.7°C
Min Temp	1.1°C
Voice Comment	

### Analyses Table:

Object Parameter	Value
Max	11.7°C

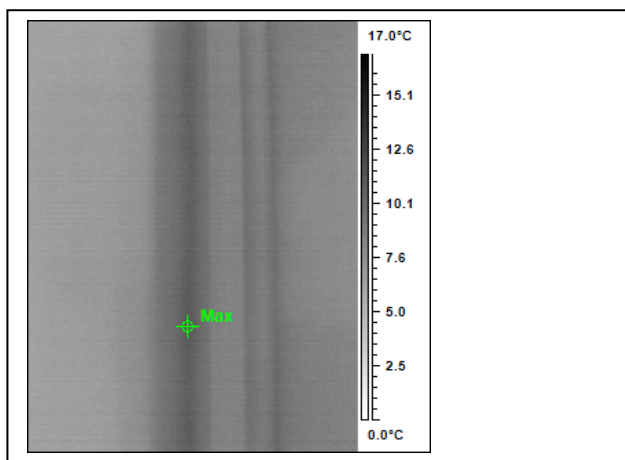
### Notations:

<<NTL>>	<<NTV>>
---------	---------

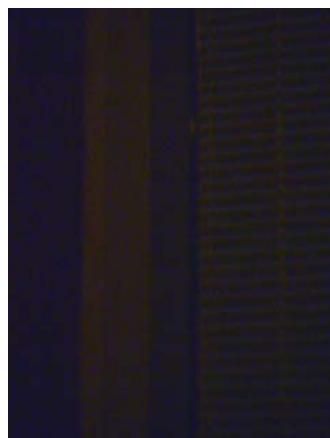
### Fault Rating:

LOW	MODERATE	HIGH	EXTREME
-----	----------	------	---------

### Comments:



Infrared Image



Visual Image

**Information:**

FileName	IMAGE034.IRI
CreateTime	Monday, October 15, 2007 8:28:46 AM
Emissivity	0.98
Background Temp	8.6°C
Distance	1.8m
Max Temp	12.6°C
Min Temp	5.4°C
Voice Comment	

**Analyses Table:**

Object Parameter	Value
Max	12.6°C

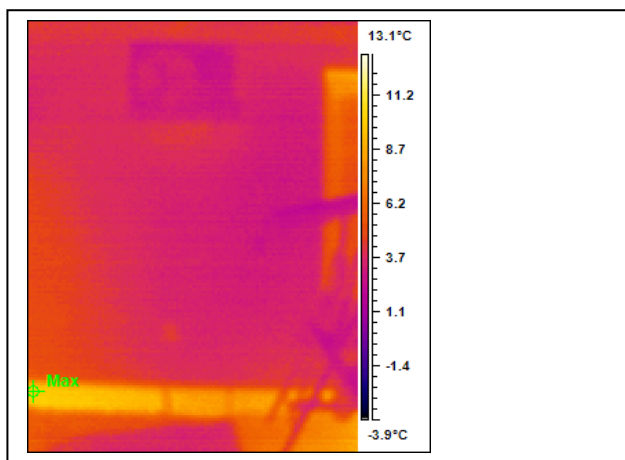
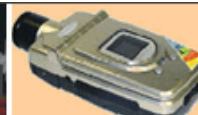
**Notations:**

<<NTL>>	<<NTV>>
---------	---------

**Fault Rating:**

LOW	MODERATE	HIGH	EXTREME
-----	----------	------	---------

**Comments:**



Infrared Image



Visual Image

**Information:**

FileName	IMAGE029.IRI
CreateTime	Monday, October 15, 2007 8:25:10 AM
Emissivity	0.98
Background Temp	9.6°C
Distance	1.8m
Max Temp	12.7°C
Min Temp	1.5°C
Voice Comment	

**Analyses Table:**

Object Parameter	Value
Max	12.7°C

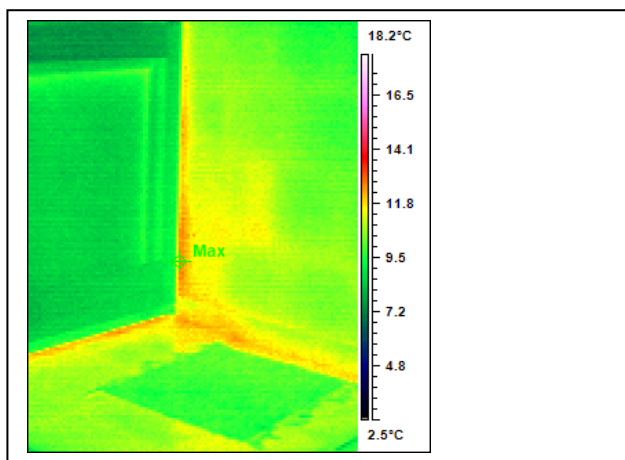
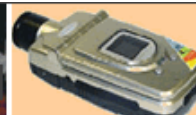
**Notations:**

<<NLT>>	<<NTV>>
---------	---------

**Fault Rating:**

<b>LOW</b>	<b>MODERATE</b>	<b>HIGH</b>	<b>EXTREME</b>
------------	-----------------	-------------	----------------

**Comments:**



Infrared Image



Visual Image

### Information:

FileName	IMAGE030.IRI
CreateTime	Monday, October 15, 2007 8:26:53 AM
Emissivity	0.98
Background Temp	8.8°C
Distance	1.8m
Max Temp	13.8°C
Min Temp	6.2°C
Voice Comment	

### Analyses Table:

Object Parameter	Value
Max	13.8°C

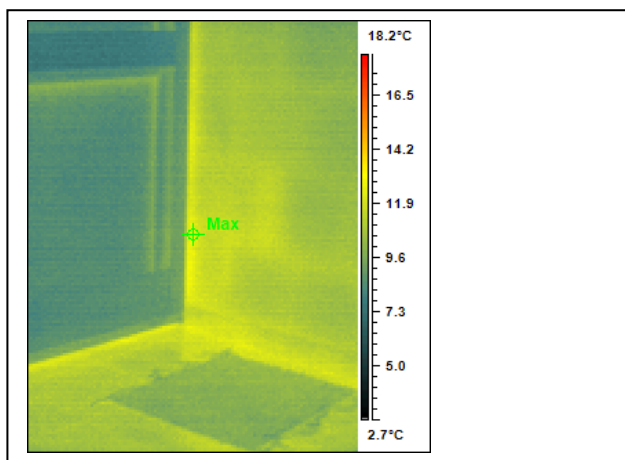
### Notations:

<<NTL>>	<<NTV>>
---------	---------

### Fault Rating:

LOW	MODERATE	HIGH	EXTREME
-----	----------	------	---------

### Comments:



Infrared Image



Visual Image

### Information:

FileName	IMAGE031.IRI
CreateTime	Monday, October 15, 2007 8:27:15 AM
Emissivity	0.98
Background Temp	8.8°C
Distance	1.8m
Max Temp	14.0°C
Min Temp	6.6°C
Voice Comment	

### Analyses Table:

Object Parameter	Value
Max	14.0°C

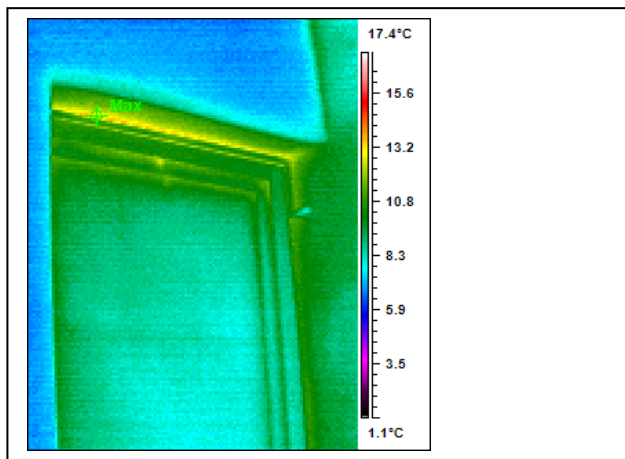
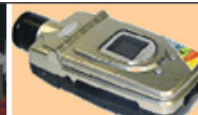
### Notations:

<<NTL>>	<<NTV>>
---------	---------

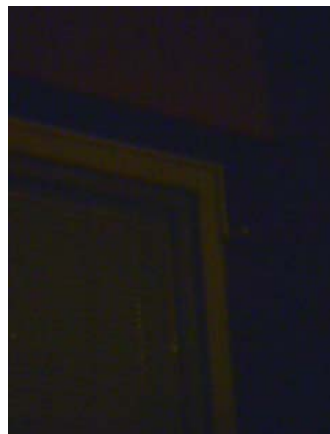
### Fault Rating:

LOW	MODERATE	HIGH	EXTREME
-----	----------	------	---------

### Comments:



Infrared Image



Visual Image

**Information:**

FileName	IMAGE032.IRI
CreateTime	Monday, October 15, 2007 8:27:31 AM
Emissivity	0.98
Background Temp	8.8°C
Distance	1.8m
Max Temp	15.5°C
Min Temp	5.6°C
Voice Comment	

**Analyses Table:**

Object Parameter	Value
Max	15.5°C

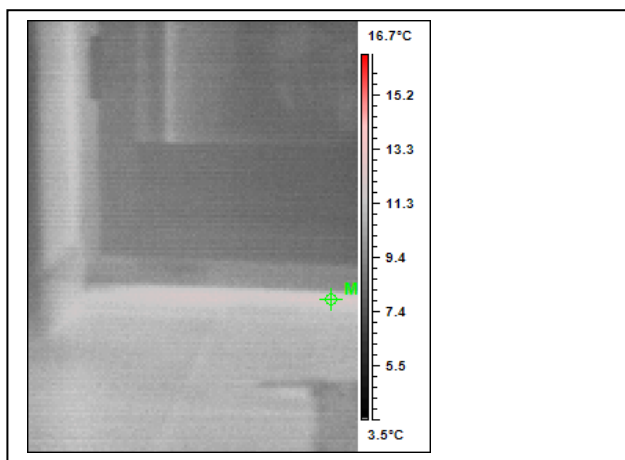
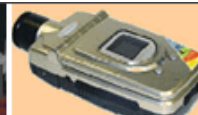
**Notations:**

<<NTL>>	<<NTV>>
---------	---------

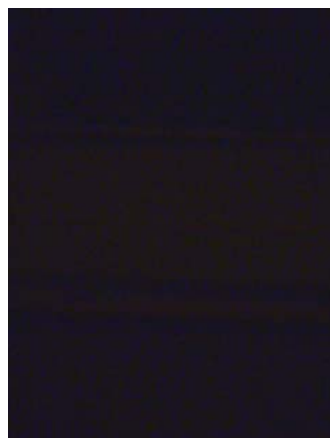
**Fault Rating:**

<b>LOW</b>	<b>MODERATE</b>	<b>HIGH</b>	<b>EXTREME</b>
------------	-----------------	-------------	----------------

**Comments:**



Infrared Image



Visual Image

**Information:**

FileName	IMAGE033.IRI
CreateTime	Monday, October 15, 2007 8:28:31 AM
Emissivity	0.98
Background Temp	8.6°C
Distance	1.8m
Max Temp	13.3°C
Min Temp	7.2°C
Voice Comment	

**Analyses Table:**

Object Parameter	Value
Max	13.3°C

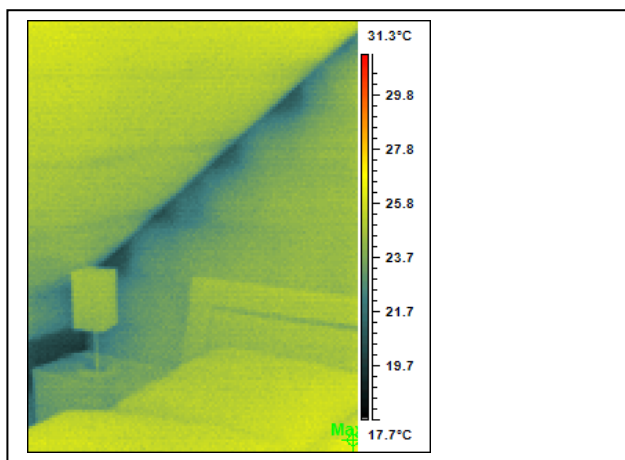
**Notations:**

<<NTL>>	<<NTV>>
---------	---------

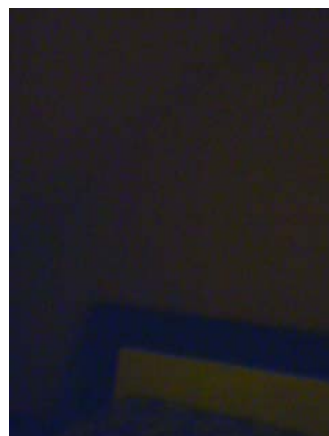
**Fault Rating:**

LOW	MODERATE	HIGH	EXTREME
-----	----------	------	---------

**Comments:**



Infrared Image



Visual Image

### Information:

FileName	IMAGE039.IRI
CreateTime	Monday, October 15, 2007 9:05:12 AM
Emissivity	0.98
Background Temp	26.8°C
Distance	1.8m
Max Temp	26.7°C
Min Temp	18.0°C
Voice Comment	

### Analyses Table:

Object Parameter	Value
Max	26.7°C

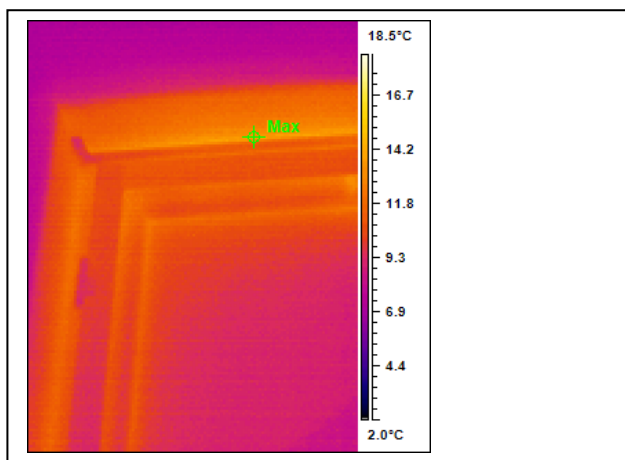
### Notations:

<<NTL>>	<<NTV>>
---------	---------

### Fault Rating:

LOW	MODERATE	HIGH	EXTREME
-----	----------	------	---------

### Comments:



Infrared Image



Visual Image

### Information:

FileName	IMAGE035.IRI
CreateTime	Monday, October 15, 2007 8:28:58 AM
Emissivity	0.98
Background Temp	8.7°C
Distance	1.8m
Max Temp	15.3°C
Min Temp	6.3°C
Voice Comment	

### Analyses Table:

Object Parameter	Value
Max	15.3°C

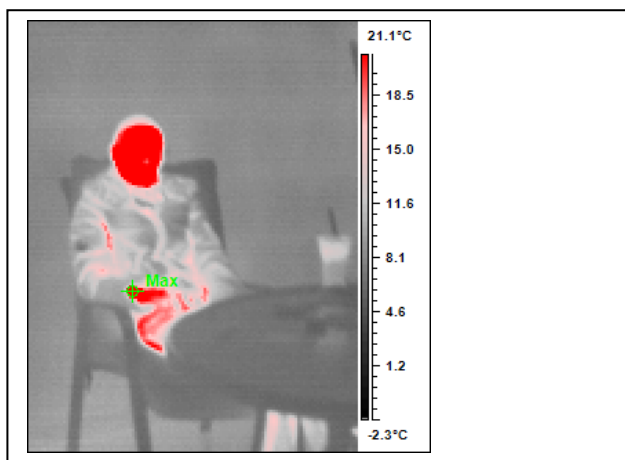
### Notations:

<<NTL>>	<<NTV>>
---------	---------

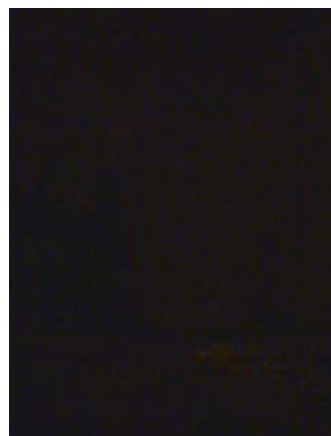
### Fault Rating:

LOW	MODERATE	HIGH	EXTREME
-----	----------	------	---------

### Comments:



Infrared Image



Visual Image

### Information:

FileName	IMAGE036.IRI
CreateTime	Monday, October 15, 2007 8:30:47 AM
Emissivity	0.98
Background Temp	8.8°C
Distance	1.8m
Max Temp	208.1°C
Min Temp	4.4°C
Voice Comment	

### Analyses Table:

Object Parameter	Value
Max	208.1°C

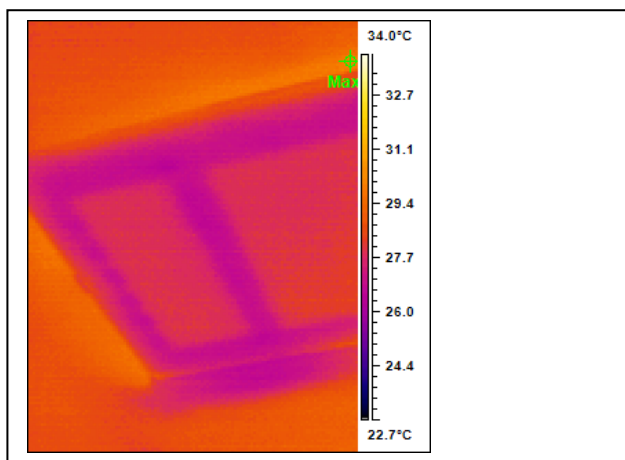
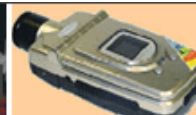
### Notations:

<<NTL>>	<<NTV>>
---------	---------

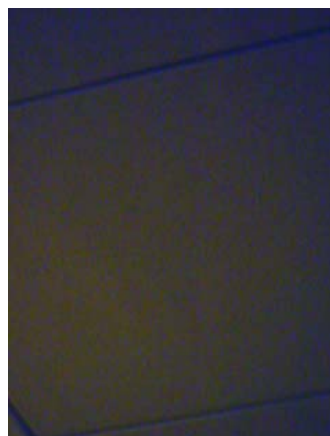
### Fault Rating:

LOW	MODERATE	HIGH	EXTREME
-----	----------	------	---------

### Comments:



Infrared Image



Visual Image

### Information:

FileName	IMAGE037.IRI
CreateTime	Monday, October 15, 2007 9:02:19 AM
Emissivity	0.98
Background Temp	26.1°C
Distance	1.8m
Max Temp	30.4°C
Min Temp	26.1°C
Voice Comment	

### Analyses Table:

Object Parameter	Value
Max	30.4°C

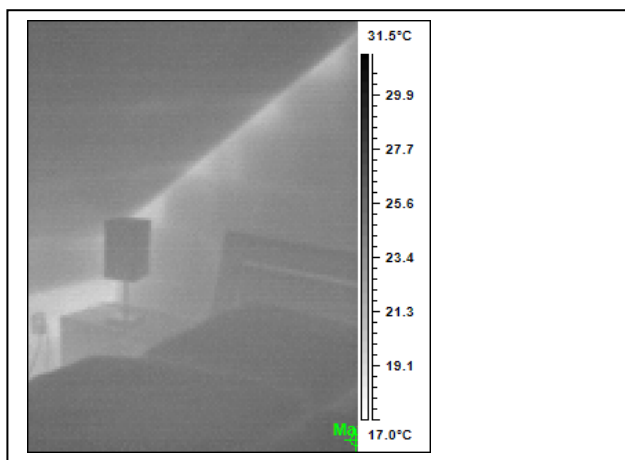
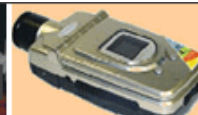
### Notations:

<<NTL>>	<<NTV>>
---------	---------

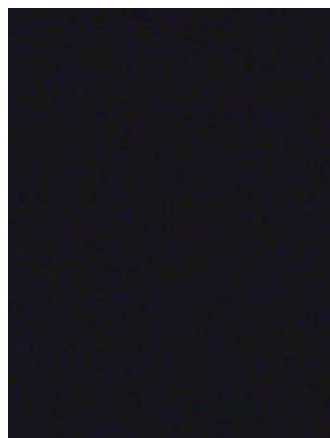
### Fault Rating:

LOW	MODERATE	HIGH	EXTREME
-----	----------	------	---------

### Comments:



Infrared Image



Visual Image

**Information:**

FileName	IMAGE038.IRI
CreateTime	Monday, October 15, 2007 9:04:51 AM
Emissivity	0.98
Background Temp	26.8°C
Distance	1.8m
Max Temp	26.6°C
Min Temp	17.7°C
Voice Comment	

**Analyses Table:**

Object Parameter	Value
Max	26.6°C

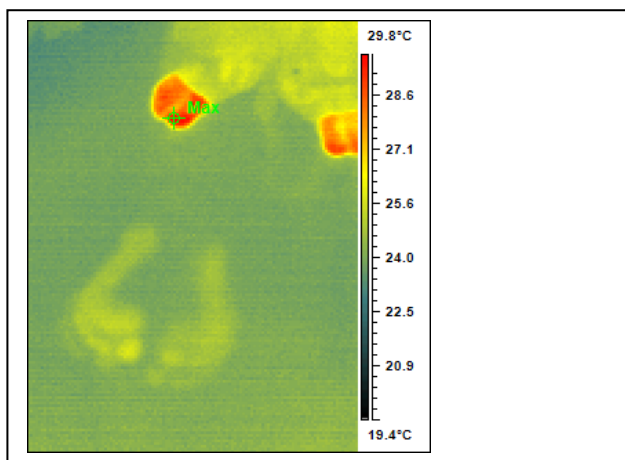
**Notations:**

<<NTL>>	<<NTV>>
---------	---------

**Fault Rating:**

LOW	MODERATE	HIGH	EXTREME
-----	----------	------	---------

**Comments:**



Infrared Image



Visual Image

### Information:

FileName	IMAGE042.IRI
CreateTime	Monday, October 15, 2007 9:06:59 AM
Emissivity	0.98
Background Temp	26.5°C
Distance	1.8m
Max Temp	31.0°C
Min Temp	22.9°C
Voice Comment	

### Analyses Table:

Object Parameter	Value
Max	31.0°C

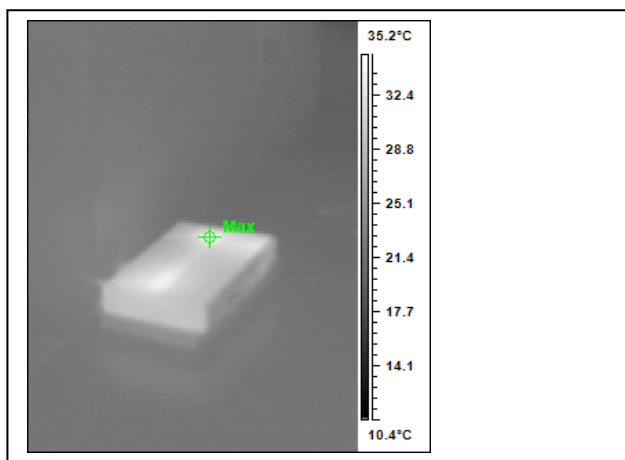
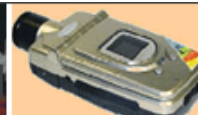
### Notations:

<<NTL>>	<<NTV>>
---------	---------

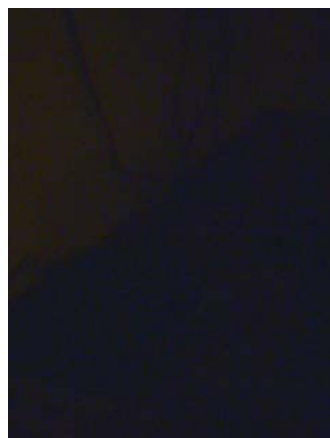
### Fault Rating:

LOW	MODERATE	HIGH	EXTREME
-----	----------	------	---------

### Comments:



Infrared Image



Visual Image

**Information:**

FileName	IMAGE040.IRI
CreateTime	Monday, October 15, 2007 9:05:58 AM
Emissivity	0.98
Background Temp	26.6°C
Distance	1.8m
Max Temp	39.3°C
Min Temp	18.7°C
Voice Comment	

**Analyses Table:**

Object Parameter	Value
Max	39.3°C

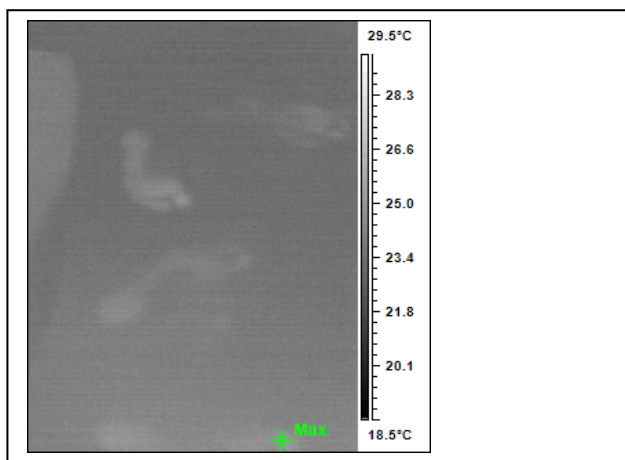
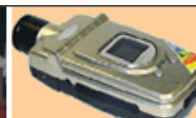
**Notations:**

<<NTL>>	<<NTV>>
---------	---------

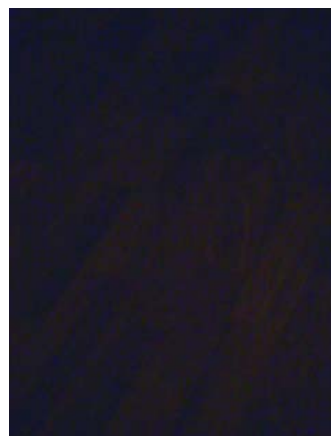
**Fault Rating:**

LOW	MODERATE	HIGH	EXTREME
-----	----------	------	---------

**Comments:**



Infrared Image



Visual Image

### Information:

FileName	IMAGE041.IRI
CreateTime	Monday, October 15, 2007 9:06:36 AM
Emissivity	0.98
Background Temp	26.6°C
Distance	1.8m
Max Temp	25.6°C
Min Temp	22.7°C
Voice Comment	

### Analyses Table:

Object Parameter	Value
Max	25.6°C

### Notations:

<<NTL>>	<<NTV>>
---------	---------

### Fault Rating:

LOW	MODERATE	HIGH	EXTREME
-----	----------	------	---------

### Comments: