

## UC2102-100, 3 LITRES



- ▶ Designed mainly for industries handling pharmaceutical and food products.
- ▶ All materials in contact with the conveyed product fulfil the requirements of GMP, FDA, USDA and 3-A.
- ▶ Turnkey conveyor that is easy to install and start up.
- ▶ Fully pneumatic.
- ▶ Hygienic butterfly valve.
- ▶ Compliant with ATEX (option).
- ▶ Unibody with tri-clamp connection.

### TECHNICAL DATA

Description	Unit	Value
Feed pressure, max.	MPa	0.7
Feed pressure range	MPa	0.4-0.6
Vacuum range	-kPa	61-75
Noise level range	dBA	72-76
Material		ASTM 316L, (EPDM/Q*)
Temperature range	°C	0-60
Safety classification control unit		IP54
Min. particle size	µm	0.5

\* Depends on material choice.

### TECHNICAL DATA SPECIFIC

Description	Air consumption range, NI/s	Weight, kg	Material batch volume, l
UC2102-100, 3 litres	5-7	35	3

### TECHNICAL DATA FILTER

Description	Filter area, m <sup>2</sup>	Material
Rod filter Gore Sinbran	0.11	PTFE, PE
Pleated filter	0.30	PTFE, Polyester, PUR, EN1.4571

### CAPACITY

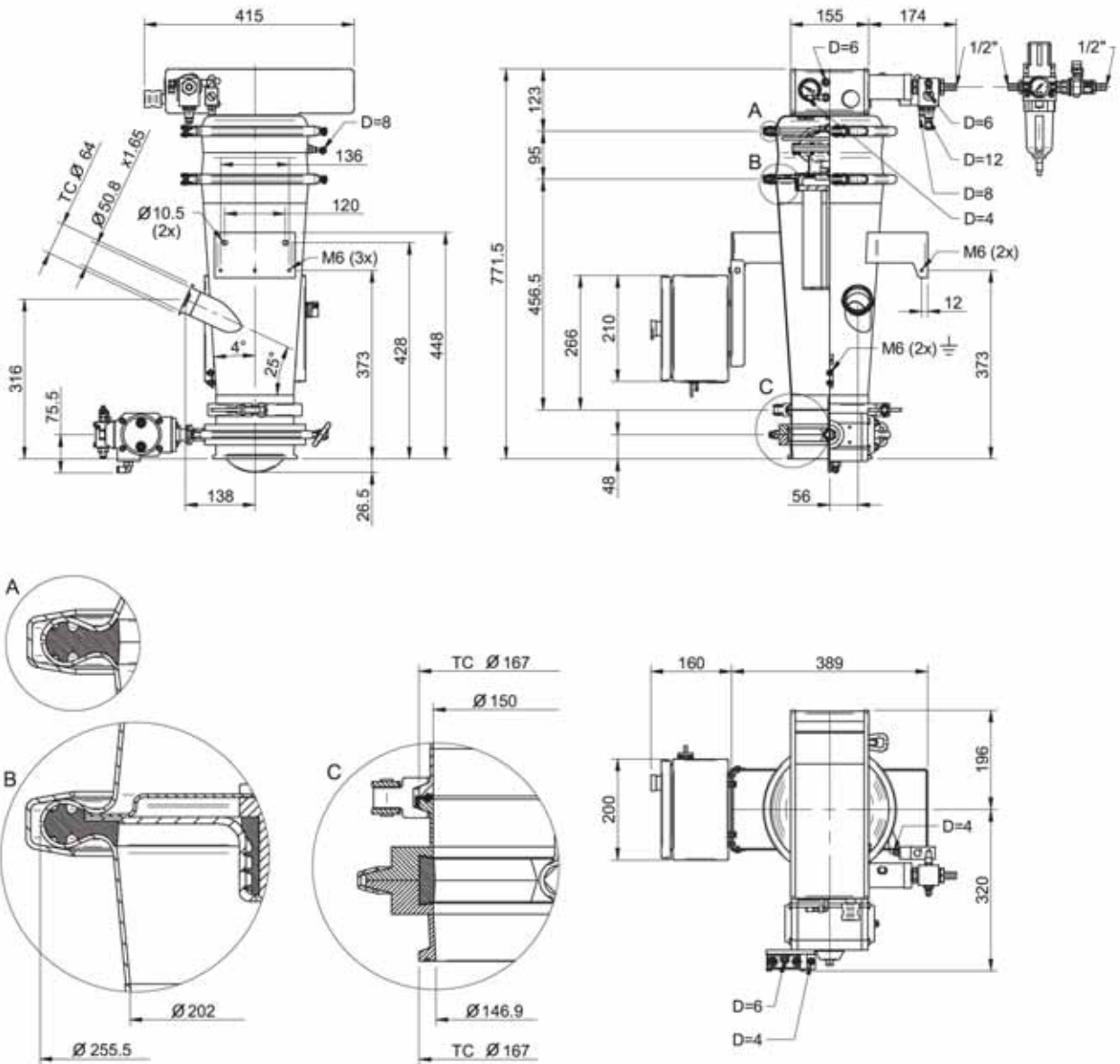
Capacity ton/h at different conveying distances		
5 m	10 m	20 m
0.90	0.45	0.18

## ORDERING INFORMATION

<b>1. Series</b>	<b>Code</b>
21	21
<b>2. Classification</b>	<b>Code</b>
None	AA
ATEX	AB
3.1 B Certificate	AC
3.1 B Certificate ATEX	AD
2.2 Certificate	AE
2.2 Certificate ATEX	AF
<b>3. Sealing material</b>	<b>Code</b>
Ethylene Propylene (EPDM)	00
Silicone (Q)	01
<b>4. Pump unit</b>	<b>Code</b>
No pump	AA
Pump unit Maxi L100	AB
<b>5. Filter type</b>	<b>Code</b>
No filter	00
Rod filter Gore Sinbran 2102	01
Rod filter Gore Sinbran Antistat 2102	05
Pleated filter 2102	09
<b>6. Filter shock module</b>	<b>Code</b>
Filter shock module UC21 internal	AA
<b>7. Connection module</b>	<b>Code</b>
Connection module UC2102 3l with brackets	00
<b>8. Inlet equipment</b>	<b>Code</b>
No inlet equipment	AA
Butterfly valve unit 2", actuator in SS, sealing in EPDM	AB
Butterfly valve unit 2", actuator in SS, sealing in Q	AC
<b>9. Bottom valve unit</b>	<b>Code</b>
No bottom valve	00
Butterfly valve unit DN150, actuator in al, sealing in EPDM	01
Butterfly valve unit DN150, actuator in al, sealing in Q	02
<b>10. Control unit</b>	<b>Code</b>
No control unit	AA
Control unit CU 1B	AB
Control unit CU 2B	AC
Control unit VU-EP	AD

## EXAMPLE OF ORDERING NUMBER

Example	Code
UC2102-100 with EPDM sealings, Gore Sinbran antistatic filter and 3 l internal volume incl. 3.1 B and ATEX	UC21.AD.00.AB.05.AA.00.AA.01.AB



## UC2104-100/200, 3 LITRES



- ▶ Designed mainly for industries handling pharmaceutical and food products.
- ▶ All materials in contact with the conveyed product fulfil the requirements of GMP, FDA, USDA and 3-A.
- ▶ Turnkey conveyor that is easy to install and start up.
- ▶ Fully pneumatic.
- ▶ Hygienic butterfly valve.
- ▶ Compliant with ATEX (option).
- ▶ Unibody with tri-clamp connection.

### TECHNICAL DATA

Description	Unit	Value
Feed pressure, max.	MPa	0.7
Feed pressure range	MPa	0.4-0.6
Vacuum range	-kPa	61-75
Noise level range	dBA	72-76
Material		ASTM 316L, (EPDM/Q*)
Temperature range	°C	0-60
Safety classification control unit		IP54
Min. particle size	µm	0.5

\* Depends on material choice.

### TECHNICAL DATA SPECIFIC

Description	Air consumption range, NI/s	Weight, kg	Material batch volume, l
UC2104-100, 3 litres	5-7	36	3
UC2104-200, 3 litres	10-14	36	3

### TECHNICAL DATA FILTER

Description	Filter area, m²	Material
Rod filter Gore Sinbran	0.19	PTFE, PE
Pleated filter	0.50	PTFE, Polyester, PUR, EN1.4571

### CAPACITY

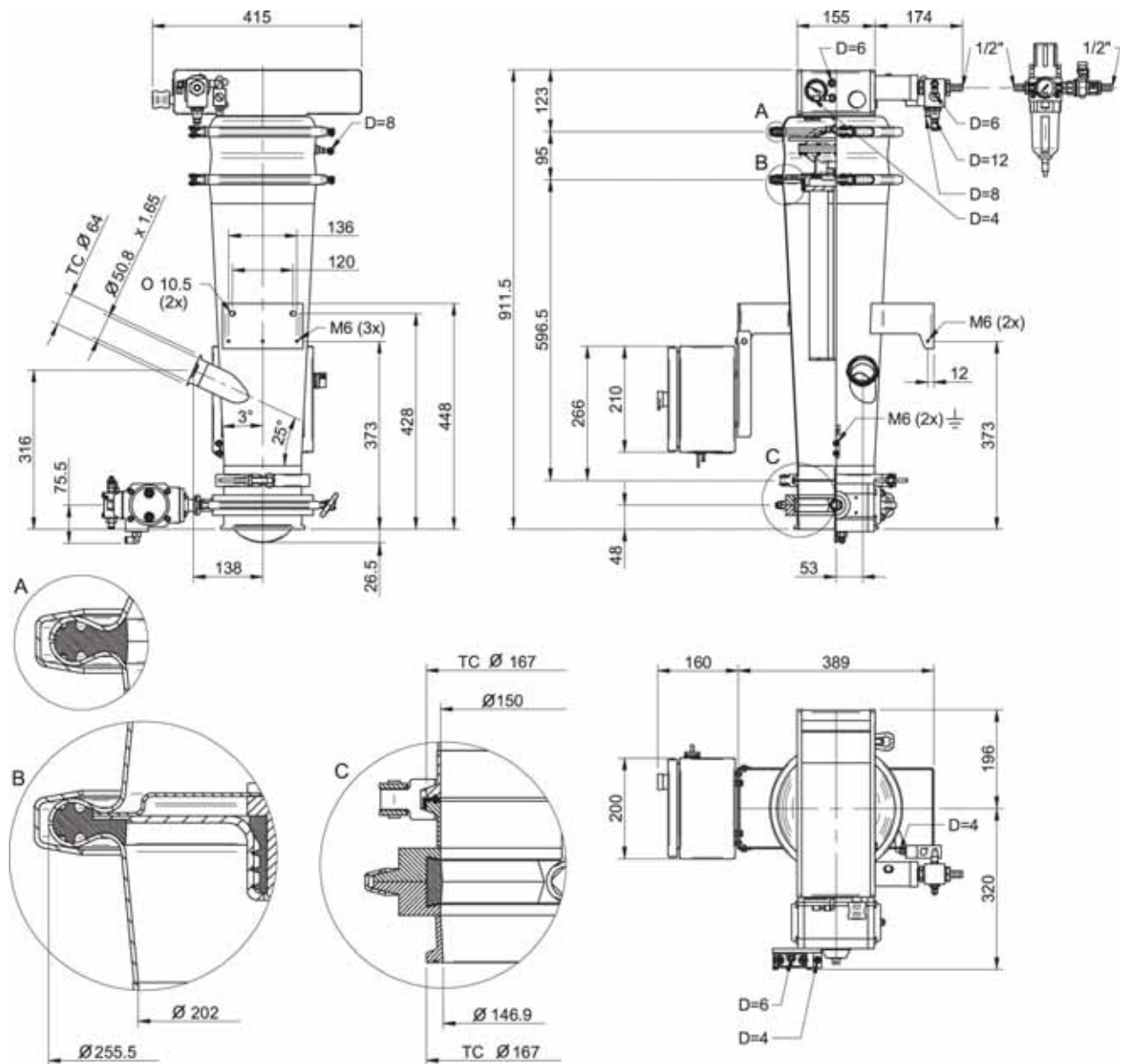
Capacity ton/h at different conveying distances				
Size	5 m	10 m	20 m	30 m
UC2104-100, 3 litres	0.90	0.45	0.18	
UC2104-200, 3 litres	1.80	0.90	0.45	0.30

## ORDERING INFORMATION

1. Series	Code
21	21
2. Classification	Code
None	AA
ATEX	AB
3.1 B Certificate	AC
3.1 B Certificate ATEX	AD
2.2 Certificate	AE
2.2 Certificate ATEX	AF
3. Sealing material	Code
Ethylene Propylene (EPDM)	00
Silicone (Q)	01
4. Pump unit	Code
No pump	AA
Pump unit Maxi L100	AB
Pump unit Maxi L200	AC
5. Filter type	Code
No filter	00
Rod filter Gore Sinbran 2104	02
Rod filter Gore Sinbran Antistat 2104	06
Pleated filter 2104	10
6. Filter shock module	Code
Filter shock module UC21 internal	AA
7. Connection module	Code
Connection module UC2104 3l with brackets	01
8. Inlet equipment	Code
No inlet equipment	AA
Butterfly valve unit 2", actuator in SS, sealing in EPDM	AB
Butterfly valve unit 2", actuator in SS, sealing in Q	AC
9. Bottom valve unit	Code
No bottom valve	00
Butterfly valve unit DN150, actuator in al, sealing in EPDM	01
Butterfly valve unit DN150, actuator in al, sealing in Q	02
10. Control unit	Code
No control unit	AA
Control unit CU 1B	AB
Control unit CU 2B	AC
Control unit VU-EP	AD

## EXAMPLE OF ORDERING NUMBER

Example	Code
UC2104-100 with EPDM sealings, Gore Sinbran antistatic filter and 3 l internal volume incl. 3.1 B and ATEX	UC21.AD.00.AC.06.AA.01.AA.01.AB



## UC2102-100, 5 LITRES



- ▶ Designed mainly for industries handling pharmaceutical and food products.
- ▶ All materials in contact with the conveyed product fulfil the requirements of GMP, FDA, USDA and 3-A.
- ▶ Turnkey conveyor that is easy to install and start up.
- ▶ Fully pneumatic.
- ▶ Hygienic butterfly valve.
- ▶ Compliant with ATEX (option).
- ▶ Unibody with tri-clamp connection.

### TECHNICAL DATA

Description	Unit	Value
Feed pressure, max.	MPa	0.7
Feed pressure range	MPa	0.4-0.6
Vacuum range	-kPa	61-75
Noise level range	dBA	72-76
Material		ASTM 316L, (EPDM/Q*)
Temperature range	°C	0-60
Safety classification control unit		IP54
Min. particle size	µm	0.5

\* Depends on material choice.

### TECHNICAL DATA SPECIFIC

Description	Air consumption range, NI/s	Weight, kg	Material batch volume, l
UC2102-100, 5 litres	5-7	36	5

### TECHNICAL DATA FILTER

Description	Filter area, m <sup>2</sup>	Material
Rod filter Gore Sinbran	0.11	PTFE, PE
Pleated filter	0.30	PTFE, Polyester, PUR, EN1.4571

### CAPACITY

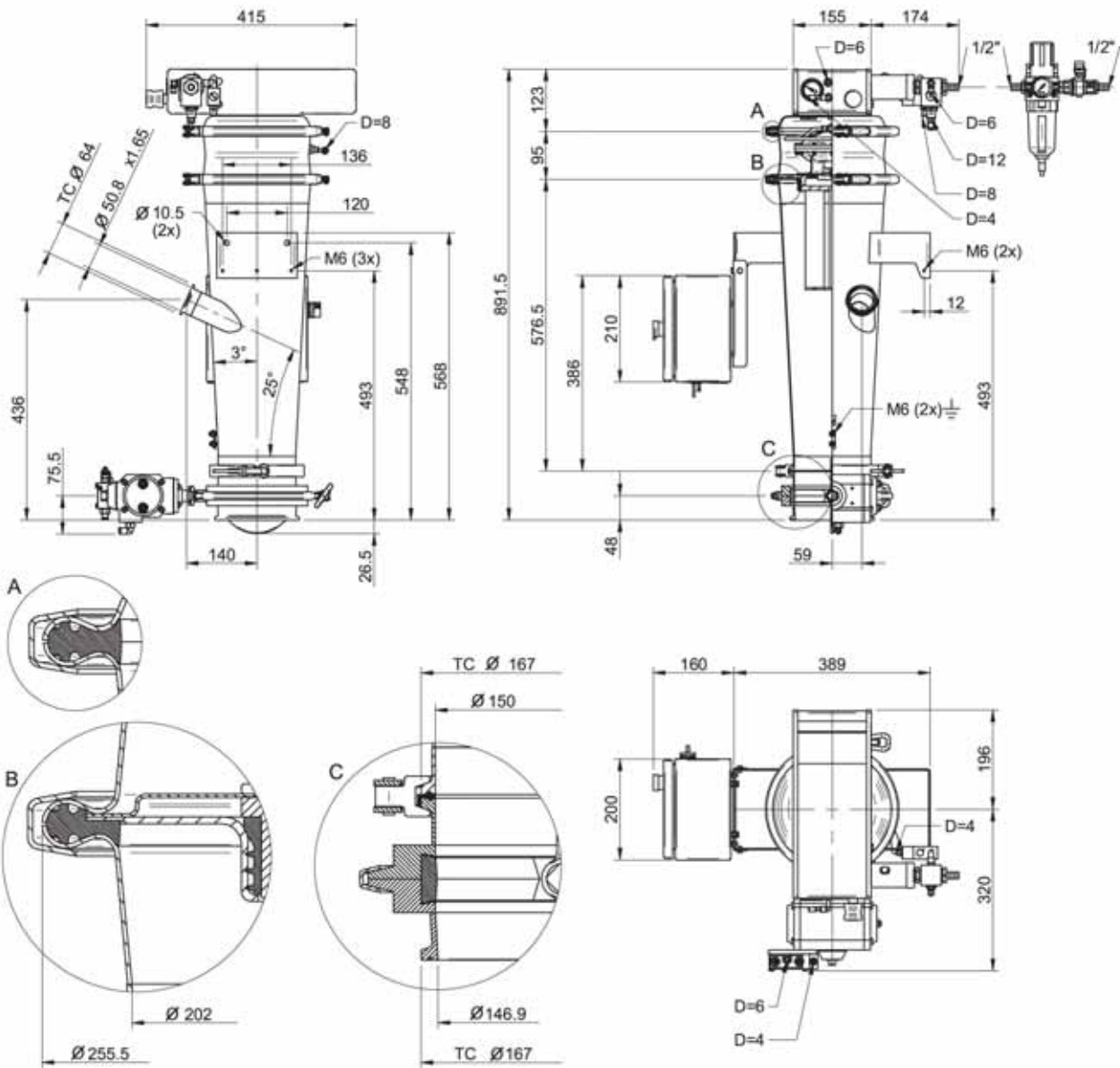
Capacity ton/h at different conveying distances		
5 m	10 m	20 m
0.90	0.45	0.18

## ORDERING INFORMATION

<b>1. Series</b>	<b>Code</b>
21	21
<b>2. Classification</b>	<b>Code</b>
None	AA
ATEX	AB
3.1 B Certificate	AC
3.1 B Certificate ATEX	AD
2.2 Certificate	AE
2.2 Certificate ATEX	AF
<b>3. Sealing material</b>	<b>Code</b>
Ethylene Propylene (EPDM)	00
Silicone (Q)	01
<b>4. Pump unit</b>	<b>Code</b>
No pump	AA
Pump unit Maxi L100	AB
<b>5. Filter type</b>	<b>Code</b>
No filter	00
Rod filter Gore Sinbran 2102	01
Rod filter Gore Sinbran Antistat 2102	05
Pleated filter 2102	09
<b>6. Filter shock module</b>	<b>Code</b>
Filter shock module UC21 internal	AA
<b>7. Connection module</b>	<b>Code</b>
Connection module UC2102 5l with brackets	02
<b>8. Inlet equipment</b>	<b>Code</b>
No inlet equipment	AA
Butterfly valve unit 2", actuator in SS, sealing in EPDM	AB
Butterfly valve unit 2", actuator in SS, sealing in Q	AC
<b>9. Bottom valve unit</b>	<b>Code</b>
No bottom valve	00
Butterfly valve unit DN150, actuator in al, sealing in EPDM	01
Butterfly valve unit DN150, actuator in al, sealing in Q	02
<b>10. Control unit</b>	<b>Code</b>
No control unit	AA
Control unit CU 1B	AB
Control unit CU 2B	AC
Control unit VU-EP	AD

## EXAMPLE OF ORDERING NUMBER

Example	Code
UC2102-100 with Q sealings, Gore Sinbran filter and 5 l internal volume incl. 2.2	UC21.AE.01.AB.01.AA.02.AA.02.AB



## UC2104-100/200, 5 LITRES



- ▶ Designed mainly for industries handling pharmaceutical and food products.
- ▶ All materials in contact with the conveyed product fulfil the requirements of GMP, FDA, USDA and 3-A.
- ▶ Turnkey conveyor that is easy to install and start up.
- ▶ Fully pneumatic.
- ▶ Hygienic butterfly valve.
- ▶ Compliant with ATEX (option).
- ▶ Unibody with tri-clamp connection.

### TECHNICAL DATA

Description	Unit	Value
Feed pressure, max.	MPa	0.7
Feed pressure range	MPa	0.4-0.6
Vacuum range	-kPa	61-75
Noise level range	dBA	72-76
Material		ASTM 316L, (EPDM/Q*)
Temperature range	°C	0-60
Safety classification control unit		IP54
Min. particle size	µm	0.5

\* Depends on material choice.

### TECHNICAL DATA SPECIFIC

Description	Air consumption range, NI/s	Weight, kg	Material batch volume, l
UC2104-100, 5 litres	5-7	37	5
UC2104-200, 5 litres	10-14	37	5

### TECHNICAL DATA FILTER

Description	Filter area, m <sup>2</sup>	Material
Rod filter Gore Sinbran	0.19	PTFE, PE
Pleated filter	0.50	PTFE, Polyester, PUR, EN1.4571

### CAPACITY

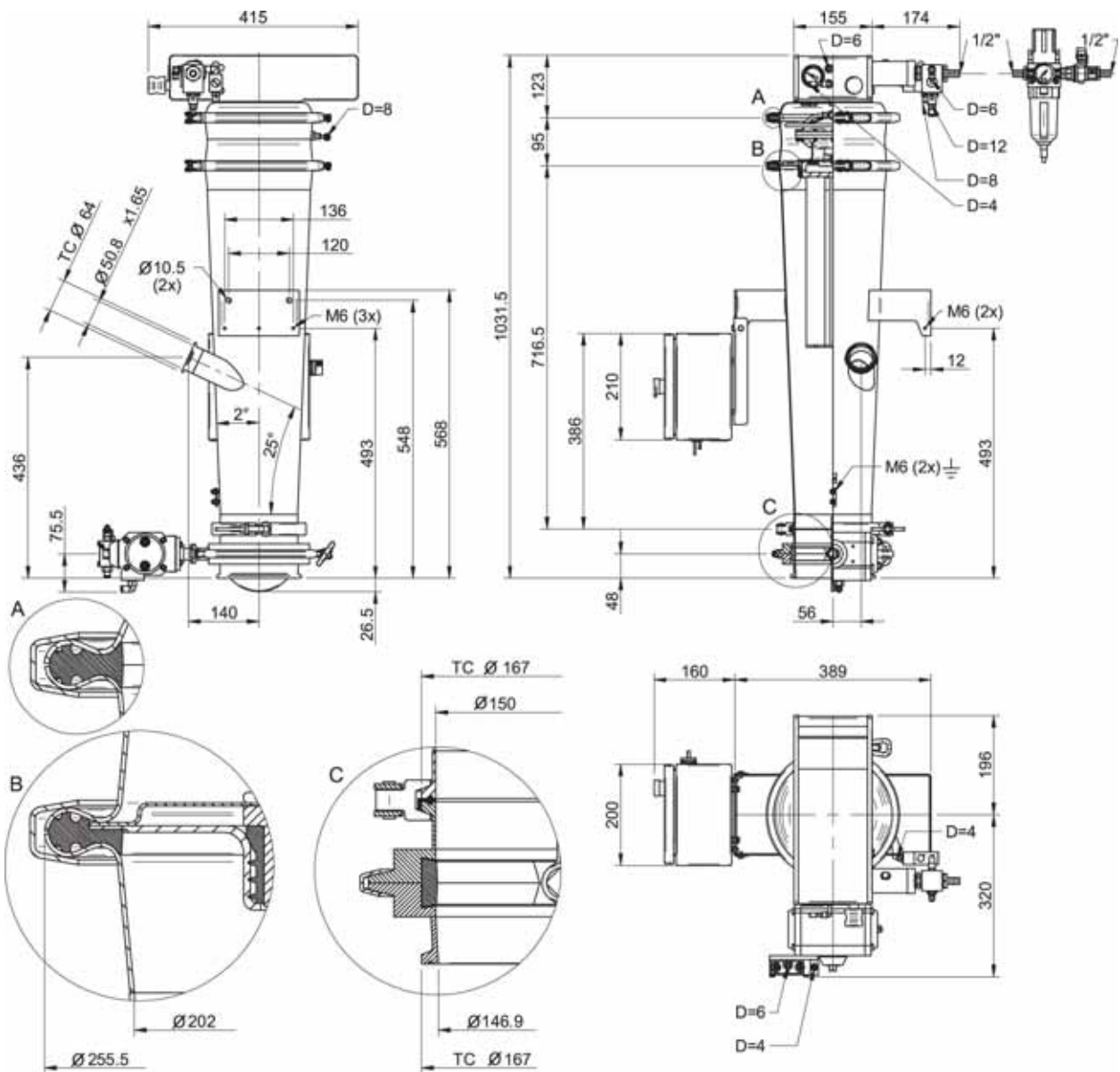
Capacity ton/h at different conveying distances				
Size	5 m	10 m	20 m	30 m
UC2104-100, 5 litres	0.90	0.45	0.18	
UC2104-200, 5 litres	1.80	0.90	0.45	0.30

## ORDERING INFORMATION

1. Series	Code
21	21
2. Classification	Code
None	AA
ATEX	AB
3.1 B Certificate	AC
3.1 B Certificate ATEX	AD
2.2 Certificate	AE
2.2 Certificate ATEX	AF
3. Sealing material	Code
Ethylene Propylene (EPDM)	00
Silicone (Q)	01
4. Pump unit	Code
No pump	AA
Pump unit Maxi L100	AB
Pump unit Maxi L200	AC
5. Filter type	Code
No filter	00
Rod filter Gore Sinbran 2104	02
Rod filter Gore Sinbran Antistat 2104	06
Pleated filter 2104	10
6. Filter shock module	Code
Filter shock module UC21 internal	AA
7. Connection module	Code
Connection module UC2104 5l with brackets	03
8. Inlet equipment	Code
No inlet equipment	AA
Butterfly valve unit 2", actuator in SS, sealing in EPDM	AB
Butterfly valve unit 2", actuator in SS, sealing in Q	AC
9. Bottom valve unit	Code
No bottom valve	00
Butterfly valve unit DN150, actuator in al, sealing in EPDM	01
Butterfly valve unit DN150, actuator in al, sealing in Q	02
10. Control unit	Code
No control unit	AA
Control unit CU 1B	AB
Control unit CU 2B	AC
Control unit VU-EP	AD

## EXAMPLE OF ORDERING NUMBER

Example	Code
UC2104-100 with EPDM sealings, Gore Sinbran antistatic filter and 5 l internal volum incl. 2.2 and ATEX	UC21.AF.00.AB.06.AA.03.AB.01.AC



## UC3302-200/400, 12 LITRES



- ▶ Designed mainly for industries handling pharmaceutical and food products.
- ▶ All materials in contact with the conveyed product fulfil the requirements of GMP, FDA, USDA and 3-A.
- ▶ Turnkey conveyor that is easy to install and start up.
- ▶ Fully pneumatic.
- ▶ Hygienic butterfly valve.
- ▶ Compliant with ATEX (option).
- ▶ Unibody with tri-clamp connection.

### TECHNICAL DATA

Description	Unit	Value
Feed pressure, max.	MPa	0.7
Feed pressure range	MPa	0.4–0.6
Vacuum range	-kPa	61–75
Noise level range	dB(A)	72–76
Material		ASTM 316L, (EPDM/Q*)
Temperature range	°C	0–60
Safety classification control unit		IP54
Min. particle size	µm	0.5

\* Depends on material choice.

### TECHNICAL DATA SPECIFIC

Description	Air consumption range, NI/s	Weight, kg	Material batch volume, l
UC3302-200, 12 litres	10–14	54	12
UC3302-400, 12 litres	20–28	54	12

### TECHNICAL DATA FILTER

Description	Filter area, m <sup>2</sup>	Material
Rod filter Gore Sinbran	0.33	PTFE, PE
Pleated filter	0.90	PTFE, Polyester, PUR, EN1.4571

### CAPACITY

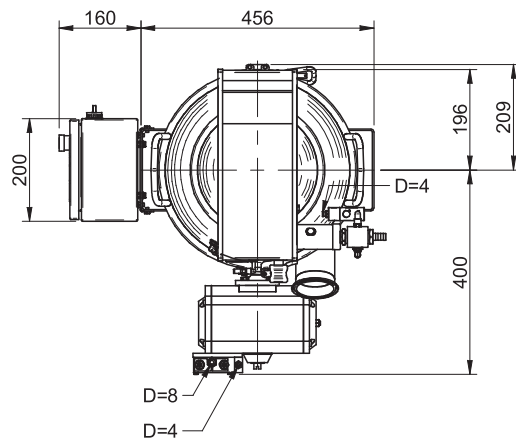
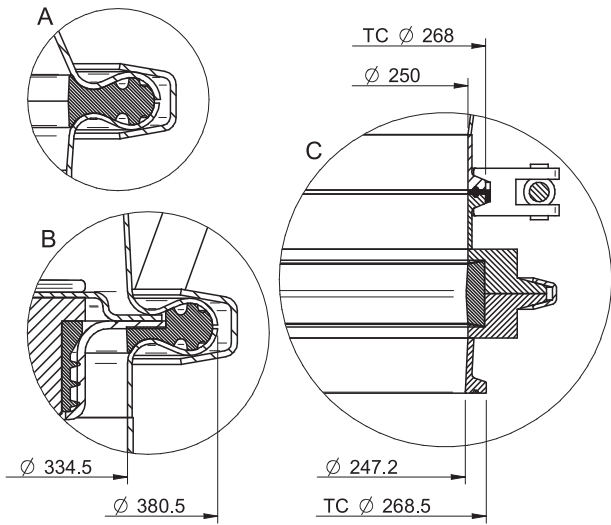
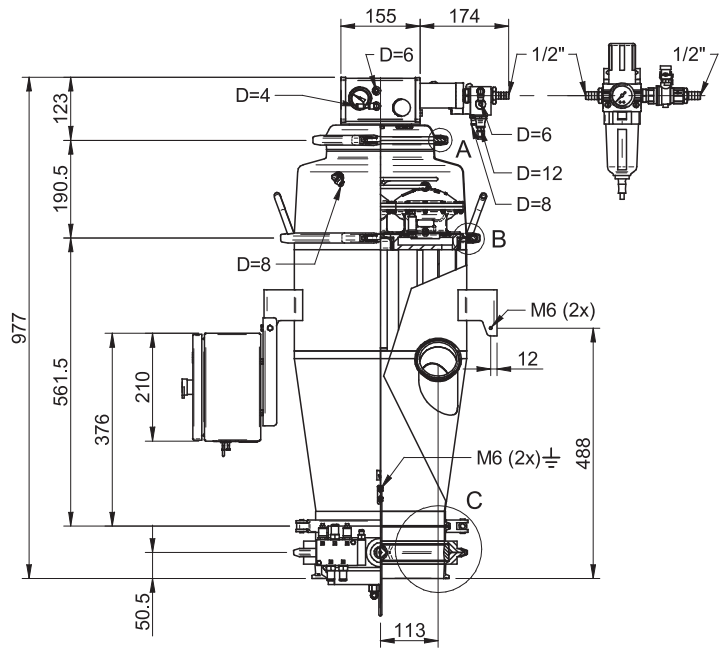
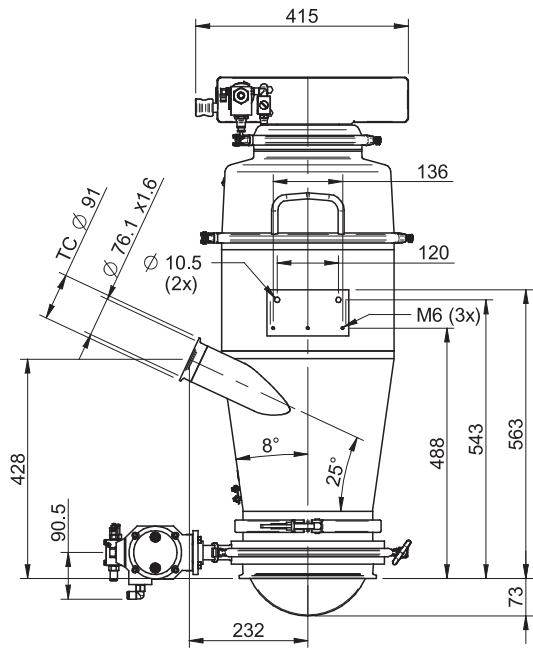
Capacity ton/h at different conveying distances				
Size	5 m	10 m	20 m	30 m
UC3302-200, 12 litres	1.80	0.90	0.45	0.30
UC3302-400, 12 litres	3.60	1.80	0.90	0.60

## ORDERING INFORMATION

<b>1. Series</b>	<b>Code</b>
33	33
<b>2. Classification</b>	<b>Code</b>
None	AA
ATEX	AB
3.1 B Certificate	AC
3.1 B Certificate ATEX	AD
2.2 Certificate	AE
2.2 Certificate ATEX	AF
<b>3. Sealing material</b>	<b>Code</b>
Ethylene Propylene (EPDM)	00
Silicone (Q)	01
<b>4. Pump unit</b>	<b>Code</b>
No pump	AA
Pump unit Maxi L200	AC
Pump unit Maxi L400	AD
<b>5. Filter type</b>	<b>Code</b>
No filter	00
Rod filter Gore Sinbran 3302	03
Rod filter Gore Sinbran Antistat 3302	07
Pleated filter 3302	11
<b>6. Filter shock module</b>	<b>Code</b>
Filter shock module UC33 internal	AB
<b>7. Connection module</b>	<b>Code</b>
Connection module UC3302 12l with brackets	04
<b>8. Inlet equipment</b>	<b>Code</b>
No inlet equipment	AA
Butterfly valve unit 3", actuator in SS, sealing in EPDM	AD
Butterfly valve unit 3", actuator in SS, sealing in Q	AE
<b>9. Bottom valve unit</b>	<b>Code</b>
No bottom valve	00
Butterfly valve unit DN250, actuator in al, sealing in EPDM	03
Butterfly valve unit DN250, actuator in al, sealing in Q	04
<b>10. Control unit</b>	<b>Code</b>
No control unit	AA
Control unit CU 1B	AB
Control unit CU 2B	AC
Control unit VU-EP	AD

## EXAMPLE OF ORDERING NUMBER

Example	Code
UC3302-400 with Q sealings, Pleated filter and 12 l internal volume incl. 2.2	UC33.AE.01.AD.11.AB.04.AA.04.AB



## UC3304-400/600/800, 12 LITRES



- ▶ Designed mainly for industries handling pharmaceutical and food products.
- ▶ All materials in contact with the conveyed product fulfil the requirements of GMP, FDA, USDA and 3-A.
- ▶ Turnkey conveyor that is easy to install and start up.
- ▶ Fully pneumatic.
- ▶ Hygienic butterfly valve.
- ▶ Compliant with ATEX (option).
- ▶ Unibody with tri-clamp connection.

### TECHNICAL DATA

Description	Unit	Value
Feed pressure, max.	MPa	0.7
Feed pressure range	MPa	0.4–0.6
Vacuum range	-kPa	61–75
Noise level range	dB(A)	72–76
Material		ASTM 316L, (EPDM/Q*)
Temperature range	°C	0–60
Safety classification control unit		IP54
Min. particle size	µm	0.5

\* Depends on material choice.

### TECHNICAL DATA SPECIFIC

Description	Air consumption range, NI/s	Weight, kg	Material batch volume, l
UC3304-400, 12 litres	20–28	56	12
UC3304-600, 12 litres	30–42	61	12
UC3304-800, 12 litres	40–56	61	12

### TECHNICAL DATA FILTER

Description	Filter area, m <sup>2</sup>	Material
Rod filter Gore Sinbran	0.57	PTFE, PE
Pleated filter	1.50	PTFE, Polyester, PUR, EN1.4571

### CAPACITY

Capacity ton/h at different conveying distances					
Size	5 m	10 m	20 m	30 m	
UC3304-400, 12 litres	3.60	1.80	0.90	0.60	
UC3304-600, 12 litres	5.40	2.70	1.35	0.90	
UC3304-800, 12 litres	7.20	3.60	1.80	1.20	

## ORDERING INFORMATION

<b>1. Series</b>	<b>Code</b>
33	33
<b>2. Classification</b>	<b>Code</b>
None	AA
ATEX	AB
3.1 B Certificate	AC
3.1 B Certificate ATEX	AD
2.2 Certificate	AE
2.2 Certificate ATEX	AF
<b>3. Sealing material</b>	<b>Code</b>
Ethylene Propylene (EPDM)	00
Silicone (Q)	01
<b>4. Pump unit</b>	<b>Code</b>
No pump	AA
Pump unit Maxi L400	AD
Pump unit Maxi L600	AE
Pump unit Maxi L800	AF
<b>5. Filter type</b>	<b>Code</b>
No filter	00
Rod filter Gore Sinbran 3304	04
Rod filter Gore Sinbran Antistat 3304	08
Pleated filter 3304	12
<b>6. Filter shock module</b>	<b>Code</b>
Filter shock module UC33 internal	AB
<b>7. Connection module</b>	<b>Code</b>
Connection module UC3304 12l with brackets	05
<b>8. Inlet equipment</b>	<b>Code</b>
No inlet equipment	AA
Butterfly valve unit 3", actuator in SS, sealing in EPDM	AD
Butterfly valve unit 3", actuator in SS, sealing in Q	AE
<b>9. Bottom valve unit</b>	<b>Code</b>
No bottom valve	00
Butterfly valve unit DN250, actuator in al, sealing in EPDM	03
Butterfly valve unit DN250, actuator in al, sealing in Q	04
<b>10. Control unit</b>	<b>Code</b>
No control unit	AA
Control unit CU 1B	AB
Control unit CU 2B	AC
Control unit VU-EP	AD

## EXAMPLE OF ORDERING NUMBER

Example	Code
UC3304-600 with EPDM sealings, Pleated filter and 12 l internal volume incl. 3.1 B	UC33.AD.00.AE.12.AB.05.AA.03.AB





## UC3302-200/400, 18 LITRES



- ▶ Designed mainly for industries handling pharmaceutical and food products.
- ▶ All materials in contact with the conveyed product fulfil the requirements of GMP, FDA, USDA and 3-A.
- ▶ Turnkey conveyor that is easy to install and start up.
- ▶ Fully pneumatic.
- ▶ Hygienic butterfly valve.
- ▶ Compliant with ATEX (option).
- ▶ Unibody with tri-clamp connection.

### TECHNICAL DATA

Description	Unit	Value
Feed pressure, max.	MPa	0.7
Feed pressure range	MPa	0.4–0.6
Vacuum range	-kPa	61–75
Noise level range	dBA	72–76
Material		ASTM 316L, (EPDM/Q*)
Temperature range	°C	0–60
Safety classification control unit		IP54
Min. particle size	µm	0.5

\* Depends on material choice.

### TECHNICAL DATA SPECIFIC

Description	Air consumption range, NI/s	Weight, kg	Material batch volume, l
UC3302-200, 18 litres	10–14	55	18
UC3302-400, 18 litres	20–28	55	18

### TECHNICAL DATA FILTER

Description	Filter area, m <sup>2</sup>	Material
Rod filter Gore Sinbran	0.33	PTFE, PE
Pleated filter	0.90	PTFE, Polyester, PUR, EN1.4571

### CAPACITY

Capacity ton/h at different conveying distances				
Size	5 m	10 m	20 m	30 m
UC3302-200, 18 litres	1.80	0.90	0.45	0.30
UC3302-400, 18 litres	3.60	1.80	0.90	0.60

## ORDERING INFORMATION

1. Series	Code
33	33
2. Classification	Code
None	AA
ATEX	AB
3.1 B Certificate	AC
3.1 B Certificate ATEX	AD
2.2 Certificate	AE
2.2 Certificate ATEX	AF
3. Sealing material	Code
Ethylene Propylene (EPDM)	00
Silicone (Q)	01
4. Pump unit	Code
No pump	AA
Pump unit Maxi L200	AC
Pump unit Maxi L400	AD
5. Filter type	Code
No filter	00
Rod filter Gore Sinbran 3302	03
Rod filter Gore Sinbran Antistat 3302	07
Pleated filter 3302	11
6. Filter shock module	Code
Filter shock module UC33 internal	AB
7. Connection module	Code
Connection module UC3302 18l with brackets	06
8. Inlet equipment	Code
No inlet equipment	AA
Butterfly valve unit 3", actuator in SS, sealing in EPDM	AD
Butterfly valve unit 3", actuator in SS, sealing in Q	AE
9. Bottom valve unit	Code
No bottom valve	00
Butterfly valve unit DN250, actuator in al, sealing in EPDM	03
Butterfly valve unit DN250, actuator in al, sealing in Q	04
10. Control unit	Code
No control unit	AA
Control unit CU 1B	AB
Control unit CU 2B	AC
Control unit VU-EP	AD

## EXAMPLE OF ORDERING NUMBER

Example	Code
UC3302-200 with EPDM sealings, Pleated filter and 18 l internal volume incl. 3.1 B	UC33.AC.00.AC.11.AB.06.AA.03.AB



## UC3304-400/600/800, 18 LITRES



- ▶ Designed mainly for industries handling pharmaceutical and food products.
- ▶ All materials in contact with the conveyed product fulfil the requirements of GMP, FDA, USDA and 3-A.
- ▶ Turnkey conveyor that is easy to install and start up.
- ▶ Fully pneumatic.
- ▶ Hygienic butterfly valve.
- ▶ Compliant with ATEX (option).
- ▶ Unibody with tri-clamp connection.

### TECHNICAL DATA

Description	Unit	Value
Feed pressure, max.	MPa	0.7
Feed pressure range	MPa	0.4–0.6
Vacuum range	-kPa	61–75
Noise level range	dBA	72–76
Material		ASTM 316L, (EPDM/Q*)
Temperature range	°C	0–60
Safety classification control unit		IP54
Min. particle size	µm	0.5

\* Depends on material choice.

### TECHNICAL DATA SPECIFIC

Description	Air consumption range, NI/s	Weight, kg	Material batch volume, l
UC3304-400, 18 litres	20–28	57	18
UC3304-600, 18 litres	30–42	62	18
UC3304-800, 18 litres	40–56	62	18

### TECHNICAL DATA FILTER

Description	Filter area, m <sup>2</sup>	Material
Rod filter Gore Sinbran	0.57	PTFE, PE
Pleated filter	1.50	PTFE, Polyester, PUR, EN1.4571

### CAPACITY

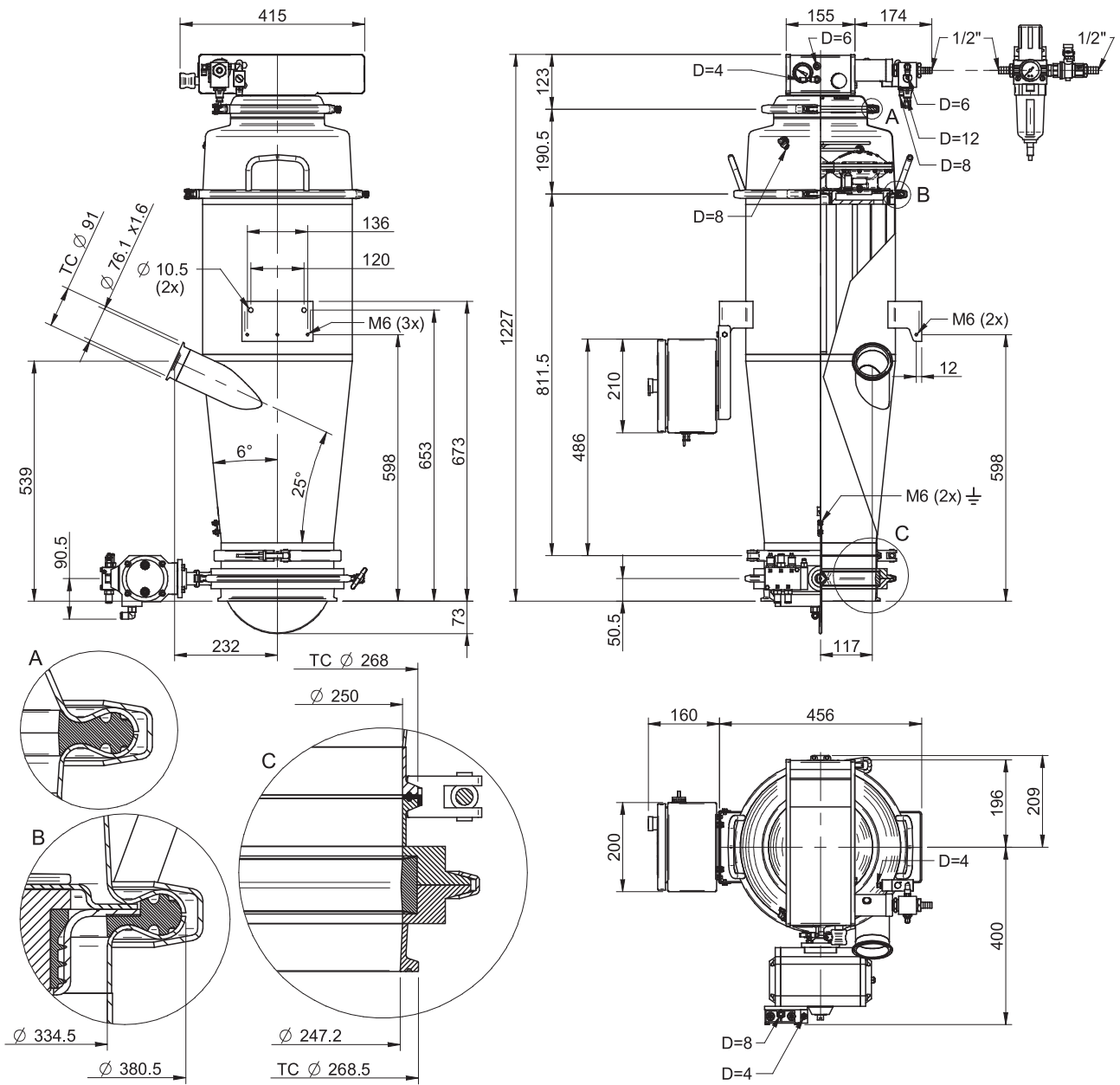
Capacity ton/h at different conveying distances					
Size	5 m	10 m	20 m	30 m	
UC3304-400, 18 litres	3.60	1.80	0.90	0.60	
UC3304-600, 18 litres	5.40	2.70	1.35	0.90	
UC3304-800, 18 litres	7.20	3.60	1.80	1.20	

## ORDERING INFORMATION

<b>1. Series</b>	<b>Code</b>
33	33
<b>2. Classification</b>	<b>Code</b>
None	AA
ATEX	AB
3.1 B Certificate	AC
3.1 B Certificate ATEX	AD
2.2 Certificate	AE
2.2 Certificate ATEX	AF
<b>3. Sealing material</b>	<b>Code</b>
Ethylene Propylene (EPDM)	00
Silicone (Q)	01
<b>4. Pump unit</b>	<b>Code</b>
No pump	AA
Pump unit Maxi L400	AD
Pump unit Maxi L600	AE
Pump unit Maxi L800	AF
<b>5. Filter type</b>	<b>Code</b>
No filter	00
Rod filter Gore Sinbran 3304	04
Rod filter Gore Sinbran Antistat 3304	08
Pleated filter 3304	12
<b>6. Filter shock module</b>	<b>Code</b>
Filter shock module UC33 internal	AB
<b>7. Connection module</b>	<b>Code</b>
Connection module UC3304 18l with brackets	07
<b>8. Inlet equipment</b>	<b>Code</b>
No inlet equipment	AA
Butterfly valve unit 3", actuator in SS, sealing in EPDM	AD
Butterfly valve unit 3", actuator in SS, sealing in Q	AE
<b>9. Bottom valve unit</b>	<b>Code</b>
No bottom valve	00
Butterfly valve unit DN250, actuator in al, sealing in EPDM	03
Butterfly valve unit DN250, actuator in al, sealing in Q	04
<b>10. Control unit</b>	<b>Code</b>
No control unit	AA
Control unit CU 1B	AB
Control unit CU 2B	AC
Control unit VU-EP	AD

## EXAMPLE OF ORDERING NUMBER

Example	Code
UC3304-600 with Q sealings, Pleated filter and 18 l internal volume incl. CE 2A	UC33.AA.01.AE.04.AB.07.AA.04.AD



UC3304-400



## BUTTERFLY VALVE UNIT, ACTUATOR IN ALUMINIUM



- ▶ Unload the conveyed product
- ▶ Hygienic design
- ▶ Fitted with actuator in aluminium
- ▶ Fulfils the requirements of FDA

### TECHNICAL DATA

Description	Unit	Value
Feed pressure, max.	MPa	0.7
Feed pressure	MPa	0.4–0.6
Material		SS EN1.4404, Al, (EPDM/Q*)
Temperature range	°C	0–60

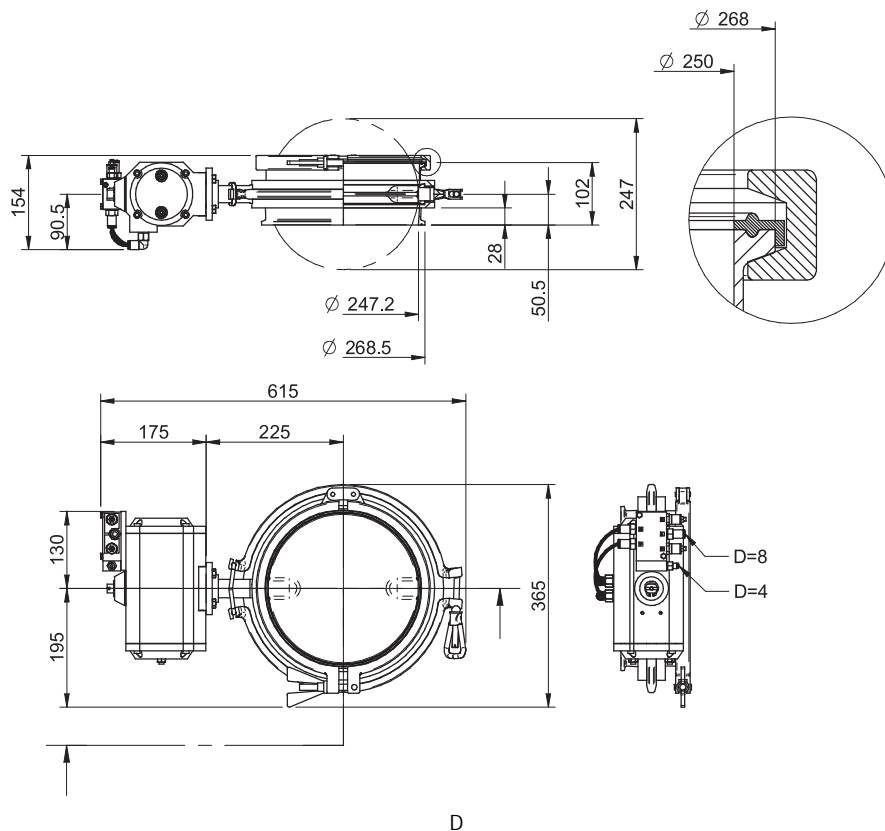
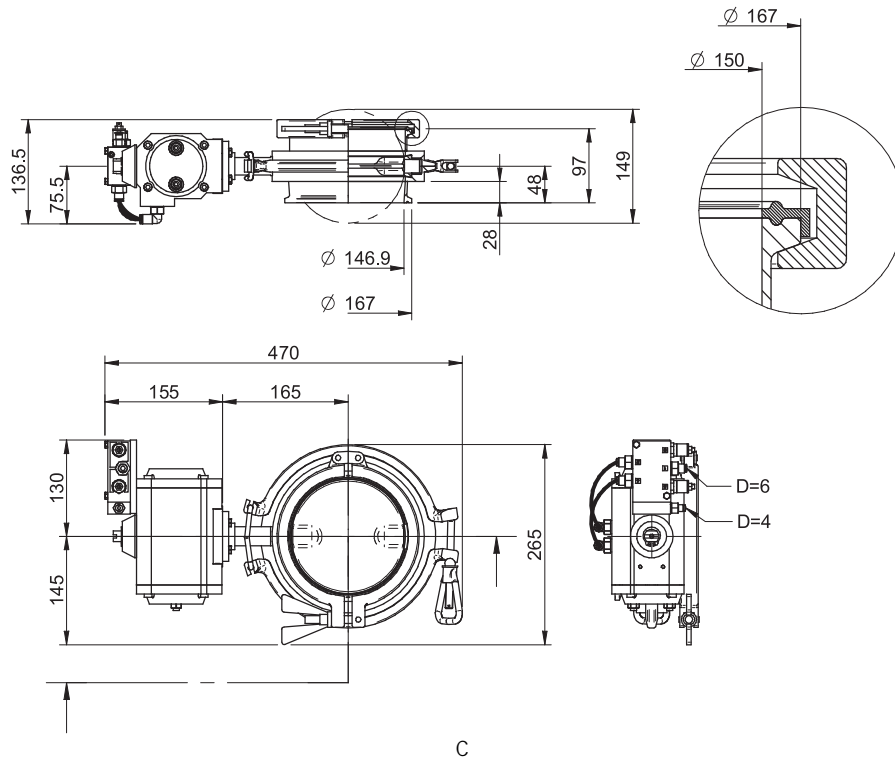
\*Depends on material choice.

### TECHNICAL DATA, SPECIFIC

Description	Unit	Value	
		0120944, 0120945	0120947, 0120948
Air consumption	l/s	0.71	1.40
Weight	kg	12	20

## ORDERING INFORMATION

Description	Art. No.
C Butterfly valve unit DN150, actuator in al, sealing in Q	0120944
C Butterfly valve unit DN150, actuator in al, sealing in EPDM	0120945
D Butterfly valve unit DN250, actuator in al, sealing in Q	0120947
D Butterfly valve unit DN250, actuator in al, sealing in EPDM	0120948



## BUTTERFLY VALVE UNIT, ACTUATOR IN STAINLESS STEEL



- ▶ Used for closing the inlet
- ▶ Hygienic design
- ▶ Fitted with actuator in stainless steel
- ▶ Fulfils the requirement of FDA

### TECHNICAL DATA

Description	Unit	Value
Feed pressure, max.	MPa	0.7
Feed pressure	MPa	0.4-0.16
Material		EN 1.4404, (EPDM/O*)
Temperature range	°C	0-60

\*Depends on material choice.

### TECHNICAL DATA, SPECIFIC

Description	Unit	Value	
		0120976, 0120977	0121081, 0121082
Weight	kg	6.3	7.5

## ORDERING INFORMATION

Description	Art. No.
C Butterfly valve unit 2", actuator in SS, sealing in Q	0120976
C Butterfly valve unit 2", actuator in SS, sealing in EPDM	0120977
D Butterfly valve unit 3", actuator in SS, sealing in Q	0121081
D Butterfly valve unit 3", actuator in SS, sealing in EPDM	0121082

