

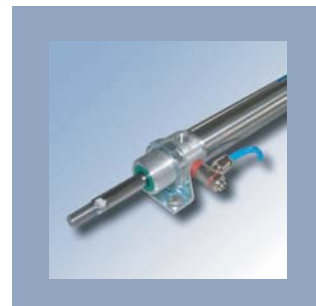


# Kruhové Valce

## Tech. informácie:

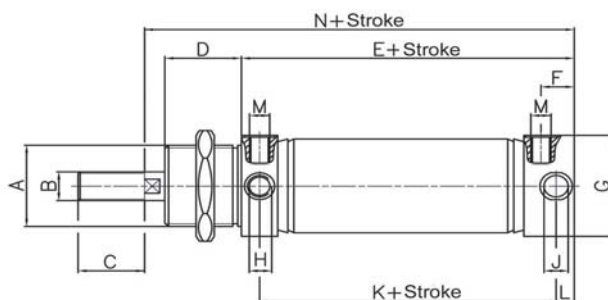
Priemer piestu: 32 - 100 mm  
 Priemer piestnice: 12 - 20  
 Zdvih: 20 - 600 mm  
 Funkcia: jednocinné (alebo s vratnou pružinou ako opcia)  
 Tlmenie: tlmenie na koncoch  
 max. pracovný tlak: 6 -10 Bar

Ostatné na vyžiadanie



	Priemer piestu	Priemer piestnice	zdvih	Magnet	tlmenie na koncoch
RD -	63 -		100 -	-	E
	32 = Ø 32	Ø 12	20 - 200	- = bez magnetu	- = bez
	40 = Ø 40	Ø 12	20 - 200	- = bez magnetu	- = bez
	50 = Ø 50	Ø 16	20 - 400	- = bez magnetu	- = bez / E = s
	63 = Ø 63	Ø 16	20 - 600	- = bez magnetu	- = bez / E = s
	80 = Ø 80	Ø 20	20 - 600	- = bez magnetu	- = bez / E = s
	100 = Ø 100	Ø 20	20 - 500	- = bez magnetu / <b>M</b> = s magnetom	- = bez / E = s

## Rozmery:



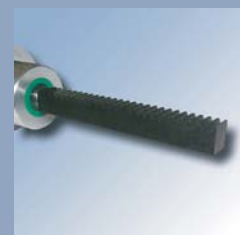
Ø	A	B	C	D	E	F	G	H	J	K	L	M	N
32	M30x1,5	M10	20	30	86	16,5	36	M8x1	8	69	8	G 1/8	124
40	M38x1,5	M12	24	35	89	16,5	44	M10x1,25	10	71	9	G 1/8	134
50	M45x1,5	M16	32	38	89	16,5	54	M12x1,5	12	71	9	G 1/8	139
63	M45x1,5	M16	32	38	95	10	69	M12x1,5	12	76	10	G 1/8	146
80	M45x1,5	M20x1,5	40	38	105	13	88	M16x1,5	16	81	13	G 1/4	159
100	M55x1,5	M20x1,5	40	38	114	14,5	109	M16x1,5	16	90	15	G1/4	170

## Opcia

Adjustable end position



Rack and pinion



further on request

The flyer is subject to technical alterations and printing mistakes.