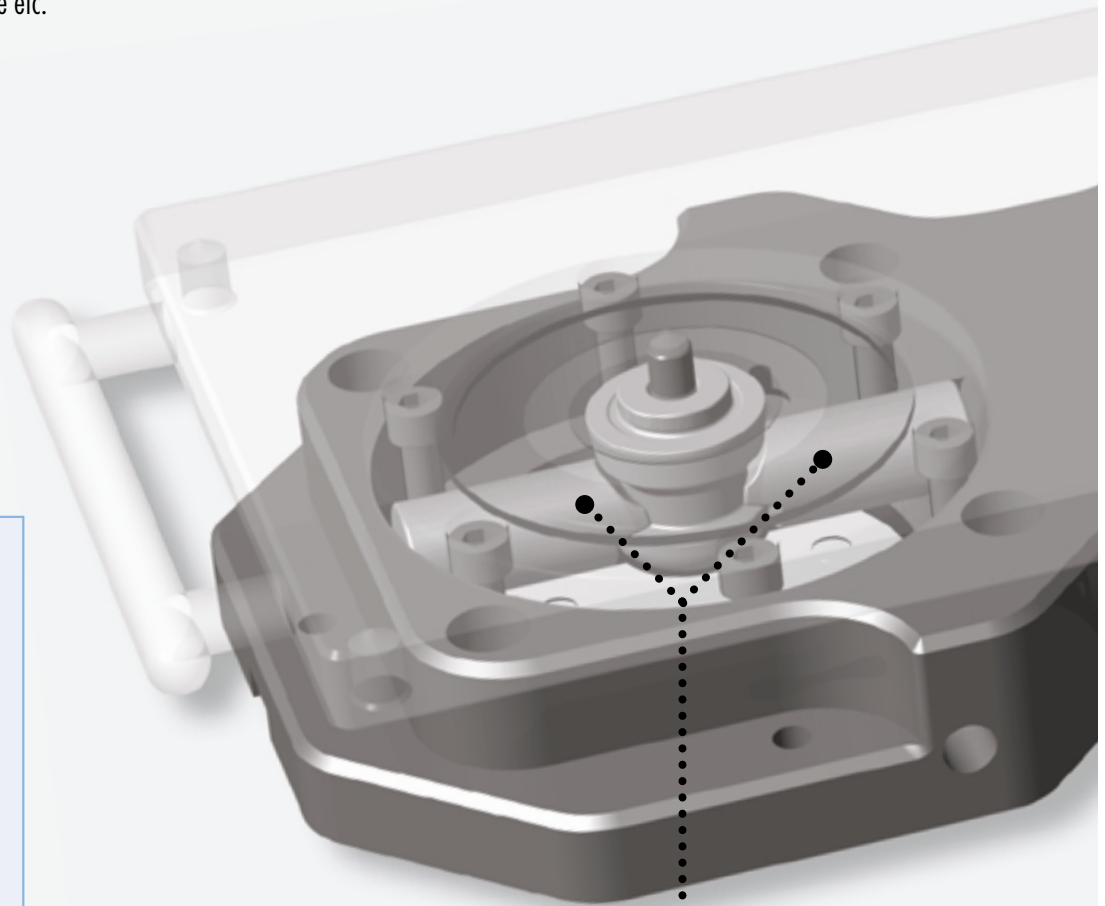


Das SCHUNK-UNILOCK Nullpunktspannsystem garantiert Ihnen folgende Nutzen:

- Pneumatische Betätigung bei 6 bar
- Mechanische selbsthemmende Verriegelung
- Spielfreie Kurzkegelzentrierung
- Massive spielfreie Palettenverdrehsicherung
- Auflagen- und Konusreinigung über Sperrluft
- Für wirtschaftlichen Einsatz, hochpräzise, universell, rationell und flexibel
- Keine Zusatzkosten durch Druckverstärkungselemente, Ventile etc.

# SCHUNK

N U L L P U N K T  
Z E R O - P O I N T



**Wirkprinzip:**  
zwangsgesteuert über Schräge

**Betätigung:**  
Druckluft gefiltert  
(10 µm) und geölt

**Druck:**  
min. 5 bar

**Temperaturbereich:**  
von 5°C bis 60°C

**Einbaulage:**  
beliebig

**Wartung:**  
wartungsfrei (geölte Luft)

**Lieferumfang:**  
umfangreiche Betriebs-,  
Wartungsanleitung und  
Herstellereklärung

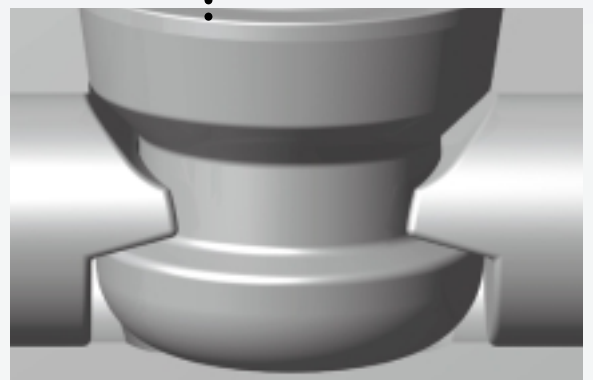
**Gewährleistung:**  
12 Monate ab Werk

**Spannung:**

- Selbsthemmung
- Verriegelung über Radialbolzen und Feder

**Clamping ring:**

- Self-locking
- Locking via radial pins and spring

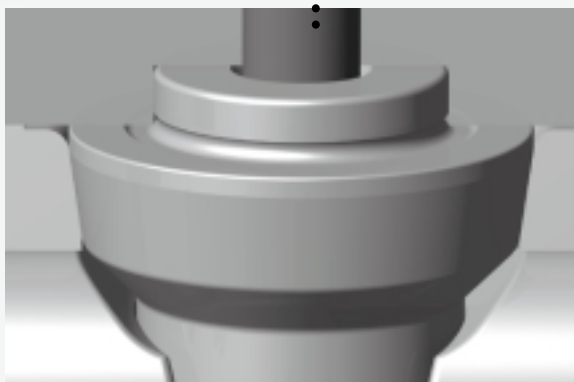
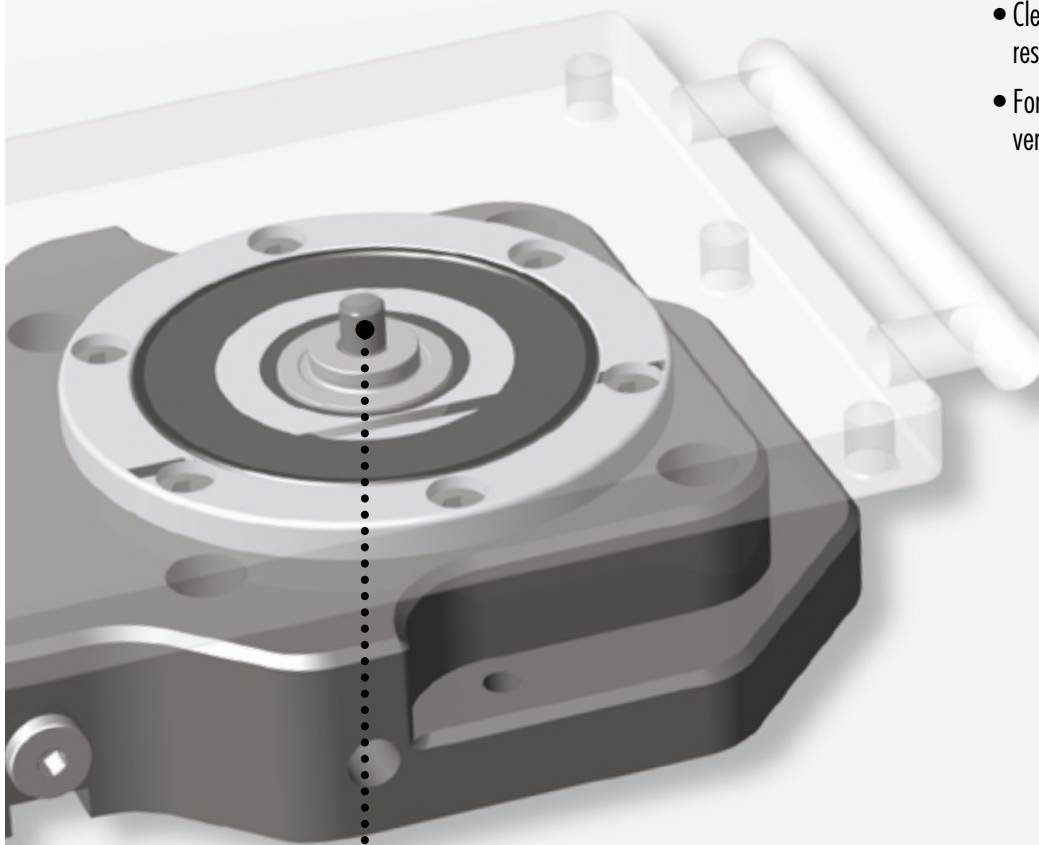


# UNILOCK

## SPANNSYSTEM CLAMPING SYSTEM

The SCHUNK-UNILOCK Zero-Point Clamping System offers the following advantages:

- Pneumatically actuated at 6 bars
- Mechanical self-locking system
- Short taper centering without scope
- Palette with stable anti-twist safety device without scope
- Cleaning of supports and conus via restricted air
- For an economic application: high precision, versatile application and flexible



### Zentrierung:

- über Kurzkegel
- Positionsgenauigkeit 0,005 mm

### Centering:

- via short taper
- Positioning accuracy 0,005 mm

**Principle of operation:**  
force guided via inclination

**Actuation:**  
compressed air filtered (10 µm) and lubricated

**Airpressure:**  
min. 5 bars

**Operating temperature:**  
from 5 °C to 60 °C  
(41 °F to 140 °F)

**Position of installation:**  
application dependant

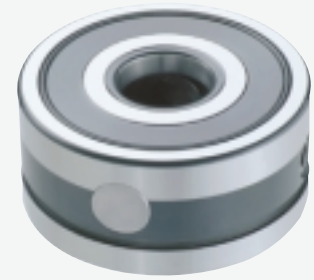
**Maintenance:**  
without maintenance (only lubricated air)

**Scope of delivery:**  
detailed operating manual, supplier's declaration

**Warranty:**  
12 months ex-works

# NSE 120

## Aufspannmodul/Einspannmodul\* Single Module for stationary use/ Integrated Assembly Module\*



\* Auch als Einbauspannmodul verwendbar, bei einer max. Einbautiefe von 18 mm

\* Can be also used as an integrated clamping module at a maximum mounting depth of 18 mm.

| Type    | Ident.-Nr. | Haltekraft (M10)*        | Haltekraft (M12)***        | Entriegelungsdruck | Entriegelungszeit | Masse  | Wiederholgenauigkeit |
|---------|------------|--------------------------|----------------------------|--------------------|-------------------|--------|----------------------|
| Type    | Id.-No.    | Tightening force (M10)** | Tightening force (M12)**** | Unlocking pressure | Unlocking time    | Mass   | Repeatability        |
| NSE 120 | 470 027    | 35 kN                    | 50 kN                      | 6 bar              | 0.2 s             | 3.7 kg | < 0.005 mm           |

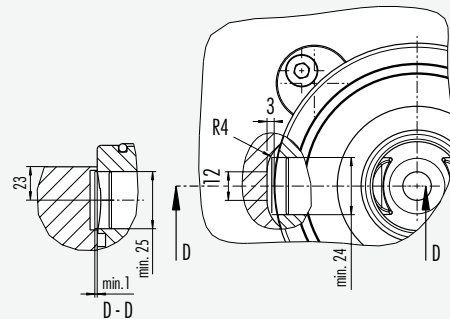
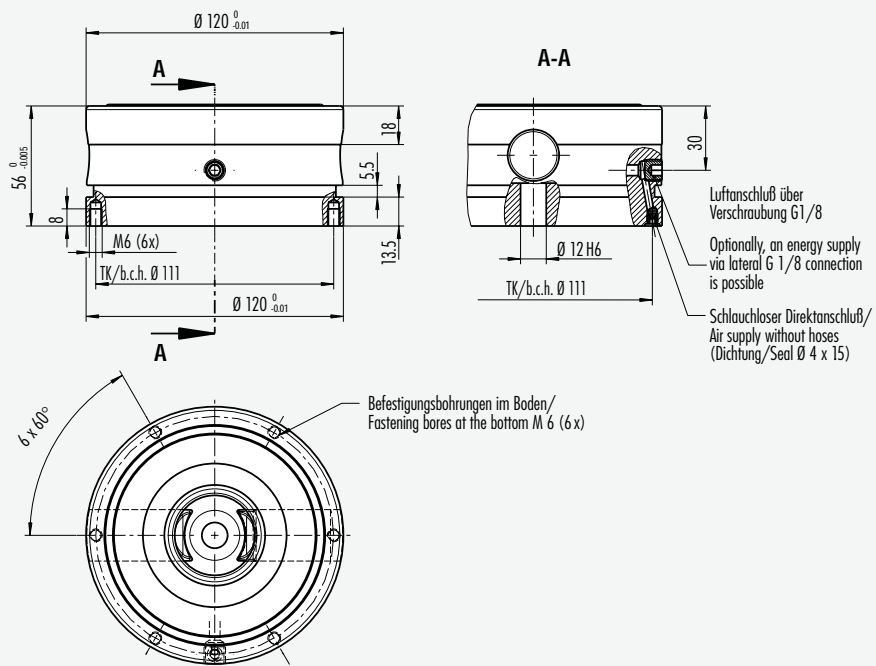
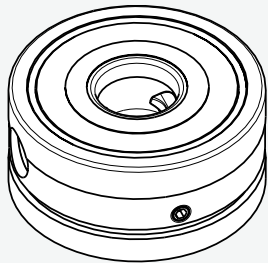
\* Haltekraft mit Zyl. Schraube M10 - DIN 912/12.9

\*\*\* Haltekraft mit Zyl. Schraube M12 - DIN 912/12.9

\*\* Tightening force with cylindrical head screw M10 - DIN 912/12.9

\*\*\*\* Tightening force with cylindrical head screw M12 - DIN 912/12.9

### 3D-Ansicht 3D-View



# NSH 120

## Aufbauspannmodul manuell betätigt Assembly Module manually actuated



| Type    | Ident.-Nr. | Haltekraft (M10)*        | Haltekraft (M12)***        | Entriegelungsdruck | Entriegelungszeit | Masse  | Wiederholgenauigkeit |
|---------|------------|--------------------------|----------------------------|--------------------|-------------------|--------|----------------------|
| Type    | Id.-No.    | Tightening force (M10)** | Tightening force (M12)**** | Unlocking pressure | Unlocking time    | Mass   | Repeatability        |
| NSH 120 | 470 028    | 35 kN                    | 50 kN                      | -                  | -                 | 3.7 kg | < 0.005 mm           |

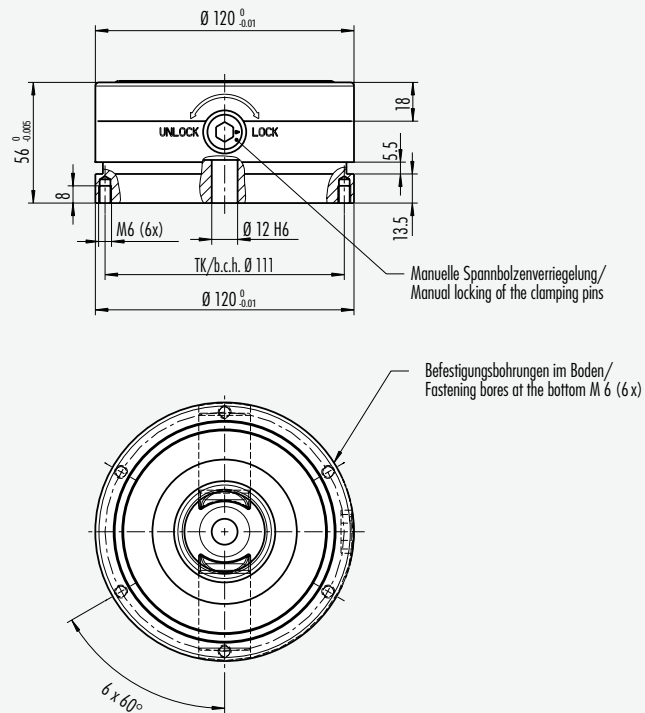
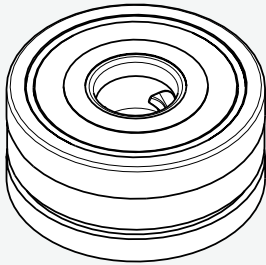
\* Haltekraft mit Zyl. Schraube M10 - DIN 912/12.9

\*\*\* Haltekraft mit Zyl. Schraube M12 - DIN 912/12.9

\*\* Tightening force with cylindrical head screw M10 - DIN 912/12.9

\*\*\*\* Tightening force with cylindrical head screw M12 - DIN 912/12.9

### 3D-Ansicht 3D-View



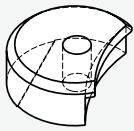
# BRR 50-30/50-40/50-50

## Briden Clamping Pins

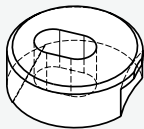


| Type      | Ident.-Nr. | Werkstoff   | Masse   | Ausführung        |
|-----------|------------|-------------|---------|-------------------|
| Type      | Id.-No.    | Material    | Mass    | Design            |
| BRR 50-30 | 470 029    | Stahl/Steel | 0.25 kg | Standard/Standard |
| BRR 50-40 | 470 030    | Stahl/Steel | 0.25 kg | Standard/Standard |
| BRR 50-50 | 470 031    | Stahl/Steel | 0.25 kg | Standard/Standard |

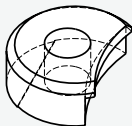
### 3D-Ansichten 3D-Views



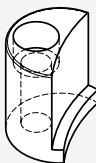
BRR 50-30



BRR 50-40

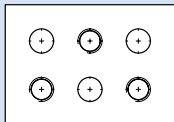


BRR 50-50



BRR 32

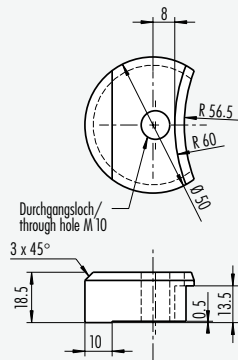
alternierend/alternating



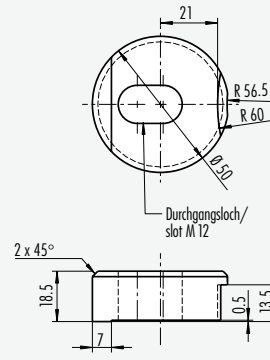
koaxial/coaxial



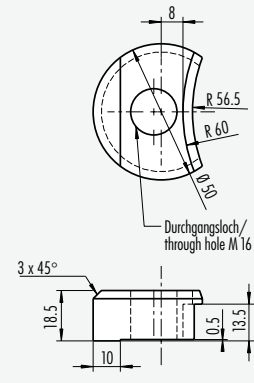
BRR 50-30



BRR 50-40

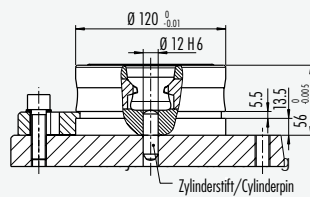


BRR 50-50

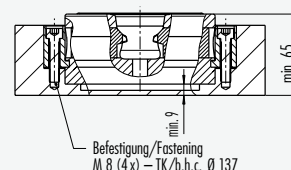


### Befestigungsmöglichkeiten für NSE 120 und NSH 120/ Fastening possibilities for NSE 120 and NSH 120

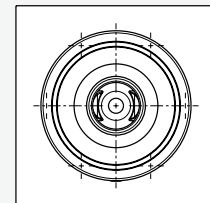
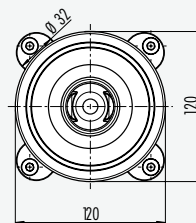
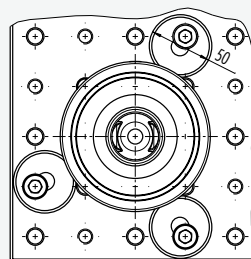
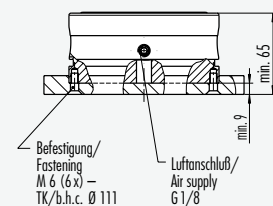
NSE 120 / NSH 120



NSE 120



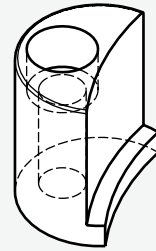
NSE 120 / NSH 120



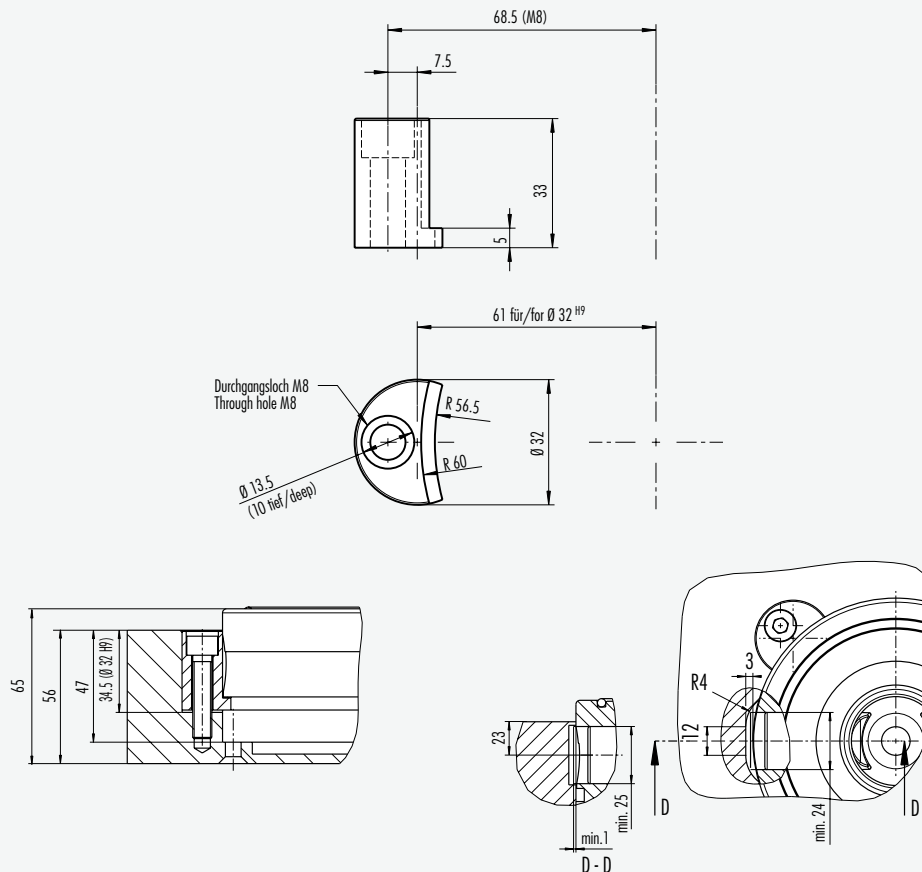
|                          | Lochraster 30mm<br>Grid plate 30mm |                     | Lochraster 40mm<br>Grid plate 40mm |                     | Lochraster 50mm<br>Grid plate 50mm |                     |
|--------------------------|------------------------------------|---------------------|------------------------------------|---------------------|------------------------------------|---------------------|
|                          |                                    |                     |                                    |                     |                                    |                     |
| Paßbohrung<br>Dowel hole | Ø 10 F7                            | Ø 10 F7             | Ø 12 F7                            | Ø 12 F7             | Ø 16 F7                            | Ø 16 F7             |
| Gewinde<br>Thread        | M10                                | M10                 | M12                                | M12                 | M16                                | M16                 |
| Anordnung<br>Arrangement | alternierend/<br>alternating       | koaxial/<br>coaxial | alternierend/<br>alternating       | koaxial/<br>coaxial | alternierend/<br>alternating       | koaxial/<br>coaxial |
| Stichmaße<br>Dimension   | 120                                | 120                 | 160                                | 120                 | -                                  | 150                 |
|                          | 180                                | 150                 | 240                                | 160                 | -                                  | 200                 |
|                          | 240                                | 180                 | 320                                | 200                 | -                                  | 250                 |
|                          |                                    | 210                 |                                    | 240                 | -                                  |                     |

# BRR 32

## Briden Clamping Pins

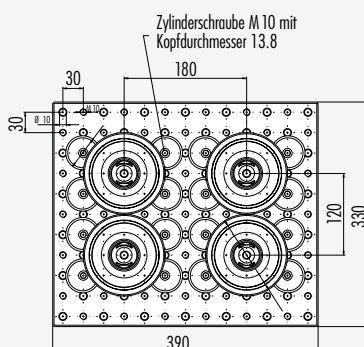


| Type   | Ident.-Nr. | Werkstoff     | Masse   | Ausführung          |
|--------|------------|---------------|---------|---------------------|
| Type   | Id.-No.    | Material      | Mass    | Design              |
| BRR 32 | 470 032    | Stahl / Steel | 0.10 kg | Standard / Standard |

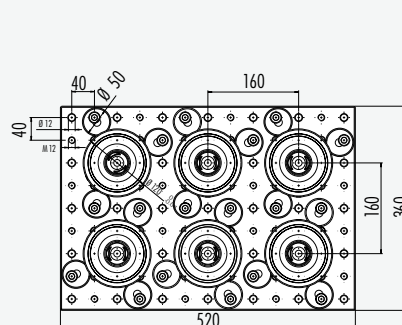


## Befestigungsmöglichkeiten auf Rasterplatten Fastening possibilities on grid plates

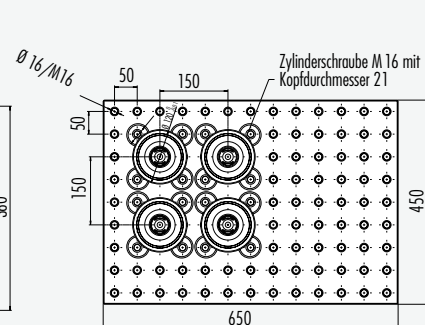
Raster/Grid 30



Raster/Grid 40



Raster/Grid 50



# NSE 138

## Einbauspannmodul Assembly Module



| Type    | Ident.-Nr. | Haltekraft (M10)*        | Haltekraft (M12)***        | Entriegelungsdruck | Entriegelungszeit | Masse  | Wiederholgenauigkeit |
|---------|------------|--------------------------|----------------------------|--------------------|-------------------|--------|----------------------|
| Type    | Id.-No.    | Tightening force (M10)** | Tightening force (M12)**** | Unlocking pressure | Unlocking time    | Mass   | Repeatability        |
| NSE 138 | 470 001    | 35 kN                    | 50 kN                      | 6 bar              | 0.2 s             | 4.5 kg | < 0.005 mm           |

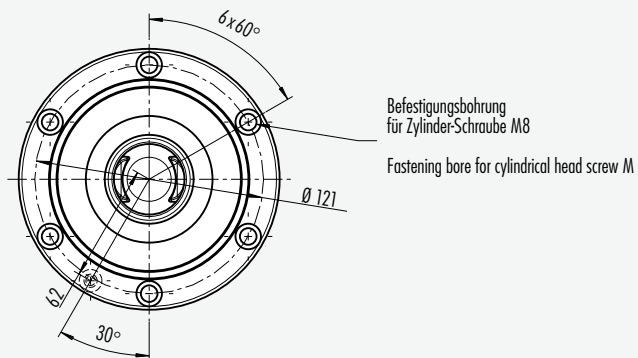
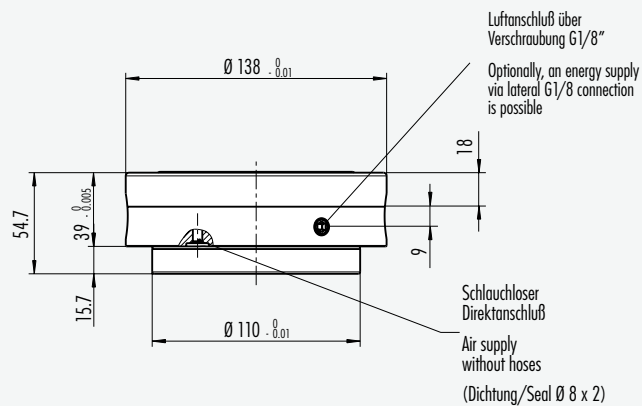
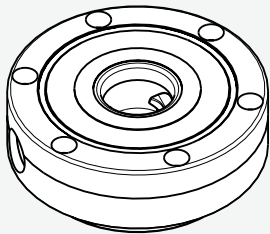
\* Haltekraft mit Zyl. Schraube M10 - DIN 912/12.9

\*\*\* Haltekraft mit Zyl. Schraube M12 - DIN 912/12.9

\*\* Tightening force with cylindrical head screw M10 - DIN 912/12.9

\*\*\*\* Tightening force with cylindrical head screw M12 - DIN 912/12.9

### 3D-Ansicht 3D-View



### Anwendung:

Für den direkten Einbau im Maschinentisch.

... als Schnittstelle zur Erstellung von kundenspezifischen Aufspannplatten mit mehreren Spannstellen

... Einsatz in Winkeln, Paletten oder Spanntürmen.

### Application:

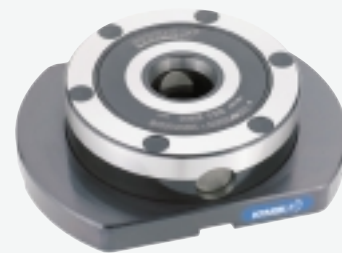
For direct connection onto the machine table at the interface.

... for manufacturing of special clamping plates with several clamping areas

... application in angular components, pallets or clamping towers.

# NSL 150

## Einfache Spannstation Single Module for stationary use



| Type    | Ident.-Nr. | Haltekraft (M10)*        | Haltekraft (M12)***        | Entriegelungsdruck | Entriegelungszeit | Masse | Wiederholgenauigkeit |
|---------|------------|--------------------------|----------------------------|--------------------|-------------------|-------|----------------------|
| Type    | Id.-No.    | Tightening force (M10)** | Tightening force (M12)**** | Unlocking pressure | Unlocking time    | Mass  | Repeatability        |
| NSL 150 | 470 045    | 35 kN                    | 50 kN                      | 6 bar              | 0.2 s             | 7 kg  | < 0.005 mm           |

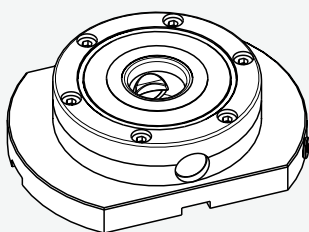
\* Haltekraft mit Zyl. Schraube M10 - DIN 912/12.9

\*\*\* Haltekraft mit Zyl. Schraube M12 - DIN 912/12.9

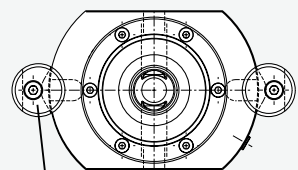
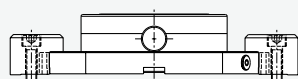
\*\* Tightening force with cylindrical head screw M10 - DIN 912/12.9

\*\*\*\* Tightening force with cylindrical head screw M12 - DIN 912/12.9

### 3D-Ansicht 3D-View



### Befestigungsvarianten/ Fastening possibilities



### BRR 50 (2x)

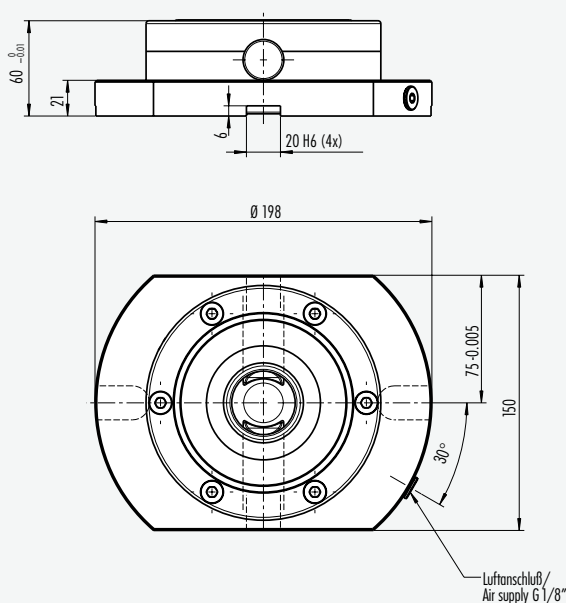
Ident.-Nr./Id.-No. 470 020

### Hinweis:

2 Stück Befestigungsbriden Type BRR 50 sind im Lieferumfang enthalten.

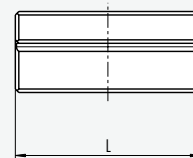
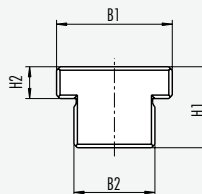
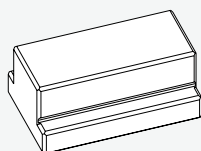
### Note:

2 pcs. clamping pins Type BRR 50 are comprised in delivery.



### Loose Nutensteine / T-Nuts DIN 6323

| Type      | Ident.-Nr. | B1    | B2    | H1    | H2     | L     | Masse    |
|-----------|------------|-------|-------|-------|--------|-------|----------|
| Type      | Id.-No.    |       |       |       |        |       | Mass     |
| NST 20/12 | 470 200    | 20 mm | 12 mm | 14 mm | 5.5 mm | 32 mm | 0.050 kg |
| NST 20/14 | 470 201    | 20 mm | 14 mm | 14 mm | 5.5 mm | 32 mm | 0.055 kg |
| NST 20/16 | 470 202    | 20 mm | 16 mm | 14 mm | 5.5 mm | 32 mm | 0.060 kg |
| NST 20/18 | 470 203    | 20 mm | 18 mm | 14 mm | 5.5 mm | 32 mm | 0.065 kg |



### Anwendung:

Für den Aufbau auf dem Maschinentisch zur Realisierung von kundenspezifischen Stichmaßen. Kleinstes Stichmaß 150 mm. Die Einbaulage ist beliebig und kann einzeln oder mehrfach eingesetzt werden.

### Application:

For mounting on the machining table according to customized gauge for bore holes. The smallest bore hole is 150 mm. The mounting position is not specified and can be applied individually or for multiple purposes.

# NSD 150

## Einfache Spannstation Single Module for stationary use



| Type    | Ident.-Nr. | Haltekraft (M10)*        | Haltekraft (M12)***        | Entriegelungsdruck | Entriegelungszeit | Masse  | Wiederholgenauigkeit |
|---------|------------|--------------------------|----------------------------|--------------------|-------------------|--------|----------------------|
| Type    | Id.-No.    | Tightening force (M10)** | Tightening force (M12)**** | Unlocking pressure | Unlocking time    | Mass   | Repeatability        |
| NSD 150 | 470 044    | 35 kN                    | 50 kN                      | 6 bar              | 0.2 s             | 8.1 kg | < 0.005 mm           |

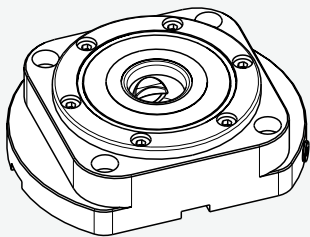
\* Haltekraft mit Zyl. Schraube M10 - DIN 912/12.9

\*\* Haltekraft mit Zyl. Schraube M12 - DIN 912/12.9

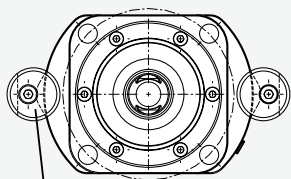
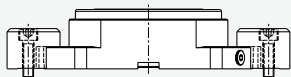
\*\* Tightening force with cylindrical head screw M10 - DIN 912/12.9

\*\*\*\* Tightening force with cylindrical head screw M12 - DIN 912/12.9

### 3D-Ansicht 3D-View



### Befestigungsvarianten/ Fastening possibilities



### BRR 50 (2x)

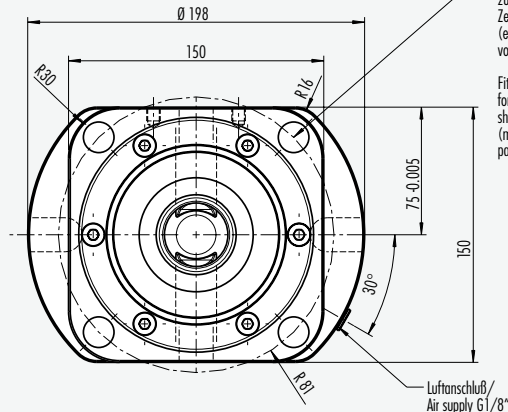
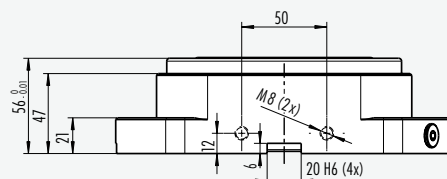
Ident.-Nr./Id.-No. 470 020

### Hinweis:

2 Stück Befestigungsbriden Type BRR 50 sind im Lieferumfang enthalten.

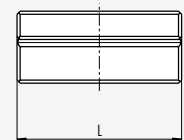
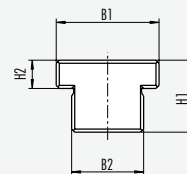
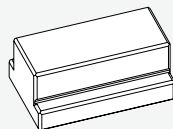
### Note:

2 pcs. clamping pins Type BRR 50 are comprised in delivery.



### Loose Nutensteine / T-Nuts DIN 6323

| Type      | Ident.-Nr. | B1    | B2    | H1    | H2     | L     | Masse    |
|-----------|------------|-------|-------|-------|--------|-------|----------|
| Type      | Id.-No.    |       |       |       |        |       | Mass     |
| NST 20/12 | 470 200    | 20 mm | 12 mm | 14 mm | 5.5 mm | 32 mm | 0.050 kg |
| NST 20/14 | 470 201    | 20 mm | 14 mm | 14 mm | 5.5 mm | 32 mm | 0.055 kg |
| NST 20/16 | 470 202    | 20 mm | 16 mm | 14 mm | 5.5 mm | 32 mm | 0.060 kg |
| NST 20/18 | 470 203    | 20 mm | 18 mm | 14 mm | 5.5 mm | 32 mm | 0.065 kg |



### Anwendung:

Für den Aufbau auf dem Maschinentisch zur Realisierung von kundenspezifischen Stichmaßen. Kleinstes Stichmaß 150 mm. Die Einbaulage ist beliebig und kann einzeln oder mehrfach eingesetzt werden. Die radiale Ausrichtung ist über die Zentrierkalottenbüchse Type ZKA 12 möglich.

### Application:

For mounting on the machining table according to customized gauge for bore holes. The smallest bore hole is 150 mm. The mounting position is not specified and can be applied individually or for multiple purposes. The radial orientation can be adjusted via the centering sleeve Type ZKA 12.

# NSM 170

## Einzelspannstation Mono Clamping Module



| Type    | Ident.-Nr. | Haltekraft (M10) 1)      | Haltekraft (M12) 3)       | Entriegelungsdruck | Entriegelungszeit | Masse  | Wiederholgenauigkeit |
|---------|------------|--------------------------|---------------------------|--------------------|-------------------|--------|----------------------|
| Type    | Id.-No.    | Tightening force (M10)** | Tightening force (M12)*** | Unlocking pressure | Unlocking time    | Mass   | Repeatability        |
| NSM 170 | 470 000    | 35 kN                    | 50 kN                     | 6 bar              | 0.2 s             | 7.5 kg | < 0.005 mm           |

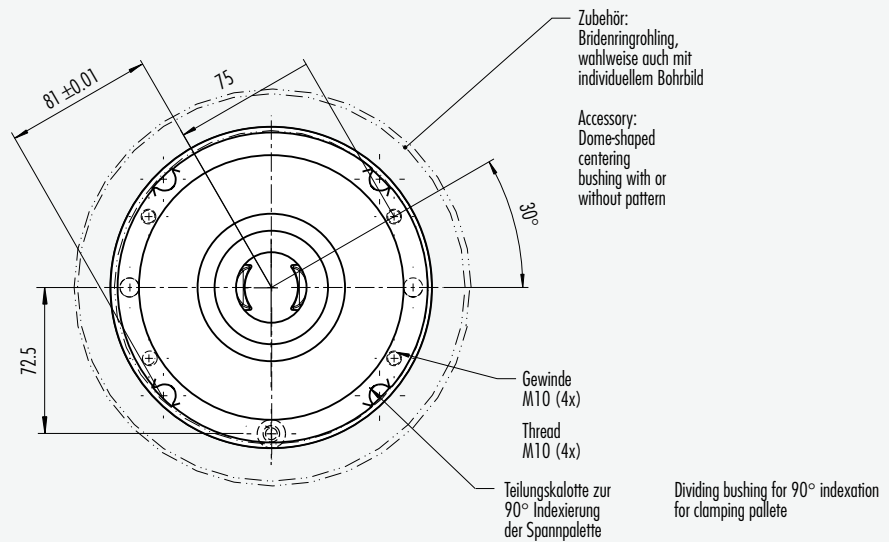
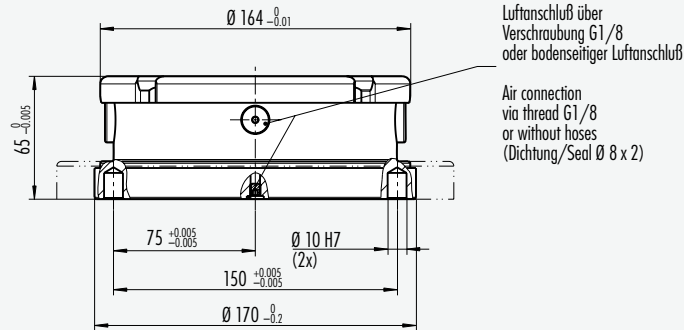
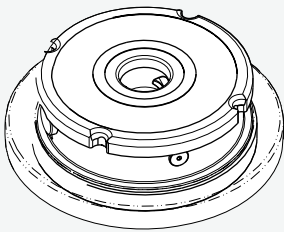
\*\* Haltekraft mit Zyl. Schraube M10 - DIN 912/12.9

\*\*\* Haltekraft mit Zyl. Schraube M12 - DIN 912/12.9

\*\* Tightening force with cylindrical head screw M10 - DIN 912/12.9

\*\*\* Tightening force with cylindrical head screw M12 - DIN 912/12.9

### 3D-Ansicht 3D-View



#### Hinweis:

Interne Luftdurchführung (2-fach) ist auf Anfrage möglich.

#### Note:

Internal air supply (2-fold) available upon special request.

#### Anwendung:

Vorwiegend als Einzelspannmodul auf einem Teilapparat, auf Kleinpaletten oder direkt auf dem Maschinentisch.

#### Application:

Mostly used as a single clamping module on a dividing attachment, on small pallets or directly on a machine table.

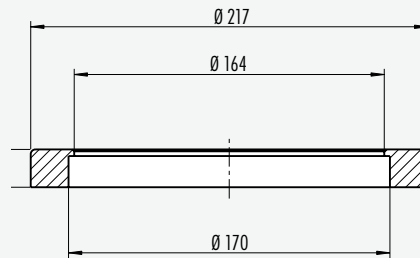
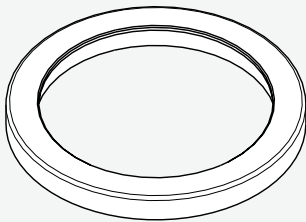
# BRR 217

## Bridenring Fastening Ring

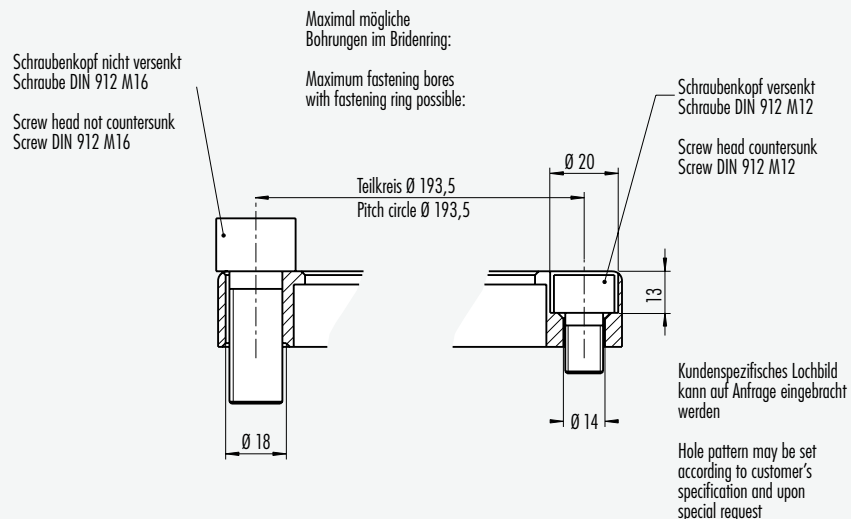


| Type    | Ident.-Nr. | Masse  |
|---------|------------|--------|
| Type    | Id.-No.    | Mass   |
| BRR 217 | 470 004    | 2.7 kg |

### 3D-Ansicht 3D-View



### Befestigungsvarianten Fastening possibilities



#### Hinweis:

Befestigungslochbild wird kundenseitig erstellt.

#### Note:

Hole pattern for fastening will be adjusted by the customer

#### Anwendung:

Der Bridenring-Rohling ist das Befestigungselement für die Mono-Spannstation Type NSM 170. Das Befestigungslochbild wird kundenseitig nachgearbeitet (Beachte Skizze).

#### Application:

The blank of a fastening ring is a fastening element for mono clamping module Type NSM 170. The fastening hole pattern, can be remachined by the customer (Please consider the sketch).

# NSL 200

## Doppelte Spannstation Double Module for stationary use



| Type    | Ident.-Nr. | Haltekraft (M10)*        | Haltekraft (M12)***        | Entriegelungsdruck | Entriegelungszeit | Masse | Wiederholgenauigkeit |
|---------|------------|--------------------------|----------------------------|--------------------|-------------------|-------|----------------------|
| Type    | Id.-No.    | Tightening force (M10)** | Tightening force (M12)**** | Unlocking pressure | Unlocking time    | Mass  | Repeatability        |
| NSL 200 | 470 003    | 35 kN                    | 50 kN                      | 6 bar              | 0.2 s             | 17 kg | < 0.005 mm           |

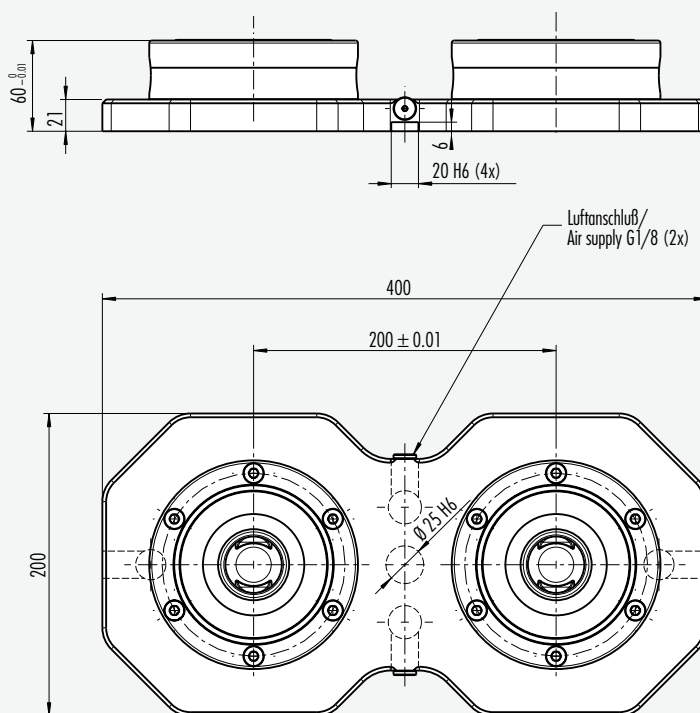
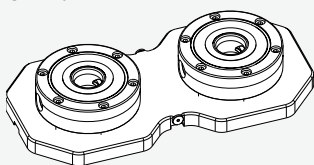
\* Haltekraft mit Zyl. Schraube M10 - DIN 912/12.9

\*\*\* Haltekraft mit Zyl. Schraube M12 - DIN 912/12.9

\*\* Tightening force with cylindrical head screw M10 - DIN 912/12.9

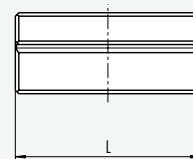
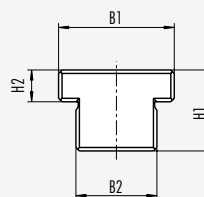
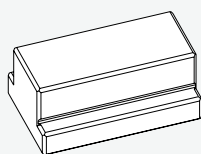
\*\*\*\* Tightening force with cylindrical head screw M12 - DIN 912/12.9

### 3D-Ansicht 3D-View



### Lose Nutensteine / T-Nuts DIN 6323

| Type      | Ident.-Nr. | B1    | B2    | H1    | H2     | L     | Masse    |
|-----------|------------|-------|-------|-------|--------|-------|----------|
| Type      | Id.-No.    |       |       |       |        |       | Mass     |
| NST 20/12 | 470 200    | 20 mm | 12 mm | 14 mm | 5.5 mm | 32 mm | 0.050 kg |
| NST 20/14 | 470 201    | 20 mm | 14 mm | 14 mm | 5.5 mm | 32 mm | 0.055 kg |
| NST 20/16 | 470 202    | 20 mm | 16 mm | 14 mm | 5.5 mm | 32 mm | 0.060 kg |
| NST 20/18 | 470 203    | 20 mm | 18 mm | 14 mm | 5.5 mm | 32 mm | 0.065 kg |



#### Hinweis:

4 Stück Befestigungsbriden Type BRR 50 sind im Lieferumfang enthalten.

#### Note:

4 pcs. clamping pins Type BRR 50 are comprised in delivery.

#### Anwendung:

Nur für Doppel- oder Mehrfachspannpaletten geeignet.

#### Application:

Suitable for double- or multiple clamping pallets only.

# NSD 200

## Doppelte Spannstation Double Module for stationary use

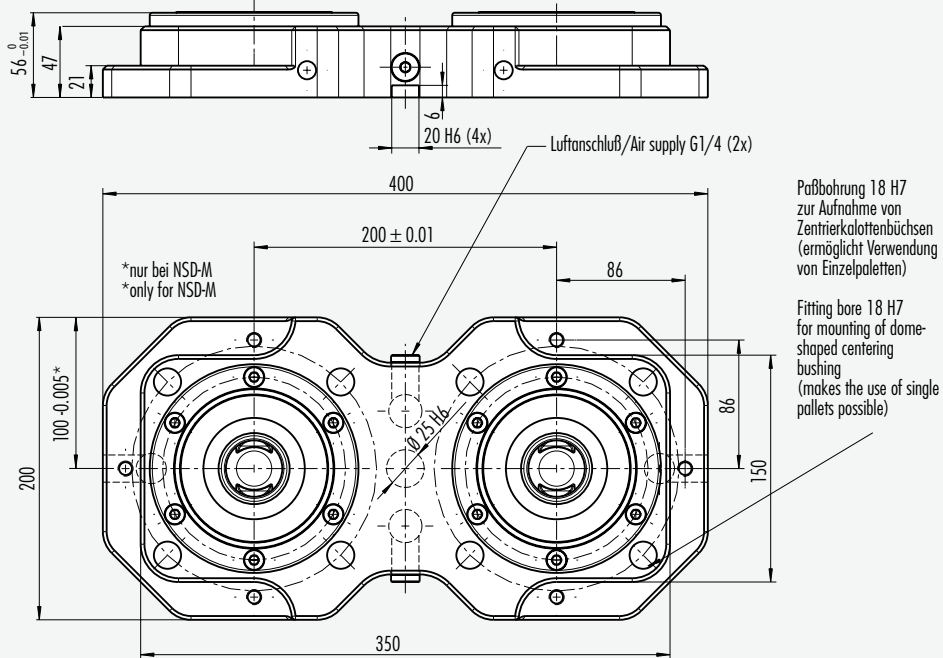
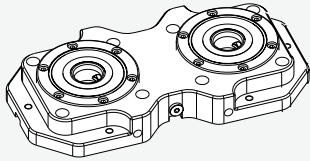


| Type      | Ident.-Nr. | Haltekraft (M10)*   | Haltekraft (M12)**       | Entriegelungsdruck | Entriegelungszeit | Masse | Wiederholgenauigkeit |
|-----------|------------|---|--------------------------|--------------------|-------------------|-------|----------------------|
| Type      | Id.-No.    | Tightening force (M10)**  | Tightening force (M12)** | Unlocking pressure | Unlocking time    | Mass  | Repeatability        |
| NSD 200   | 470 002    | 35 kN   | 50 kN                    | 6 bar              | 0.2 s             | 21 kg | < 0.005 mm           |
| NSD-M 200 | 470 051    | Seitlich überschliffen, um mehrere Platten aneinanderzukoppeln<br>Ground for multiple module applications |                          |                    |                   |       |                      |

\* Haltekraft mit Zyl. Schraube M10 - DIN 912/12.9  
\*\* Haltekraft mit Zyl. Schraube M12 - DIN 912/12.9

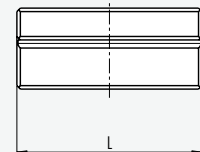
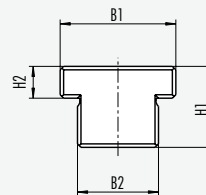
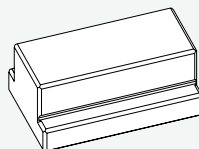
\*\* Tightening force with cylindrical head screw M10 - DIN 912/12.9  
\*\*\*\* Tightening force with cylindrical head screw M12 - DIN 912/12.9

### 3D-Ansicht 3D-View



### Loose Nutensteine / T-Nuts DIN 6323

| Type      | Ident.-Nr. | B1    | B2    | H1    | H2     | L     | Masse    |
|-----------|------------|-------|-------|-------|--------|-------|----------|
| Type      | Id.-No.    |       |       |       |        |       | Mass     |
| NST 20/12 | 470 200    | 20 mm | 12 mm | 14 mm | 5.5 mm | 32 mm | 0.050 kg |
| NST 20/14 | 470 201    | 20 mm | 14 mm | 14 mm | 5.5 mm | 32 mm | 0.055 kg |
| NST 20/16 | 470 202    | 20 mm | 16 mm | 14 mm | 5.5 mm | 32 mm | 0.060 kg |
| NST 20/18 | 470 203    | 20 mm | 18 mm | 14 mm | 5.5 mm | 32 mm | 0.065 kg |



#### Hinweis:

4 Stück Befestigungsbriden Type BRR 50 sind im Lieferumfang enthalten.

#### Note:

4 pcs. clamping pins Type BRR 50 are comprised in delivery.

#### Anwendung:

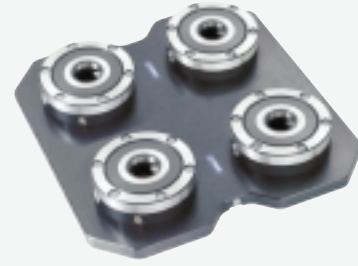
Stabile Ausführung für Doppel- und für Einzel-Spannpaletten für radiale Ausrichtung über die Zentrierkalottenbüchse.

#### Application:

Stable design for double- or mono clamping pallets for radial alignment via dome-shaped centering bushing.

# NSL 400

## 4-fach Spannstation 4 way chuck module



| Type    | Ident.-Nr. | Haltekraft (M10)*        | Haltekraft (M12)***        | Entriegelungsdruck | Entriegelungszeit | Masse | Wiederholgenauigkeit |
|---------|------------|--------------------------|----------------------------|--------------------|-------------------|-------|----------------------|
| Type    | Id.-No.    | Tightening force (M10)** | Tightening force (M12)**** | Unlocking pressure | Unlocking time    | Mass  | Repeatability        |
| NSL 400 | 470 048    | 35 kN                    | 50 kN                      | 6 bar              | 0.2 s             | 34 kg | < 0.005 mm           |

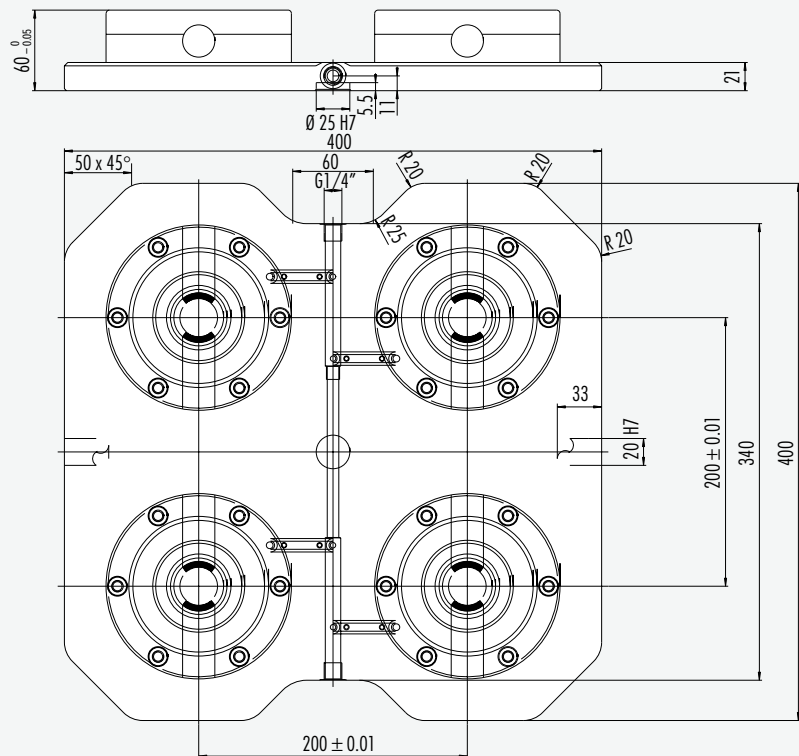
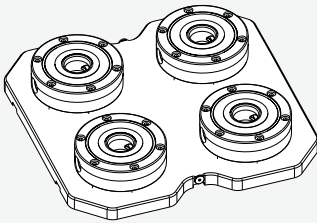
\* Haltekraft mit Zyl. Schraube M10 - DIN 912/12.9

\*\*\* Haltekraft mit Zyl. Schraube M12 - DIN 912/12.9

\*\* Tightening force with cylindrical head screw M10 - DIN 912/12.9

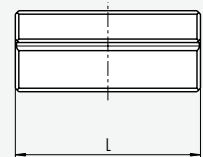
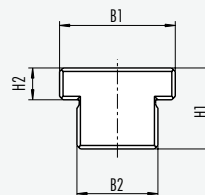
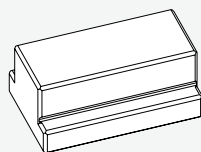
\*\*\*\* Tightening force with cylindrical head screw M12 - DIN 912/12.9

### 3D-Ansicht 3D-View



### Lose Nutensteine / T-Nuts DIN 6323

| Type      | Ident.-Nr. | B1    | B2    | H1    | H2     | L     | Masse    |
|-----------|------------|-------|-------|-------|--------|-------|----------|
| Type      | Id.-No.    |       |       |       |        |       | Mass     |
| NST 20/12 | 470 200    | 20 mm | 12 mm | 14 mm | 5.5 mm | 32 mm | 0.050 kg |
| NST 20/14 | 470 201    | 20 mm | 14 mm | 14 mm | 5.5 mm | 32 mm | 0.055 kg |
| NST 20/16 | 470 202    | 20 mm | 16 mm | 14 mm | 5.5 mm | 32 mm | 0.060 kg |
| NST 20/18 | 470 203    | 20 mm | 18 mm | 14 mm | 5.5 mm | 32 mm | 0.065 kg |



#### Hinweis:

4 Stück Befestigungsbriden Type BRR 50 sind im Lieferumfang enthalten.

#### Note:

4 pcs. clamping pins Type BRR 50 are comprised in delivery.

#### Anwendung:

Nur für Doppel- oder Mehrfachspannpaletten geeignet.

#### Application:

Suitable for double- or multiple clamping pallets only.

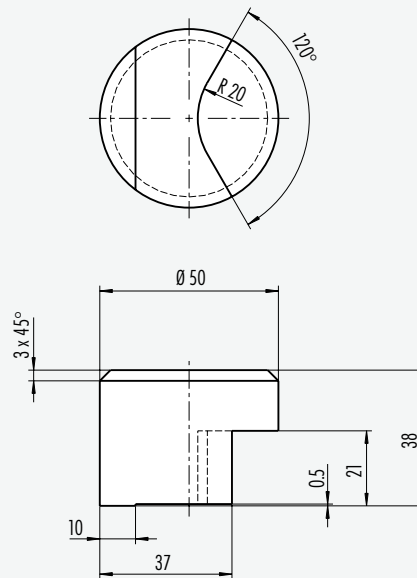
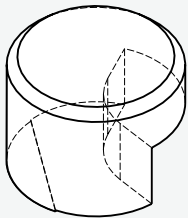
# BRR 50

## Bridenrohling Blanks of Clamping Pins

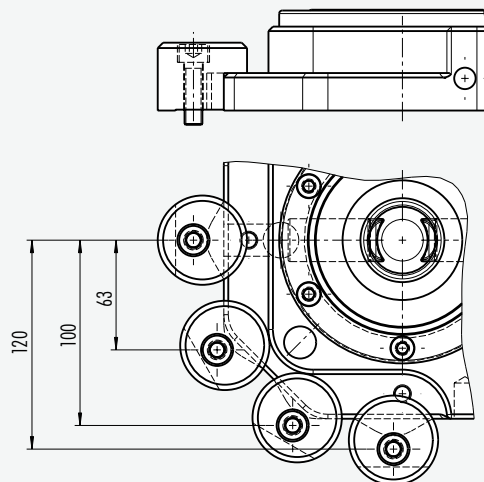


| Type   | Ident.-Nr. | Werkstoff   | Masse  | Ausführung |
|--------|------------|-------------|--------|------------|
| Type   | Id.-No.    | Material    | Mass   | Design     |
| BRR 50 | 470 020    | Stahl/Steel | 0.5 kg | Standard   |

### 3D-Ansicht 3D-View



### Befestigungsvarianten Fastening possibilities



### Anwendung:

Bridenrohlinge sind flexible Befestigungselemente für die Doppel-Spannstationen Type NSD-/NSL 200. Die Befestigungsbohrung wird kundenseitig nachgearbeitet (Beachte Skizze).

### Application:

Blanks of clamping pins are versatile fastening elements for double clamping stations Type NSD-/NSL 200. The fastening bores may be remachined by the customer himself (Please consider the sketch).

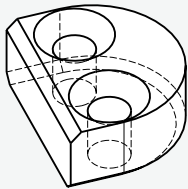
# VBS 50

## Verbindungsstück Connection Piece

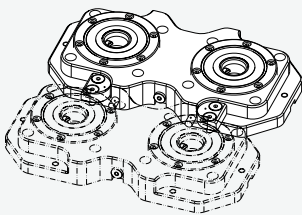


| Type   | Ident.-Nr. | Werkstoff     | Masse  | Ausführung |
|--------|------------|---------------|--------|------------|
| Type   | Id.-No.    | Material      | Mass   | Design     |
| VBS 50 | 470 021    | Stahl / Steel | 0.7 kg | Standard   |

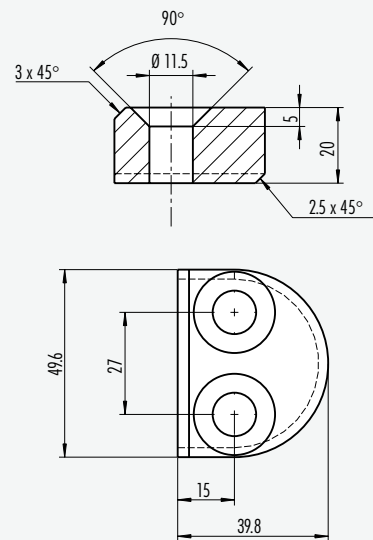
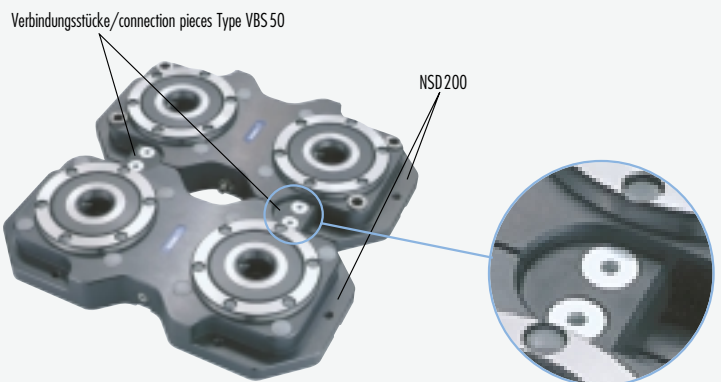
3D-Ansicht  
3D-View



3D-Ansicht  
3D-View



Montagemöglichkeit/  
Assembly possibilities



### Anwendung:

Die Verbindungsstücke sind Befestigungselemente zur Verbindung von mehreren doppelten Spannstationen Type NSD 200 (Beachte Skizze).

Der Lieferumfang enthält:

2 Verbindungsstücke, 4 Senkschrauben, 2 Zylinderstifte Ø12 m6 x 35 mm

### Application:

The connection pieces are fastening elements for connecting double modules for stationary use Type NSD 200 (please consider the sketch).

Delivery comprises:

2 connection pieces, 4 countersunk screws, 2 cylinder pins  
Ø12 m6 x 35 mm

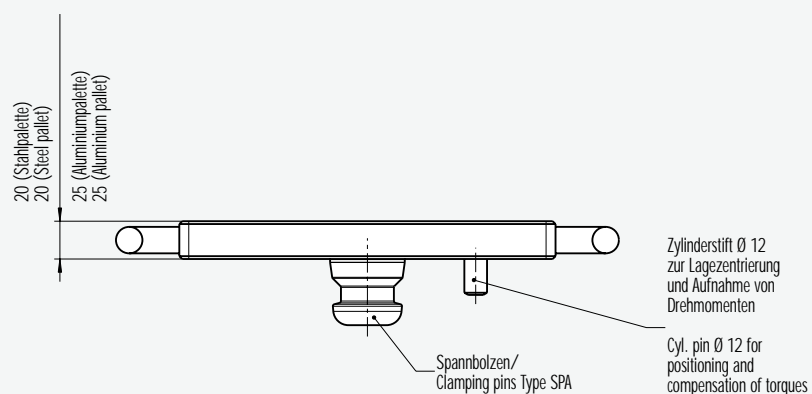
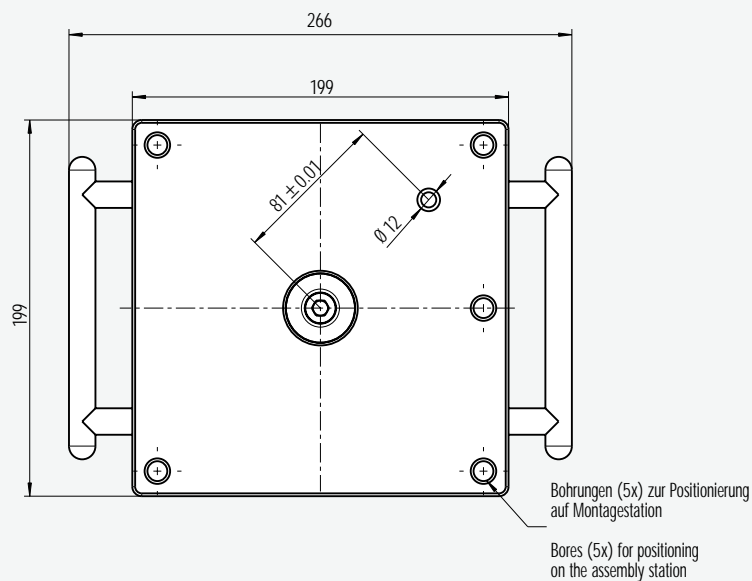
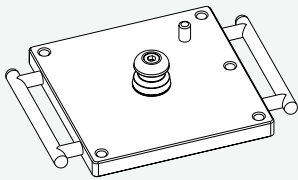
# PAL S 199x199/PAL A 199x199

## Spannpaletten Clamping Pallets

| Type          | Ident.-Nr. | Werkstoff   | Masse |
|---------------|------------|-------------|-------|
| Type          | Id.-No.    | Material    | Mass  |
| PAL S 199x199 | 470 009    | Stahl/Steel | 7 kg  |
| PAL A 199x199 | 470 011    | Aluminium   | 3 kg  |



### 3D-Ansicht 3D-View



### Anwendung:

Spannpaletten aus unterschiedlichen Werkstoffen (Stahl, Aluminium), zur Befestigung von Werkstückspannmitteln – um schnell und positionsgenau umzurüsten.

### Application:

Clamping pallets made of different materials (steel, aluminium), for fastening of workpiece clamping devices - for a quick positioned retrofitting.

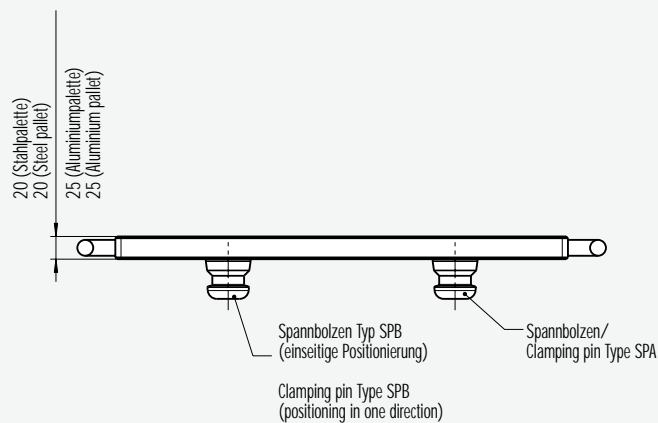
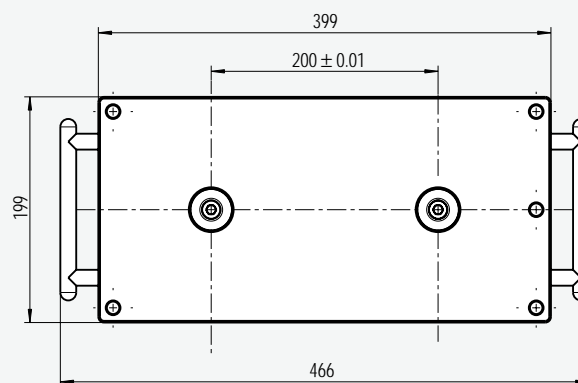
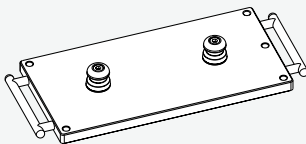
# PAL S 399 x 199 / PAL A 399 x 199

## Spannpaletten Clamping Pallets

| Type            | Ident.-Nr. | Werkstoff     | Masse |
|-----------------|------------|---------------|-------|
| Type            | Id.-No.    | Material      | Mass  |
| PAL S 399 x 199 | 470 010    | Stahl / Steel | 14 kg |
| PAL A 399 x 199 | 470 012    | Aluminium     | 6 kg  |



### 3D-Ansicht 3D-View



### Anwendung:

Spannpaletten aus unterschiedlichen Werkstoffen (Stahl, Aluminium), zur Befestigung von Werkstückspannmitteln – um schnell und positionsgenau umzurüsten.

### Application:

Clamping pallets made of different materials (steel, aluminium), for fastening of workpiece clamping devices - for a quick positioned retrofitting.

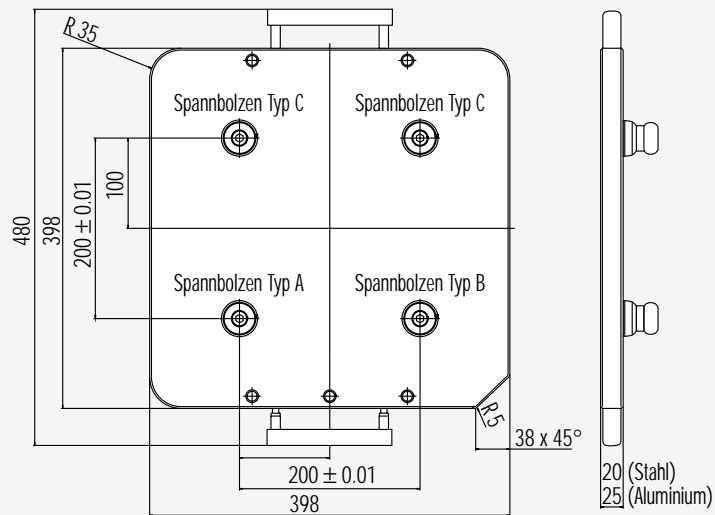
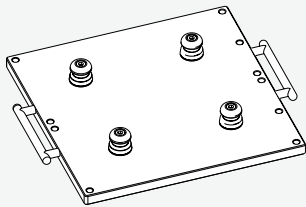
# PAL S 399 x 399/PAL A 399 x 399

## Spannpaletten Clamping Pallets



| Type          | Ident.-Nr. | Werkstoff   | Masse |
|---------------|------------|-------------|-------|
| Type          | Id.-No.    | Material    | Mass  |
| PAL S 199x199 | 470 049    | Stahl/Steel | 28 kg |
| PAL A 199x199 | 470 050    | Aluminium   | 12 kg |

### 3D-Ansicht 3D-View



### Anwendung:

Spannpaletten aus unterschiedlichen Werkstoffen (Stahl, Aluminium), zur Befestigung von Werkstückspannmitteln – um schnell, positionsgenau umzurüsten.

### Application:

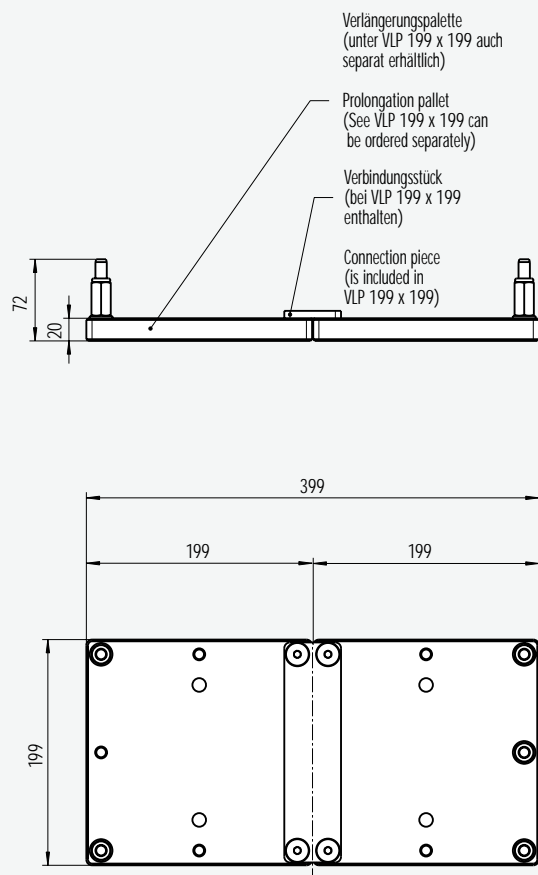
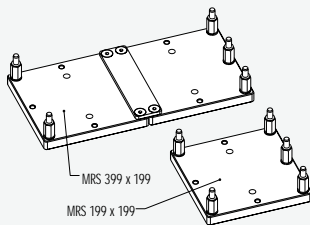
Clamping pallets made of different materials (steel, aluminium), for fastening of workpiece clamping devices - for a quick positioned retrofitting.

## Montage- und Rüststation Assembly and Retrofit Station



| Type          | Ident.-Nr. | Werkstoff     | Masse  |
|---------------|------------|---------------|--------|
| Type          | Id.-No.    | Material      | Mass   |
| MRS 199 x 199 | 470 014    | Stahl / Steel | 6.5 kg |
| MRS 399 x 199 | 470 015    | Stahl / Steel | 8 kg   |
| VLP 399 x 199 | 470 016    | Stahl / Steel | 4 kg   |

### 3D-Ansicht 3D-View



### Anwendung:

Montage-, Rüst- und Reinigungsstation für lagerichtige Ablage der Spannpaletten auf dem Rüstplatz.

### Application:

Assembly-, retrofitting- and cleaning station for correctly positioned storage of the clamping pallets at the retrofitting area.

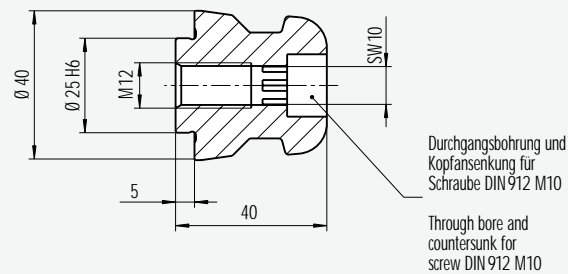
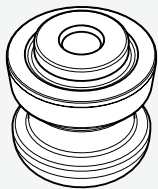
# SPA 40/SPB 40/SPC 40

## Spannbolzen Clamping Pin



| Type   | Ident.-Nr. | Werkstoff   | Masse  | Ausführung  |
|--------|------------|-------------|--------|---|
| Type   | Id.-No.    | Material    | Mass   | Design  |
| SPA 40 | 470 005    | Stahl/Steel | 0.3 kg | Vollbolzen, Standard/Standard   |
| SPB 40 | 470 006    | Stahl/Steel | 0.3 kg | Schwertbolzen, einseitige Positionierung/<br>Positioning in one direction |
| SPC 40 | 470 007    | Stahl/Steel | 0.3 kg | Haltebolzen, mit Zentrierspiel 0.1 mm /<br>w. scope f. centering 0.1 mm   |

### 3D-Ansicht 3D-View

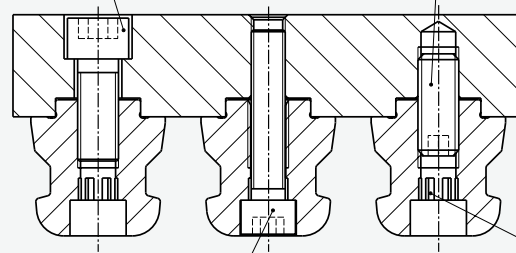


### Befestigungsvarianten Fastening possibilities

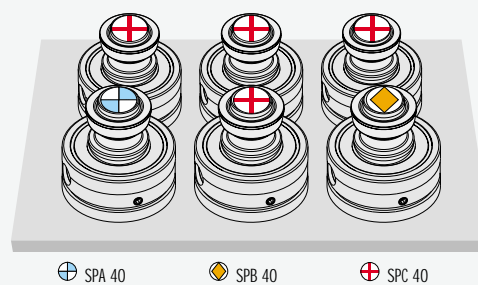
Schraube/Screw  
DIN 912 12.9 M12

Gewindestift/Set-screw  
DIN 913 H46 M12\*

\* nicht für SPB 40  
\* not for SPB 40



### Mehrfachspannplatte/ Multiple clamping baseplate



### Anwendung:

Am Beispiel einer Mehrfachspannpalette (Beachte Skizze).

### Application:

Example of use on a multiple clamping pallet (Please consider the sketch)

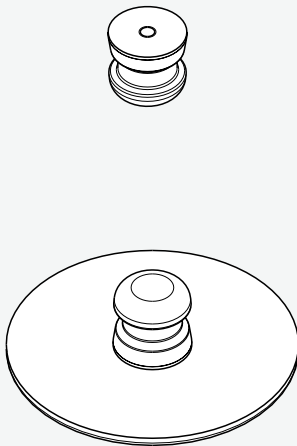
# SDE 40/SDE 120/SDE 138/SDE 164

## Schutzabdeckung Protection Cover

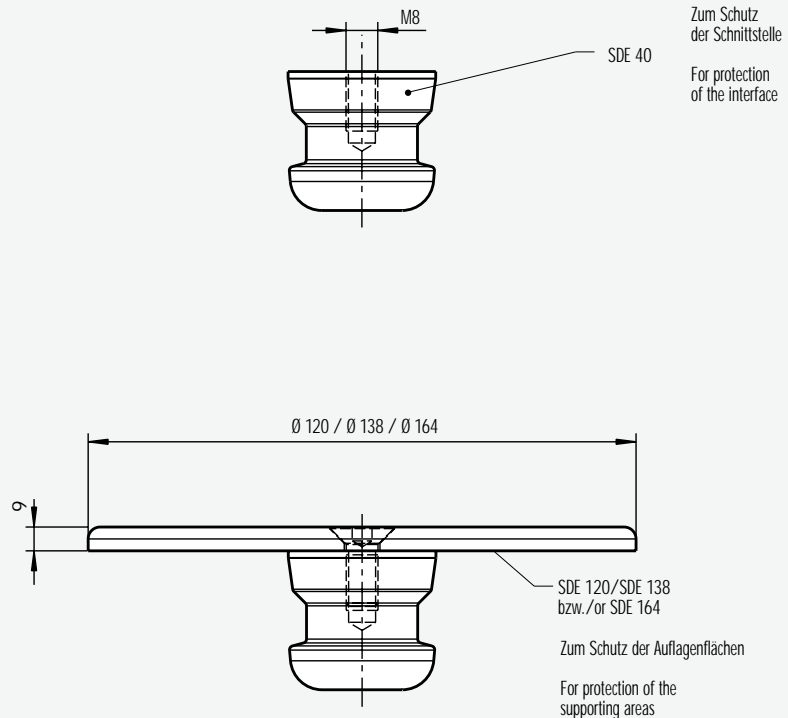


| Type        | Ident.-Nr. | Werkstoff | Masse   | Ausführung passend für                               |
|-------------|------------|-----------|---------|--|
| Type        | Id.-No.    | Material  | Mass    | Design suitable for                                  |
| SDE 40/1 *  | 470 017    | Aluminium | 0.14 kg | NSE 120, NSH 120, NSE 138, NSM 170, NSD 200, NSL 200 |
| SDE 40/4 ** | 470 022    | Aluminium | 0.60 kg | NSE 120, NSH 120, NSE 138, NSM 170, NSD 200, NSL 200 |
| SDE 120     | 470 033    | Aluminium | 0.45 kg | NSE 120, NSH 120                                     |
| SDE 138     | 470 018    | Aluminium | 0.60 kg | NSE 138, NSD 200, NSL 200                            |
| SDE 164     | 470 019    | Aluminium | 0.70 kg | NSM 170  |

### 3D-Ansicht 3D-View



\* 1 Stück / 1 piece  
\*\* Sätze je 4 Stück / set of 4



### Anwendung:

Schutzabdeckungen zum Schutz der Schnittstellen der einzelnen Module.

### Application:

Covers for protection of the interfaces of the individual modules.

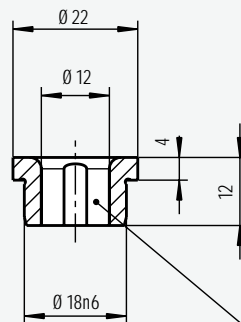
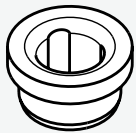
# ZKA 12

## Zentrierkalottenbüchse Dome-shaped Centering Bushing



| Type   | Ident.-Nr. | Werkstoff   | Masse   | Ausführung passend für |
|--------|------------|-------------|---------|------------------------|
| Type   | Id.-No.    | Material    | Mass    | Design suitable for    |
| ZKA 12 | 470 008    | Stahl/Steel | 0.06 kg | NSD 200                |

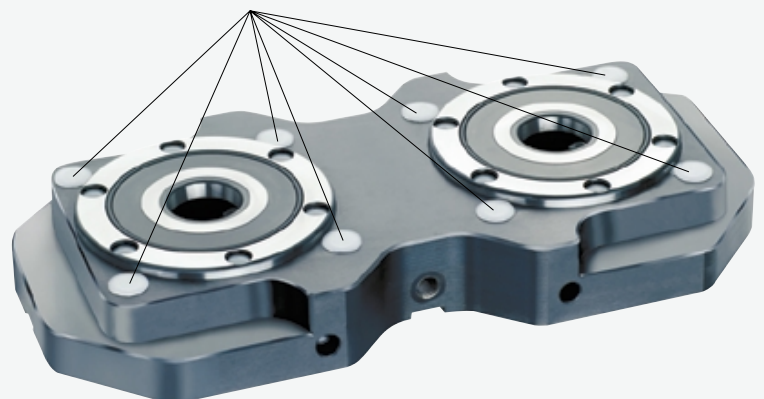
### 3D-Ansicht 3D-View



Kontaktfläche für  
Indexierstift –  
ausgerichtet radial  
zur Mitte

Contact surface  
for indexed pin,  
adapt to the  
middle position

Montagemöglichkeiten/Assembly possibilities (8x)



### Anwendung:

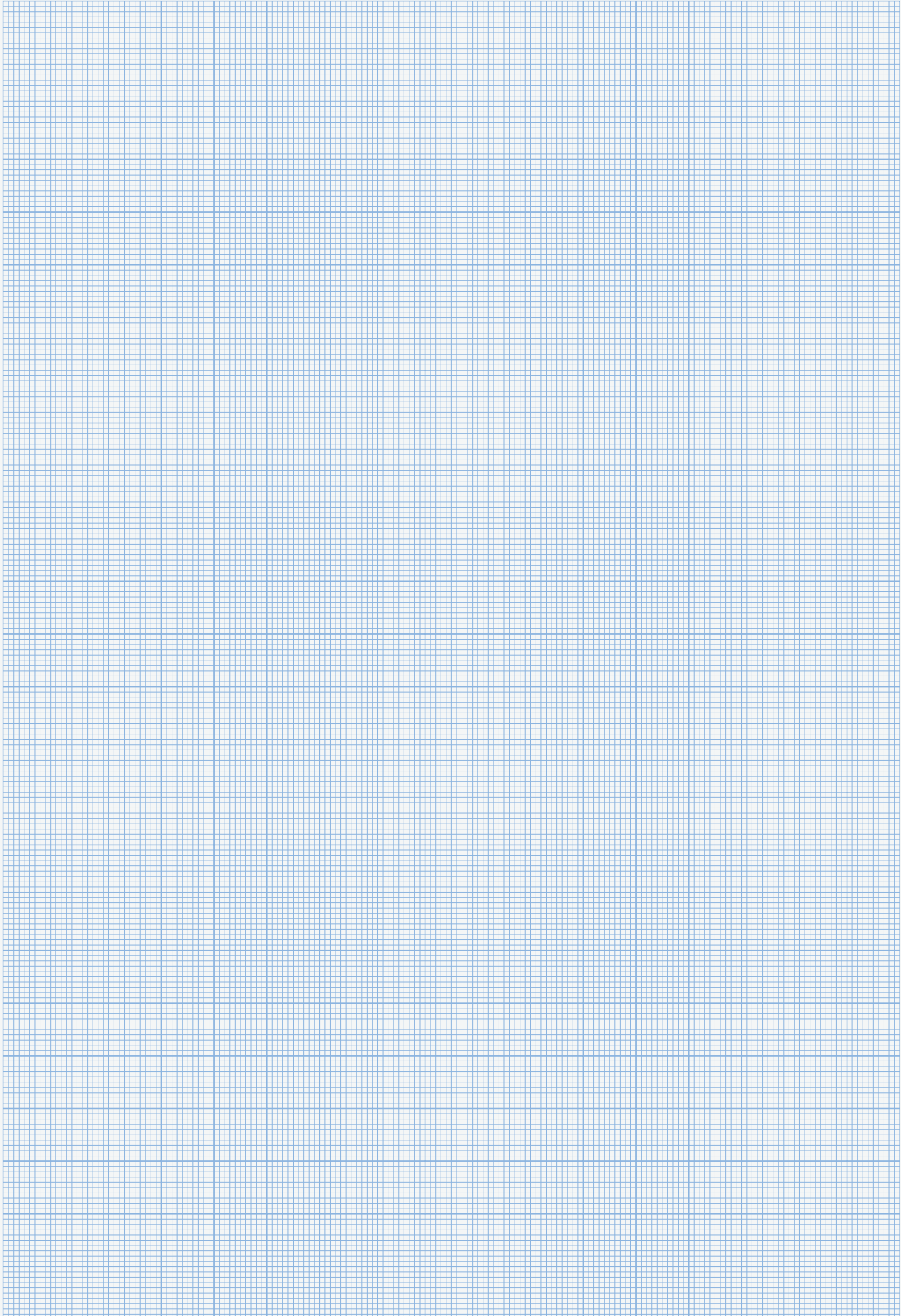
Zentrierkalottenbüchse zur radialen Positionierung von Einzelpaletten auf dem Spannmodul Type NSD 200 und NSD 150.

### Application:

Dome-shaped centering bushing for radial positioning of the single pallets onto the clamping module Type NSD 200 and NSD 150.

Notizen

Notes



# SCHUNK UNILOCK

## Kundenspezifische Anwendungen / Customer's application

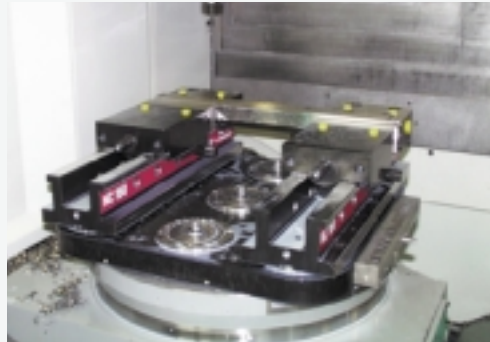
Kundenspezifische Grundplatte mit 9 Stück Einbauspannmodule, Type NSE 138. Alle Module sind über eine Ventilleiste einzeln oder getrennt voneinander schaltbar.

**Darstellung:**  
2 Stück Schraubstöcke Größe 160

**Befestigung:**  
mit 3 Stück Spannbolzen Type SPA, SPB, SPC

**Mittlere Ansicht:**  
3 Stück Spannmodule sind nicht im Einsatz und werden mit der Schutzabdeckung Type SDE 40 geschützt.

Photo 1



Special base plate with 9 pieces of assembly modules, Type NSE 138. Every module can be actuated separately or together via aligned valves.

**Illustration:**  
2 pieces vises size 160

**Fastening:**  
with 3 pieces clamping pins Type SPA, SPB, SPC.

**Middle:**  
3 pieces of clamping modules - presently out of operation - are protected by (protection) covers Type SDE 40.

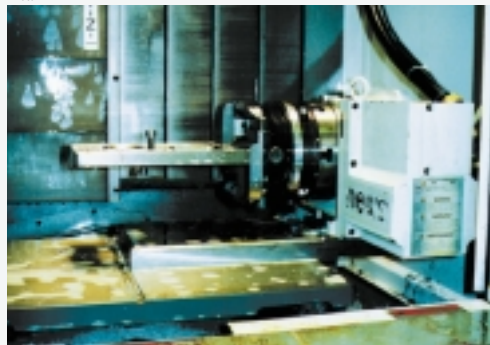
Kundenspezifische Sonderspannvorrichtung befestigt mit einem Mono-Spannmodul Type NSM 170.

**Darstellung:**  
2-fach Spannvorrichtung

**Befestigung:**  
über eine Adapterplatte zwischen Teilapparat und NSM 170, mit radialer Verdrehsicherung über einen Zylinderstift. Die gesamte Spannvorrichtung wird über einen Spannbolzen gehalten.

**Maße und Gewichte:**  
Länge = 200 mm, Masse = 10 kg

Photo 2



Special clamping device fastened by a Mono Clamping Module Type NSM 170.

**Illustration:**  
2fold clamping device

**Fastening:**  
via an adapter plate between the dividing attachment and NSM 170, with radial anti-twist safety device via cylinder pins. The complete clamping device is held by one clamping pin.

**Dimensions and weights:**  
length = 200 mm, mass = 10 kg

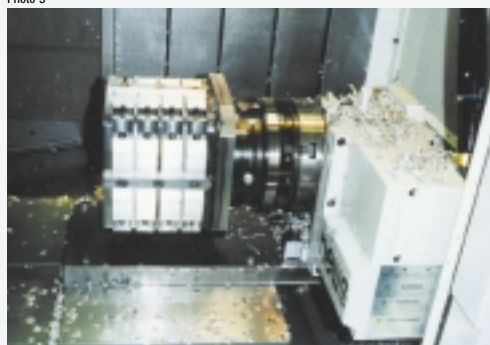
Kundenspezifische Sonderspannvorrichtung befestigt mit einem Mono-Spannmodul Type NSM 170.

**Darstellung:**  
32-fach Spannvorrichtung

**Befestigung:**  
über eine Adapterplatte zwischen Teilapparat und NSM 170, mit radialer Verdrehsicherung über einen Zylinderstift. Die gesamte Spannvorrichtung wird über einen Spannbolzen gehalten.

**Maße und Gewichte:**  
Länge = 250 mm, Masse = 16 kg

Photo 3



Special clamping device fastened by a Mono Clamping Module Type NSM 170

**Illustration:**  
32fold clamping device

**Fastening:**  
via an adaptor plate between the dividing attachment and NSM 170, with radial anti-twist safety device via cylinder pins. The complete clamping device is held by one clamping pin.

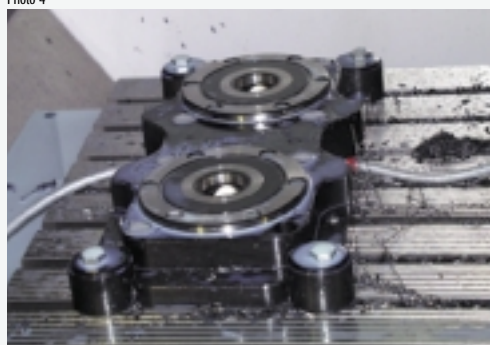
**Dimensions and weights:**  
length = 250 mm, mass = 16 kg

Doppelt-Spannstation Type NSD 200 befestigt auf einem starren HERMLE-Maschinentisch zum flexiblen und schnellen wechseln von Spannvorrichtungen.

**Darstellung:**  
Standard-Spannstation Type NSD 200 mit radialer Positioniermöglichkeit über Teilungskalotte.

**Befestigung:**  
mit Bridenrohlinge - die im Lieferumfang der NSD 200 enthalten sind.

Photo 4



Double module for stationary use Type NSD 200 fastened on a fixed HERMLE machine table for a versatile and quick change of clamping devices.

**Illustration:**  
Standard clamping module Type NSD 200 with a radial positioning possibility via a dome-shaped dividing attachment.

**Fastening:**  
with blanks of clamping pins - which are comprised in the delivery of the NSD 200.

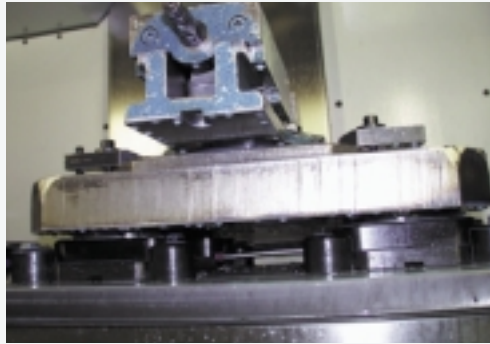
# SCHUNK UNILOCK

## Kundenspezifische Anwendungen / Customer's application

Kundenspezifische Sonderspannplatte mit einem manuellen Schraubstock, aufgebaut auf einem HERMLE-Maschinentisch, befestigt auf 2 Stück Doppel-Spannstation Type NSD 200.

**Maße und Gewichte:**  
Stahlplatte 400 x 400 x 30 mm,  
Masse = 38 kg

Photo 5



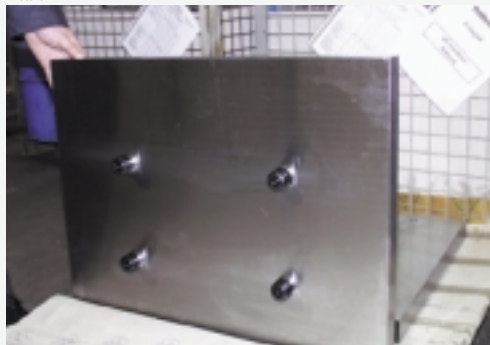
Special clamping plate with a manual vise, mounted onto a HERMLE machine table, fastened onto 2 pieces double modules for stationary use Type NSD 200.

**Dimensions and weights:**  
steel plate 400 x 400 x 30 mm,  
mass = 38 kg

Kundenspezifische Sonderspannvorrichtung mit 4 Stück Spannbolzen (1 Stück Type SPA, 1 Stück SPB und 2 Stück SPC)

**Maße und Gewichte:**  
Stahlplatte 600 x 400 x 30 mm,  
Masse = 56 kg

Photo 6



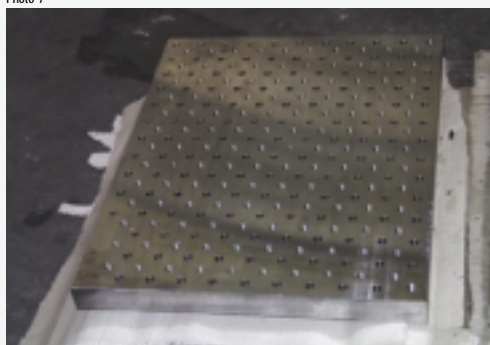
Special clamping device with 4 pieces clamping pins (1 piece Type SPA, 1 piece SPB and 2 pieces SPC)

**Dimensions and weights:**  
steel plate 600 x 400 x 30 mm,  
mass = 56 kg

Rasterspannplatte mit integrierten Spannbolzen zum schnellen umrüsten.

**Maße und Gewichte:**  
Stahlplatte 600 x 400 x 30 mm,  
Masse = 56 kg

Photo 7



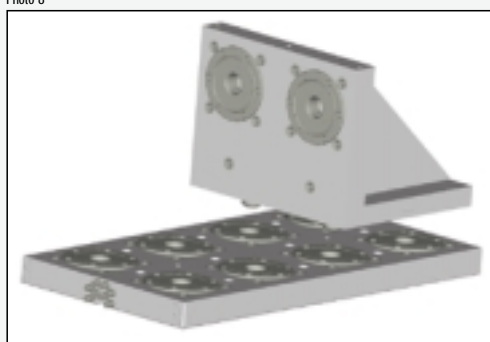
Grid-type clamping plates with integrated clamping pins for quick changes

**Dimensions and weights:**  
steel plate 600 x 400 x 30 mm,  
mass = 56 kg

Kundenspezifische Spannplatte mit 8-fach Einbauspannmodule und dazugehörigem Sonderspannwinkel mit 2 Spannstellen. Einsatz für horizontale und vertikale Bearbeitung auf Werkzeugmaschinen durch flexibles umrüsten.

**Maße und Gewichte:**  
Spannplatte:  
800 x 400 x 55 mm, ca. 116 kg  
Spannwinkel:  
380 x 340 x 300 mm, ca. 90 kg

Photo 8



Special clamping plate with 8fold assembly modules and matching special clamping angle with 2 clamping areas. To be used for horizontal and vertical machining on tooling machines due to quick changes.

**Dimensions and weights:**  
Baseplate:  
800 x 400 x 55 mm, ca. 116 kg  
Angle clamping system:  
380 x 340 x 300 mm, ca. 90 kg